

ABSTRACT BOOK



ONLINE
CONFERENCE

— THE 2020 TO 2030 —
SOCIAL WORK GLOBAL AGENDA
CO-BUILDING SOCIAL TRANSFORMATION

15 - 19
JULY 2020

Dear conference participants,

Thank you for joining this global discussion that will develop themes and strategies for the social work profession for the next ten years. There are more than 15'000 people who have registered for this conference. This is an indication of the commitment of social workers and others to work together to strengthen impact of the profession in advancing the rights of people and environments.

We are delighted that we have many exciting keynotes and presentations that will support us in our mission. The keynotes include political leaders that are pioneering change in their own countries and beyond, people with lived experience in care, the United Nations and social work leaders from Africa, Asia-Pacific, Europe, Latin America and the Caribbean, the Middle East and North America. The presentations come from practice settings from throughout the world, reflecting on issues that are at the heart of social work and the communities in which we practice.

The conference has key partners: The United Nations Institute of Research in Social Development, The Global Social Service Workforce Alliance and the Social Work Action Network. Each of these partners, along with IFSW, is committed to Co-building the Global Social Work Agenda and the profession's aim of a socially just, sustainable world, where everyone's strengths are recognised, and their dignity respected.

I want to thank all of the conference participants for your willingness to be a part of setting this journey, the conference partners, presenters, the programme committee and the IFSW family (the Federation's executive, volunteers and members) who have unflinchingly supported this conference to take place. A further special thanks to Lola Casal and Pascal Rudin from the IFSW Secretariat, who learnt only a few weeks ago that they would have to build and organise an online conference after the cancellation of the Calgary event due to COVID-19. They have performed a miracle.

I end by wishing you all an enjoyable experience in what has become the largest ever international social work conference.

RORY TRUELL
CONFERENCE CHAIRPERSON



WELCOME IFSW PRESIDENT SILVANA MARTÍNEZ

 [WATCH HERE](#)

Dear social workers, educators, students, users of social services and political leaders from all over the world: The great day has finally arrived!!

As World President of the International Federation of Social Workers I am very excited and proud to welcome you to our First ever Global Online Conference on Social Work. This event organized by our Federation is entitled The Global Social Work Agenda 2020-2030: Co-Building Social Transformation. Our event runs from 15 - 19 July 2020.

I would like to take this opportunity to express my most sincere and deep thanks to the Secretary General of the IFSW Dr. Rory Truell,. Thanks also to the entire team of the Secretariat, especially to Pascal Rudin and Lola Casal-Sánchez. They have made possible the dream of holding our Conference through this virtual Platform.

I also want to thank the members of the IFSW Global Executive, Commissioners, panel coordinators, volunteers, translators, abstract reviewers of the presentations and all members of our Federation. All have worked with much passion and commitment in the organization of this Conference. Two days ago our General Assembly ended, so I also welcome the new members of the Global Executives.

I also want to thank the President of the International Association of Schools of Social Work, Dr. Anna María Campanini, for joining this event. Also thanks to the members of the Social Work Action Network (SWAN), and to the speakers of the five Regions that make up our Federation. Of course also thanks to all who signed up to participate in this wonderful Conference.

In particular, I want to thank Drs. David Jones and Abye Tasse for the enormous task carried out and the ongoing commitment in coordinating the Global Agenda for Social Work and Social Development. Also for the joint work carried out between our Federation, the International Association of Schools of Social Work and the International Council of Social Welfare.

I would also like to highlight here the work and dedication of Dr. Rory Truell and Rose Henderson, for taking on the challenge of representing our Federation in this working group.

Finally, I want to deeply thank, in a very special way, the Keynote Speakers who, as Social Workers and Political Leaders from different parts of the world, honor us with their presence at this event. I have no doubt that their dissertations will deepen our reflections on the importance and potential of Social Work and the challenges the profession has in the present and the future, a future that is , of course, increasingly complex and uncertain.

Thank you so much Dr. John Swinney, Dr. Angelo McClain, Dr. Paul Ladd, Dr. Victor Paul, Dr. Haneen Magadlah, and Dr. Alicia Kirchner. Thank you all for agreeing to share experiences and knowledge with us. It will be a great pleasure to hear from you all. We are facing a great historical event for our Federation and the Social Workers of the World: This is the first free online global conference of the International Federation of Social Workers.



This political decision of our Federation has allowed the participation of more than 15000 social workers from all over the world. This both moves me deeply and fills me with pride.

But we are also facing another great event for our Federation and the Social Workers of the World: The debate on our Global Agenda for Social Work and Social Development for the period 2020-2030. Specifically this Conference is the greatest opportunity to discuss and contribute to the future of our profession, sharing ideas, opinions, feelings and experiences.

This Conference takes place in a very special context since we are experiencing an unprecedented crisis worldwide, generated by the COVID-19 pandemic. This undoubtedly affects us all and has and will surely have enormous social, economic, health, cultural and political consequences.

But we are Social Workers and we are used to facing crisis and adverse situations, problematic situations, social inequalities, scarcity of resources, violation of rights. Crises do not paralyze us. Nothing stops Social Workers when it comes to saving lives, defending rights and fighting for better living conditions for our peoples. As Social Workers, even in crisis contexts, we see opportunities.

In this sense, I want to highlight especially the enormous work that Social Workers have been undertaking around the world. We are a front line profession. We are professionals of daily life. No one can teach us what we see and experience every day in our professional practices, because we are on the front line every day. We work where the crisis directly impacts and where the social needs and the suffering of the people in our communities is the most profound. Social workers place themselves, their convictions, the commitment and the theoretical-methodological tools with which they work into our profession.



We have never hidden or escaped from social problems. On the contrary, in this pandemic Social Work was one of the first professions to face the crisis, many acting independently long before many governments in the face of their inaction. The professional Social Work organizations and their leaders were and are protagonists, together with the peoples and communities, of collective actions from which they were quickly organized and mobilised to face the crisis.

I want to tell you that I am very proud of the work that you have been doing, because with each of your actions you are saving lives, despite often risking your own lives. Many colleagues have died in this pandemic and on behalf of the International Federation of Social Workers I want to express my condolences to the friends and relatives of the deceased colleagues. Our tribute and recognition to them.

As Boaventura de Souza Santos points out, this virus has become a great pedagogue for humanity. He came to show us the irreplaceable place and the importance of the State, Public Policies and Social Protection Systems for all citizens. He came to show us that Neoliberalism and its recipes for austerity and cuts in Social Services only served to deepen social inequalities, condemning millions of human beings to hunger, misery, unemployment, exploitation and death.

He came to remind us that no one is saved alone ... That strategies and approaches always require a holistic, collective and solidary approach between communities, organizations and social movements, with a present State and strong social commitment.

In this regard, Social Work has been demonstrating the enormous importance of solidarity throughout the world, as a fundamental ethical-political value, as a commitment to life and as a banner of struggle.

We are not only a profession of the first line, but also a profession of solidarity, understood as Social Justice and unrestricted defence of Human Rights and Democratic Life. For Social Work, nothing human is indifferent.

We cannot think of any social intervention without thinking of the other, of the others, along with others. In Social Work we always think and act collectively, strengthening social ties, weaving hopes and organizing resistance and struggle. As I always say, social conquests are never products of individual actions but of collective struggles.

It is important to emphasize here, in this world event, that without social justice solidarity is not possible, because there is no solidarity without first thinking about the fair distribution of wealth and the recognition and respect for differences. And for this to be possible, we need to transform reality. We need to create the historical conditions for the real and effective exercise of citizenship.

This is the great driver that mobilizes us every day. This is our horizon of meaning. This is Social Work. This is what moves us to seek, with others, every day, the transformation of the current social order.

From our Federation we hope that you have four wonderful days, of exchanges, of shared learning, of strengthening ties, of debates and experiences. These experiences will surely remain forever in our memories and our hearts.

I am very honored and happy, as the Global President of the International Federation of Social Workers, to welcome you to this historic event for World Social Work, the First Global Online Conference on Social Work.

Thank you very much!!!

DRA. SILVANA MARTÍNEZ
GLOBAL PRESIDENT, IFSW

Available languages: English | Spanish



AIMS OF THE CONFERENCE

 [WATCH HERE](#)

Welcome to the IFSW online world conference

It is such a pleasure to have you with us over the next few days.

The aims of this conference were built on a vision. A vision of inclusion and active participation with people from all over the world as we develop the Global Agenda for Social Work for the next 10 years.

To help us in this task, we have more than 300 abstracts submitted for video presentations from countries across the world. We have high-level keynote addresses from the Middle East, Africa, North America, Europe, Latin America and Asia-Pacific. We have politicians that are leading change in their own countries, we have civil society leaders and community leaders that are leading change from the ground up and of course we have many many social workers - all working together, to find a way to position the social work profession to meet the demands of the future and make an impact for a more socially just and inclusive world.



In this conference there are many opportunities for everyone to participate whether you are a presenter or a conference participant. We have daily sessions where there are live panels - where your comments will be read by others, and you can address the panel members – ask them questions and make your observations and suggestions. In addition, every day we have an Open Mike forum where we welcome your thoughts – and your thoughts are as important as anybody else's.

We all have to put our best thinking forward, because we need to examine how to develop the best social work strategies over the next 10 years.

So, this is an exciting time and also a time of responsibility for us all. I hope you enjoy meeting this challenge, I know I will, and I will enjoy hearing your contributions.

All of us in IFSW look forward to interacting with you over the coming days.

Thank you so much for your commitment, thank you so much for your time and thank you so much for sharing your wisdom. My best wishes and see you in the conference sessions.

RORY TRUELL
IFSW SECRETARY-GENERAL

Available languages: English | Spanish



WELCOME FROM THE CONFERENCE PROGRAMME COMMITTEE

 [WATCH HERE](#)

It is our pleasure to have people practicing in social work, social work education and partners to social work participating in the IFSW Online Global Conference: 2020 – 2030 Social Work Global Agenda: Co-Building Social Transformation.

We have arranged the conference programme to meet the conference aims – a global discussion that will develop the Global Social Work Agenda themes for the coming ten years. The programme has been arranged into 14 subthemes that are all important to Global Social Work Agenda: 2020-30.

The presentations in the programme were originally abstracts accepted for the IFSW Social Work Social Development Conference, Calgary, and following the cancelation of that event, the presenters have elected to share their work in this online forum. We have received almost 300 video presentations. In the program, you'll find different ways of sharing and opportunities to contribute whether you are presenter or participant. This includes: live panels on the Global Agenda, Indigenous-led sessions, workshops, services-users (experts by experience) led sessions, opportunities to meet with social work authors, as well as 30 & 60 minute presentations. All of these aim to bring new perspectives and wisdoms to the social work profession as it looks forward. We invite you to leave your contributions in the comments boxes of each presentation.

We are also pleased to announce that during #IFSW2020conference we will launch the Report on The Global Agenda of Social Work and Social Development 2018 – 2020 as well as the results of the two IFSW research projects: The ethical challenges facing social workers during COVID-19, and A Global Study on The Working Conditions of Social Workers.

Never before has a Conference on Social Work counted with so many renowned social workers, global political and civil society and community leaders, representatives of people that use social services, educators and researchers.

The keynote list includes: Esther Utjua Muinjangu, Social Worker and Deputy Minister of Health and Social Services in Namibia; Alicia Kirchner, Social Worker and Governor of the Argentinian province of Santa Cruz; or Wanda Thomas Bernard, Social Worker and Canadian Senator; John Swinney, Deputy First Minister of Scotland and Cabinet Secretary for Education and Skills; Paul Ladd, Director of UNRISD; Angelo McClain, social workers and CEO National Association of Social Worker in USA; Who Care's? Scotland an organisation representing people in care, Amy Bess, Senior Advisor at the Global Social Service Workforce Alliance; Dimitra-Dora Teloni, Member of the Social Work Action Network (SWAN) Dr. Victor Paul, social worker and Head of the Department of Social Work & Sociology at CHRIST University, Bangalor; and Haneen Magadlah, social worker, educator and social activist.

We wish everyone participating in the historic conference a very enjoyable experience in contributing to the future of the social work profession.

CONFERENCE COMMITTEE



SILVANA MARTINEZ



RORY TRUELL



LINDA KREITZER



JAN CHRISTIANSON-WOOD



LARRY ALICEA RODRÍGUEZ



LOLA CASAL-SÁNCHEZ



PASCAL RUDIN





THE GLOBAL AGENDA FOR SOCIAL WORK AND SOCIAL DEVELOPMENT: 2020 – 2030.

MESSAGE FROM IFSW TASKFORCE.

 [WATCH HERE](#)

A very warm welcome to this part of the IFSW online world conference.

The Global Agenda for Social Work and Social Development is not new. It was launched 10 years ago by IFSW and our partners The International Association of Schools of Social Work and The International Council on Social Welfare. In 2010 we jointly set four themes for the years spanning from 2010 to 2020. These were 'Promoting Social and Economic Equality', 'Promoting the Dignity and Worth of all Peoples', 'Promoting Community and Environmental Sustainability' and 'Promoting the Importance of Human Relationships'.

Over those ten years the social work profession grew significantly as social workers in all parts of the world identified with those themes and wanted to be a part of a profession that was moving forward and taking action. As a result of IFSW's promotion of the themes, World Social Work Day grew to become a major event in many countries, our annual posters were spontaneously translated into more than 70

languages, we won recognition from many governments and UN agencies and the profession globally gained an unparalleled confidence. And now we need to set a new dynamic set of themes that will assist the profession to further increase its impact in supporting families, communities, societies and the world to recognise everyone's value, contributions and their right to live securely, with certainty and with a positive future.

We all know that our task is ambitious, that is why this conference is called The Social Work Global Agenda: Co-building Social Transformation. In this conference we are advancing stronger and more partnerships with likeminded organisations and we are recognising the importance of the social work role in supporting the ground-up movement of people and communities seeking their aspirations for inclusive positive social change.

Along with all of you who are attending this conference, IFSW and its longstanding Global Agenda partners, The International Association of Schools of Social Work and The International Council on Social Welfare together with our new partners, The Social Services Workforce Alliance, The United Nations Institute for Research in Social Development and The Social Work Action Network are all contributing to co-building the new Global Agenda for the Social Work profession.

Our longstanding partners have considered that in the context of COVID-19 their consultations and development will be run over two steps – setting the first theme for 2020 to 2022 and before the end of 2021 setting the remaining themes for the decade. This approach takes into consideration that the world is rapidly changing and an agenda set today may be different from the needs of the next years. In this conference however, we want to look at a framework of themes from the start and not themes in isolation. Themes, for example that speak to the need to build global solidarity, themes that promote shared values across communities, societies and the world...



Themes that enable people to live together with shared futures and themes that promote all people's involvement in decisions that affect their lives. These ideas are just a starting point and we welcome your ideas of new Global Agenda themes that will maximise the impact of the social work profession for the next 10 years. You will find other starting point ideas to stimulate your thinking and give you something to react in in the links below this video. So we end this introduction to our joint tasks during this conference by saying that all of your comments, as presenters and participants, will be heard by an overview committee comprising our longstanding and new partners as well as the IFSW global executive. The job of this committee during the conference is to take your ideas and turn them into a framework that will build on our past gains and further build the social work profession's strength, position and impact. At the conclusion of the conference, Rory and I will present back to you the findings that this conference has established.

Before we finish we also want to say special thanks to David Jones as during this conference he steps down from his role as the Global Agenda Coordinator. David was there from the beginning of the Global Agenda strategy and as a result of his and other's work the social work profession is now stronger, more visible and more confident and is also in an excellent place to launch the next 10 year strategy. Thank you David, and also thank you to all of the participants in this conference for your commitment to this important process. We are both looking forward to interacting with you during this historic and innovative event.

Thank you so much.
RORY TRUELL
IFSW SECRETARY-GENERAL

ROSE HENDERSON
IFSW ASIA - PACIFIC PRESIDENT



PROGRAM

UTC	JULY 15	JULY 16	JULY 17	JULY 18	JULY 19
8:00 - 8:30	WELCOME & OPENING CEREMONY AIMS OF THE CONFERENCE	30 MINUTE PRESENTATIONS	GLOBAL AGENDA IFSW ASIA PACIFIC LIVE PANEL	30 MINUTE PRESENTATIONS	30 MINUTES PRESENTATIONS
8:30 - 9:00	30 MINUTE PRESENTATIONS	30 MINUTE PRESENTATIONS		30 MINUTE PRESENTATIONS	30 MINUTE PRESENTATIONS
9:00 - 9:30	10 MINUTE TALK PRESENTATIONS	10 MINUTE TALK PRESENTATIONS	KEYNOTE SPEAKERS HANEEN MAGADLAH Social Worker - Educator, activist, works on developing volunteerism in the Palestinian community	10 MINUTE TALK PRESENTATIONS	10 MINUTE TALK PRESENTATIONS
9:30 - 10:00	KEYNOTE SPEAKERS ESTHER UTJUA MUNJANGUE Social Worker, Deputy Minister of Health and Social Services in Namibia	KEYNOTE SPEAKERS PAUL LADD Director of United Nations Research Institute for Social Development		KEYNOTE SPEAKERS VICTOR PAUL Social Worker, Head of the Department of Social Work and Sociology at CHRIST University, India	KEYNOTE SPEAKERS DIMITRA-DORA TELONI Social worker, Representative of Social Work Action Network (SWAN), Assistant Prof. Dep. of Social Work University of West Attica, Greece
10:00 - 10:30	GLOBAL AGENDA IFSW AFRICA LIVE PANEL	10 MINUTE TALK PRESENTATIONS INDIGENOUS-LED CONVERSATION	10 MINUTE TALK PRESENTATIONS SERVICE USER-LED CONVERSATION	10 MINUTE TALK PRESENTATIONS 30 MINUTE PRESENTATIONS	GLOBAL AGENDA IFSW EUROPE LIVE PANEL
10:30 - 11:00		POSTERS PRESENTATIONS	POSTERS PRESENTATIONS	POSTERS PRESENTATIONS	
11:00 - 11:30	IFSW RESEARCH ON SOCIAL WORK WORKING CONDITIONS REPORT	MEET IFSW IFSW Secretariat and IFSW Commissions, IFSW Climatic Justice Program	PRESENTATION GLOBAL AGENDA REPORT 2018 - 2020	IFSW RESEARCH ETHICAL CHALLENGES FOR SOCIAL WORKERS DURING COVID-19 AND BEYOND LIVE SESSION	MEET THE AUTHORS
11:30 - 12:00	10 MINUTE TALK PRESENTATIONS	10 MINUTE TALK PRESENTATIONS	10 MINUTE TALK PRESENTATIONS		10 MINUTE TALK PRESENTATIONS
12:00 - 12:30	WORKSHOP SESSIONS	WORKSHOP SESSIONS	WORKSHOP SESSIONS	WORKSHOP SESSIONS	WORKSHOP SESSIONS
12:30 - 13:00					
13:00 - 13:30	KEYNOTE SPEAKERS AMY BESS Senior Advisor of the Global Social Service Workforce Alliance	KEYNOTE SPEAKERS JOHN SWINNEY Deputy First Minister of Scotland and Cabinet Secretary for Education and Skills	KEYNOTE SPEAKERS ANGELO MCCLAIN Social Worker, CEO of the National Association of Social Worker in USA	KEYNOTE SPEAKERS WHO CARE'S? SCOTLAND National voluntary organisation, working with care experienced young people and care leavers across Scotland.	KEYNOTE SPEAKERS WANDA THOMAS BERNARD Social Worker, Canadian Senator
13:30 - 14:00	30 MINUTE PRESENTATIONS	WORKSHOP SESSIONS	IFSW FRIENDS RECEPTION LIVE SESSION	30 MINUTE PRESENTATIONS	CONFERENCE RESULTS CO-BUILDING SOCIAL TRANSFORMATION, THE NEXT GLOBAL AGENDA
14:00 - 14:30	30 MINUTE PRESENTATIONS			30 MINUTE PRESENTATIONS	CLOSING CEREMONY
14:30 - 15:00					
15:00 - 15:30	KEYNOTE SPEAKERS ALICIA KIRCHNER Social Worker, Governor of the Argentinian province of Santa Cruz LIVE QUESTIONS	GLOBAL AGENDA IFSW LATIN AMERICA & CARIBBEAN LIVE PANEL	PANEL SESSIONS	GLOBAL AGENDA IFSW NORTH AMERICA LIVE PANEL	
15:30 - 16:00					
16:00 - 16:30	30 MINUTE PRESENTATIONS	30 MINUTE PRESENTATIONS	30 MINUTE PRESENTATIONS	30 MINUTE PRESENTATIONS	
16:30 - 17:00					
17:00 - 17:30	GLOBAL AGENDA OPEN MIC LIVE SESSION	GLOBAL AGENDA OPEN MIC LIVE SESSION	GLOBAL AGENDA OPEN MIC LIVE SESSION	GLOBAL AGENDA OPEN MIC LIVE SESSION	
17:30 - 18:00					



THE CONFERENCE IN NUMBERS

15.000 PARTICIPANTS
11 KEYNOTE SPEAKERS
5 LIVE GLOBAL AGENDA PANELS
4 OPEN MIC SESSIONS

2 SOCIAL WORK RESEARCH REPORT PRESENTATIONS
IFSW FRIEND'S RECEPTION

THE GLOBAL AGENDA 2018 – 2020 REPORT

356 PRESENTERS FROM **56** COUNTRIES
172 **11** AUTHORS
SESSIONS COUNTRIES

14 SUBTHEMES

INDIGENOUS KNOWLEDGE AND RIGHTS

STRENGTHENING COMMUNITIES | **ECONOMIC DEVELOPMENT** | **ENVIRONMENTAL JUSTICE** | **SOCIAL AND HUMAN RIGHTS**

SEXUAL AND GENDER DIVERSITY | DEMOCRACY | SOCIAL MOVEMENTS

MIGRATION AND DISPLACED PERSONS | SOCIAL PROTECTION SYSTEMS

PEACE BUILDING | EDUCATION, RESEARCH AND PRACTICE

10 TYPES OF PRESENTATIONS

GLOBAL LIVE PANEL | WORKSHOPS | KEYNOTE SPEAKERS

10 MINUTE PRESENTATIONS | PANEL SESSION | POSTERS

RESEARCH REPORT PRESENTATIONS | OPEN MIC | 30 MINUTE PRESENTATIONS

KEYNOTE SPEAKERS



ESTHER UTJUA MUINJANGUE

SOCIAL WORKER, DEPUTY MINISTER OF HEALTH AND SOCIAL SERVICES IN NAMIBIA

"OPENING KEYNOTE ADDRESS"

[WATCH HERE](#) Available languages: English | Spanish | Russian



ALICIA KIRCHNER

SOCIAL WORKER, GOVERNOR OF THE ARGENTINIAN PROVINCE OF SANTA CRUZ

"THE DECONSTRUCTION OF SOCIAL RECONSTRUCTION"

"LA DECONSTRUCCIÓN DE LA RECONCEPTUALIZACIÓN DEL TRABAJO SOCIAL"

[WATCH HERE](#) [LIVE QUESTION SESSION](#) Available languages: English | Spanish | Russian



WANDA THOMAS BERNARD

SOCIAL WORKER, CANADIAN SENATOR

"DEALING WITH RACISM:

LESSONS LEARNED FROM BECAUSE WE MATTER"

[WATCH HERE](#) Available languages: English | Russian



JOHN RAMSAY SWINNEY

DEPUTY FIRST MINISTER OF SCOTLAND AND CABINET SECRETARY FOR EDUCATION AND SKILLS

"SUPPORTING SCOTLAND'S YOUNG PEOPLE

TO GROW UP FEELING LOVED, SAFE AND RESPECTED – THE PROMISE"

[WATCH HERE](#) Available languages: English | Russian



PAUL LADD

DIRECTOR OF UNITED NATIONS RESEARCH INSTITUTE FOR SOCIAL DEVELOPMENT

"SOCIAL WORK IN THE NEXT DECADE:

CHALLENGES AND OPPORTUNITIES"

[WATCH HERE](#) Available languages: English | Russian



ANGELO MCCLAIN

SOCIAL WORKER, CEO OF THE NATIONAL ASSOCIATION OF SOCIAL WORKER IN USA

**"LEADERSHIP AND THE CRITICAL ROLE IN ADVANCING
THE SOCIAL WORK GLOBAL AGENDA"**

[WATCH HERE](#) Available languages: English | Spanish | Russian



WHO CARE'S? SCOTLAND

NATIONAL VOLUNTARY ORGANISATION, WORKING WITH CARE EXPERIENCED YOUNG PEOPLE AND CARE LEAVERS ACROSS SCOTLAND.

"THE HISTORY OF CARE EXPERIENCED PEOPLE IN SOCIETY"

[WATCH HERE](#) Available languages: English | Russian

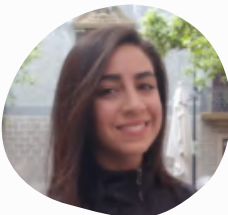


AMY BESS

SENIOR ADVISOR AT THE GLOBAL SOCIAL SERVICE WORKFORCE ALLIANCE

**"SOCIAL SERVICE WORKFORCE STRENGTHENING
OVER THE NEXT TEN YEARS"**

[WATCH HERE](#) Available languages: English | Spanish



HANEEN MAGADLAH

SOCIAL WORKER, AND SOCIAL ACTIVIST, WORKS ON DEVELOPING VOLUNTEERISM IN THE PALESTINIAN COMMUNITY

**"IT TOOK US A PANDEMIC TO UNDERSTAND
HOW ESSENTIAL SOCIAL WORK"**

[WATCH HERE](#) Available languages: English | Russian



VICTOR PAUL

SOCIAL WORKER, HEAD OF THE DEPARTMENT OF SOCIAL WORK AND SOCIOLOGY AT CHRIST UNIVERSITY, INDIA

**"CO-BUILDING SOCIAL TRANSFORMATION
AN INDIAN EXPERIENCE"**

[WATCH HERE](#) Available languages: English | Russian



DIMITRA-DORA TELONI

SOCIAL WORKER, REPRESENTATIVE OF SOCIAL WORK ACTION NETWORK (SWAN), GREECE.

**"THE NEVER-ENDING CRISES OF NEOLIBERAL CAPITALISM.
POLITICAL ACTION AND SOCIAL WORK IN THE POST-COVID19 WORLD"**

[WATCH HERE](#) Available languages: English | Russian



MEET IFSW

 [WATCH HERE](#)

Presenters: Rory Truell, IFSW Secretary-General; Lola Casal-Sanchez IFSW International Relationship Manager; Pascal Rudin, IFSW Operational Manager; Priska Fleischlin IFSW United Nations Commissioner; Dawn Hobdy, IFSW Ethics Commissioner, Vassilios Ioakimidis, IFSW Educational Interim Commissioner; Meredith Power, Director IFSW Climatic Change Program.

The International Federation of Social Workers (IFSW) is the global body for the profession. The Federation and its national members strive for social justice, human rights and inclusive, sustainable social development through the promotion of social work best practice and engagement in international cooperation.

Watch this session to learn about the structure of IFSW

- IFSW Secretariat
- IFSW UN Commission
- IFSW Ethics Commission
- IFSW Human Rights Commission
- IFSW Interim Education Commission
- IFSW Climatic Justice Program



IFSW RESEARCH ON SOCIAL WORK WORKING CONDITIONS REPORT

 [WATCH HERE](#)

Presenters: David N Jones (IFSW), Silvana Martinez (IFSW), Jermaine Revalier (Bath Spa University), Paula McFadden (Ulster University), Rory Truell (IFSW).

The International Federation of Social Workers (IFSW) is leading a long-term, global campaign, working closely with IFSW member organisations, to improve the working environment of social workers. A core element of the campaign is objective research to gain the first ever global overview of the of the impacts of working conditions on social workers, the impact that these have on social worker wellbeing, and how wellbeing can be improved, aiming to shine a spotlight on the everyday working environment of social workers.

The research is being undertaken by Bath Spa University Centre for Health and Cognition (in association with Ulster University School of Applied Social and Policy Sciences) in partnership with IFSW. The first report will be published in 2020 and launched at this virtual conference in July 2020.

Working through IFSW member organisations and social media, a pilot global study of social workers was launched in November 2019 remaining open until March 2020. Social workers from around the world completed the online survey, which was available in several languages and has enabled comparisons with the wellbeing of professional in related sectors.

The survey tools used in this project are all academically valid and reliable. In addition to a measure of wellbeing (the Warwick-Edinburgh Mental Wellbeing Scale), working conditions was measured via the following seven factors:

- Demands: the amount of work (or workload) respondents had.
- Control: how much say individuals have over the way in which they do their jobs.
- Managerial support: support received from direct line managers.
- Peer support: support gained from colleagues around them.
- Relationships: whether respondents had strained relationships at work.
- Role: the individual's understanding of their role within the organisation.
- Change: how well change is communicated in the organisation.

Results from 3,451 responses demonstrated that working conditions exist in the bottom 25th percentile in comparison to other occupational types. This means that, globally, social worker working conditions are worse than 75% of other occupations. Furthermore, six of the seven working conditions (all except managerial support) significantly impacted wellbeing, meaning that improving upon these six factors should also improve social worker wellbeing. Finally, just 35% suggested their pay was commensurate in comparison to other similar occupations in their country.

Available languages: English | Russian





IFSW RESEARCH ETHICAL CHALLENGES FOR SOCIAL WORKERS DURING COVID-19 AND BEYOND

 [WATCH HERE](#)

Presenters: Sarah Banks Durham University, UK; Michelle Shum, Hong Kong Baptist University, Hong Kong; Ana M. Sobočan, University of Ljubljana, Slovenia; Kim Strom, University of North Carolina, USA; María Jesús Úriz, Public University of Navarra, Navarra, Spain; Merlinda Weinberg, Dalhousie University, Canada.

This session will focus on a recent rapid research study of social workers' ethical challenges, undertaken by IFSW in May 2020 in partnership with a team of international academics. We will present briefly the key themes arising from social workers' accounts of their experiences, and then discuss what this means for ethical practice and policy in social work. How can social workers hold onto and enact their core values in the new and uncertain conditions of physical distancing, digital working, health risks, and growing inequalities and needs experienced by people using social work services? How do we rethink our ethical priorities, find time for ethical reflection and advocate for policies and practices that are as humane and fair as possible? After short presentations and provocations, we will engage in dialogue and discussion with participants, to hear your stories and your views.

The 6 people named above will be present on the panel. The other members of the research group are: Tian Cai, Durham University, UK; Ed de Jonge, University of Applied Sciences, Utrecht, Netherlands; Jane Shears, The IFSW Ethics Commission and BASW; Rory Truell, IFSW Secretary-General.

Available languages: English | Russian

PRESENTATION GLOBAL AGENDA REPORT 2018 – 2020

 [WATCH HERE](#)



Presenter: David Jones

The Global Agenda for Social Work and Social Development was launched at the 2010.

world conference in Hong Kong. Now, one decade later, the Global Agenda Coordinator, David N Jones, reflects on a decade of The Global Agenda and launches the fourth Global Agenda report.

David will:

- Briefly summarise The Global Agenda process.
- Present the global overview from five regional reports on the final Global
- Agenda thematic pillar on 'Strengthening recognition of the Importance of Human Relationships.'
- Reflect on the evaluation of The Global Agenda process.
- Look forward to the consultation on the second decade of The Global
- Agenda and the role of this conference in that process

Available languages: English | Russian



MEET THE AUTHORS SESSION

AGÜERO, JUAN (SESIÓN EN ESPAÑOL)

[WATCH HERE](#)

Doctor en Trabajo Social de la Universidad Nacional de La Plata, Argentina. Doctor en Ciencias Económicas de la Universidad de Buenos Aires.

"EL MUNDO DE LA VIDA EN EL TRABAJO SOCIAL. LA COMPRENSIÓN DE LOS SUJETOS SOCIALES Y SUS MUNDOS DE VIDA PARA UNA INTERVENCIÓN SOCIAL SIGNIFICATIVA Y EMANCIPADORA EN EL TRABAJO SOCIAL"



Los significados y potencialidades de la categoría mundo de la vida son enormes para el Trabajo Social. Sin embargo, se encuentran totalmente inexplorados e inexplorados. Este libro aborda esta categoría desde la fenomenología de Edmundo Husserl, la sociología de Alfred Schütz y la teoría social de Jürgen Habermas.

Además, analiza sus vinculaciones con el concepto de vida cotidiana. En el Trabajo Social, el mundo de la vida aumenta las posibilidades de comprensión de la vida social y de los procesos de intersubjetividad e interacción entre los sujetos sociales. Aumenta también las posibilidades de producción de conocimientos y la potencialidad de las prácticas de intervención social.

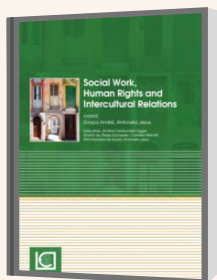
Además, permite mirar la realidad social de manera holística y dialéctica, como condensación de complejas tramas de relaciones sociales y de contextos, que atraviesan y configuran a los sujetos sociales y los procesos de intervención social que lleva a cabo el Trabajo Social.

ANDRE, GRAÇA

[WATCH HERE](#)

Social worker and member of Portuguese Association of Social Workers.

"SOCIAL WORK, HUMAN RIGHTS AND INTERCULTURAL RELATIONS"



This e-book edition "Social Work, Human Rights and Intercultural Relations" comes from the Social Work course at the Universidade Católica Portuguesa in Lisbon. This refers to the issue, the International Days of Social Work that was held on 6th and 7th March 2019. That event ran for two working days, with lectures and sessions that were addressed to the Social Work Students (1st, 2nd and 3rd cycle) in the morning and open lectures in the afternoon for all of the academic community and practitioner Social Workers.

CEBOLLA, ÓSCAR (SESIÓN EN ESPAÑOL)

[WATCH HERE](#)

Usuario de Servicios Sociales, Licenciado en derecho / Comunicador en lengua de Signos. Artista gráfico, autor/ilustrador de varios cuentos ilustrados

"EL ARTE DEL TRABAJO SOCIAL"



Una investigación que abarca cinco archivos ministeriales, universitarios y eclesiásticos. La recuperación de secretos perdidos y de un fondo fotográfico olvidado. Una iconografía de más de medio centenar de imágenes que se concretan en treinta y cinco ilustraciones sobre trabajo social y sobre sus protagonistas: las trabajadoras sociales. Un libro diferente a todo lo que hayas visto y leído sobre tu profesión.

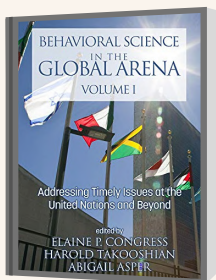


CONGRESS, ELAINE

[WATCH HERE](#)

Elaine Congress, MSW, MA, DSW, LCSW Is Associate Dean and Professor at Fordham University Graduate School of Social Service in New York City. Her email is congress@fordham.edu

"BEHAVIORAL SCIENCE IN THE GLOBAL ARENA: ADDRESSING TIMELY ISSUES AT THE UNITED NATIONS AND BEYOND"

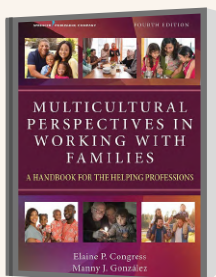


This book is very helpful for any social work engaged in international work who would like to learn more about the United Nations, the Sustainable Development Goals, and the current issues the United Nations is facing. Practitioners will find this book informative and helpful also well as academics will welcome that each chapter in this book provides a glossary, study questions and current citations.

Although there are other older books that address the UN, this book is unique in the way it presents the essential information that social workers need to know about the UN and how social workers representing IFSW connect with the UN.

This book is very valuable as it adopts a multi-professional approach to examining and moving toward achieving the SDGs. In addition to a multidiscipline approach this book also has a multigenerational approach in that a number of students and young people served as co-authors.

"MULTICULTURAL PERSPECTIVES IN WORKING WITH FAMILIES"



Multicultural Perspectives in Working with Families will be of special interest to social workers who work with families from diverse backgrounds, as well as for academics who are preparing students for working with these families. This fourth edition is unique in that it adopts an intersectional approach as in addition to looking at culture and ethnicity the book also considers socio-economic status, age, gender, sexual orientation, religion, immigration status, nationality, educational background. In addition to an intersectional approach to understanding and working with families, the contributing authors are from two different disciplines. While the majority of chapters are written by social workers several chapters are authored by psychologists who have worked with new types of families and who had much experience with families from different cultural backgrounds.

Click [here](#) to read more

JONES, DAVID

[WATCH HERE](#)

Social Worker, Global Agenda Coordinator, Chair of the International Committee of the British Association of Social Workers, Director and Consultant of People Need People Consulting Ltd, Former Global IFSW President (2006 – 2010)

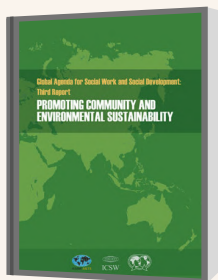
"GLOBAL AGENDA FOR SOCIAL WORK AND SOCIAL DEVELOPMENT: FOURTH REPORT"



Strengthening Recognition of the Importance of Human Relationships. This the fourth and final report from the International Association of Schools of Social Work (IASSW), the International Council on Social Welfare (ICSW) and the International Federation of Social Workers (IFSW) on the first decade of The Global Agenda for Social Work and Social Development 2010-2020 (IFSW et al. 2012, IASSW et al. 2014, IASSW et al. 2016, IASSW et al. 2018) is focused on strengthening recognition of the importance of human relationships. The report includes a Global Overview, five regional reports on that theme, a description of the process of The Global Agenda, an evaluation of the decade of activity and a chapter looking to the next decade.

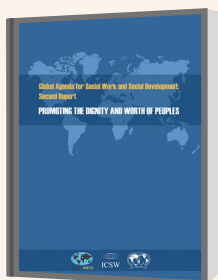


"PROMOTING COMMUNITY AND ENVIRONMENTAL SUSTAINABILITY"



This is the third of a series of four reports on The Global Agenda for Social Work and Social Development from IASSW, ICSW and IFSW. It presents the findings of five Regional Observatories that have examined social work and social development practice related to the third pillar of The Global Agenda. These observations are set in the context of social, environmental, political and economic realities of 2016-2018. One objective of this third report is to open up the debate about how to shape the practice and policy responses for social work and social development arising from the commitment to promoting community and environmental sustainability. What does this mean for those involved in the daily delivery of social work and social development? How should this commitment change education for practice? What does it mean for day-to-day practice? How should social work and social development be contributing to the shaping of local, national and international social policy in a way which takes account of the grave threats to the environment and the undermining of a sense of community in many places?

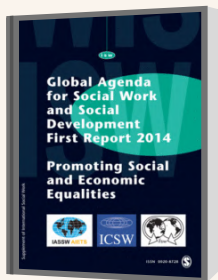
"GLOBAL AGENDA FOR SOCIAL WORK AND SOCIAL DEVELOPMENT: 2ND REPORT"



Respect for 'the dignity and worth of peoples' is the second pillar of The Global Agenda for Social Work and Social Development. The concept is at the heart not only of professional ethical codes but also of international conventions and statements on human rights and peaceful coexistence. These aspirations aim to shape environments in which people can live without fear, give expression to their identity and personality as they wish whilst showing respect to others, care for their family and community members, practice their beliefs and religions, participate in and shape their communities through social as well as political engagement and have access to the resources needed for a dignified and secure life.

This is the second of a series of four reports on The Global Agenda for Social Work and Social Development from IASSW, ICSW and IFSW. It presents the findings of five Regional Observatories that have examined social work and social development practice related to this second pillar of the Global Agenda for Social Work and Social Development. These observations are set in the context of the social, political and economic realities of 2014-16

"GLOBAL AGENDA FOR SOCIAL WORK AND SOCIAL DEVELOPMENT: FIRST REPORT – PROMOTING SOCIAL AND ECONOMIC EQUALITIES"



'The First Global Report on Social Work and Social Development: Promoting Social and Economic Equalities' was launched in Melbourne, Australia today. The report is built on examples of effective social work practice from around the world, illustrating the essential contribution of social workers to communities. The report highlights the growing social crisis resulting from increasing inequality. The report is the first in a series of bi-annual statements developed by IFSW and its global partners.

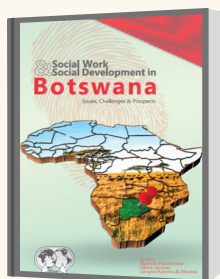


KGOMOTSO JONGMAN

[WATCH HERE](#)

Youth development specialist with the University of Botswana department of Social work. Manager director of a social work private practice called Jospeaks PTY (LTD) formerly known as Jongman's community and Youth Intervention services. Technical Advisor: Botswana National Association of Social Workers

"SOCIAL WORK & SOCIAL DEVELOPMENT IN BOTSWANA"



Foretelling The History of Social Work: A Botswana Perspective. This book by Kgomotso Jongman, a Social Work Lecturer at the University of Botswana provides an insight into the growth and development of the social work profession in one of fastest developing countries in southern Africa. The author provides an insight into how social work has developed in this rapidly changing country from pre-colonial, colonial and then post-colonial times to the present day, how its history has been shaped by the traditional structures of Botswana life and communal values to more organised community development and now professional social work practice.

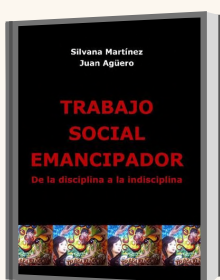
MARTINEZ, SILVANA & AGÜERO, JUAN. [SESIÓN EN ESPAÑOL]

[WATCH HERE](#)

Silvana Martinez, Presidenta de la FITS, Doctora en Ciencias Sociales de la Universidad Nacional de Entre Ríos, Argentina.

Juan Agüero, Doctor en Trabajo Social de la Universidad Nacional de La Plata, Argentina. Doctor en Ciencias Económicas de la Universidad de Buenos Aires.

"TRABAJO SOCIAL EMANCIPADOR. DE LA DISCIPLINA A LA INDISCIPLINA."



Este libro plantea una propuesta de Trabajo Social Emancipador que, si bien no niega la existencia de otras formas de pensar, sentir y hacer Trabajo Social, intenta ser una propuesta superadora pensada desde y para América Latina. La aspiración más profunda de los autores es que esta propuesta se consolide como un proyecto genuino de Trabajo Social, que recupere nuestras voces, experiencias, historias y trayectorias. Es una propuesta de Trabajo Social antiopresivo, indisciplinado, cuestionador, pero a su vez propositivo y creador. Un Trabajo Social que opta, como condición "sine qua non", por la rebeldía y que plantea una lucha profunda contra la resignación y el desánimo, la comodidad y la mediocridad, el facilismo y la indiferencia. Es una propuesta profundamente optimista, porque cree en la posibilidad de transformación social y tiene como apuesta central que "otro mundo es posible".

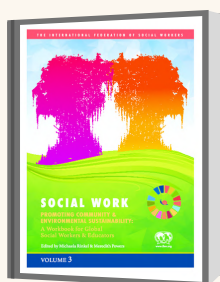
RINKEL MICHAELA AND POWERS MEREDITH.

[WATCH HERE](#)

Michaela Rinkel, PhD, LICSW (pronouns she/her) currently serves as associate professor and BSW program chair in the School of Social Work at Hawai'i Pacific University, USA.

Meredith C.F. Powers, PhD, MSW, (pronouns she/her) is an assistant professor of Social Work at the University of North Carolina Greensboro, USA.

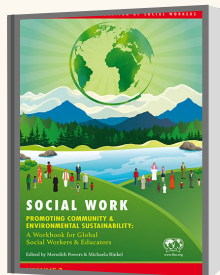
"SOCIAL WORK PROMOTING COMMUNITY AND ENVIRONMENTAL SUSTAINABILITY VOLUME 3"



This volume of the workbook series is thus, an attempt to demonstrate to the profession our relevance to the SDGs, as well as to demonstrate to the world that social work is essential to the realization of sustainability, within and beyond the SDGs. This book is intended as a tool for international social work practitioners, students, and educators to help advance the Global Agenda for Social Work and Social Development theme of "working toward environmental sustainability". It is the third volume in the series and is formatted as a workbook, with short lessons and exercises to help you apply the lessons theoretically and in your own practice. These lessons could apply to research, policy, ethics, practice, theory, interdisciplinary work, and more. Whether you are a longtime supporter of social workers investing in social and environmental sustainability work, or if you are new and curious about the topic, we hope this resource will inspire and equip you.

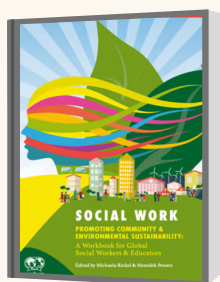


"SOCIAL WORK PROMOTING COMMUNITY AND ENVIRONMENTAL SUSTAINABILITY VOLUME 2"



This volume of the workbook series focuses primarily on Indigenous voices and knowledge, ecotherapeutic practices, and the interdisciplinary nature of sustainability in social work. As allies with Indigenous peoples, we aim for this workbook resource to make space for those working to decolonize, especially within the social work profession in education, research, and practice. This book is formatted as a workbook, with short lessons accompanied by exercises that help you apply the lessons theoretically and in your own practice. It is intended as a tool for international social work practitioners, students, and educators to help advance the Global Agenda for Social Work and Social Development theme of working toward environmental sustainability. We hope that by making this workbook available, we are enabling climate justice issues to be acknowledged as urgent and repositioned as central to social work in particular, and to life in general.

"SOCIAL WORK PROMOTING COMMUNITY AND ENVIRONMENTAL SUSTAINABILITY VOLUME 1"



This book is intended as a tool for international social work practitioners, students, and educators to help advance the Global Agenda for Social Work and Social Development theme of "working toward environmental sustainability". The four themes of the Global Agenda are interwoven and all equally important; there is no way to help those in social, economic, and/or political peril without also looking at their physical environment, both natural and built. It is imperative that we see the bigger picture and acknowledge these inextricable links as we engage in work at all levels to address global injustices by promoting community and environmental sustainability.

MING-SUM TSUI AND PATRICK O'LEARY.

[WATCH HERE](#)

Ming-sum TSUI, Co-Editor, International Social Work Journal. Professor & Felizberta Lo Padilla Tong Dean of Social Science

Patrick O'Leary, Co-Chief Editor of International Social Work (SAGE). Director of Violence Research and Prevention. Griffith Criminology Institute & Professor of Social Work. International Lead.

"INTERNATIONAL SOCIAL WORK JOURNAL"



International Social Work is the official journal of the International Association of Schools of Social Work (IASSW), the International Council on Social Welfare (ICSW) and the International Federation of Social Workers (IFSW). International Social Work is a scholarly refereed journal designed to extend knowledge and promote international exchange in the fields of social work, social welfare, and community development. Its major focus is on the interaction between processes of globalisation and the development of social welfare at national level, as well as social work and community development locally. It aims at examining the meaning of international social work in practice and theory, and exploring how those concerned with social work and community development can engage with international issues. The journal also wants to encourage publication of comparative studies and cross-national research. International Social Work provides information on current international developments, education and training relevant to social work, social welfare and community development. In addition to full-length articles, the journal features shorter "brief notes" contributions, as well as news and views from the owner associations. Abstracts of articles are translated into French, Spanish, Russian, Chinese and Arabic.

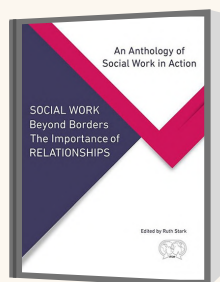


STARK RUTH

[WATCH HERE](#)

Chief of the Matheng section of the Lokomasama chiefdom, Portloko district, Northwest Sierra Leone, MBE by Queen Elizabeth for services to social work, Former Global IFSW. President (2014 – 2018).

"SOCIAL WORK BEYOND BORDERS THE IMPORTANCE OF RELATIONSHIPS (IFSW, 2019) AN ANTHOLOGY OF SOCIAL WORK IN ACTION FROM AROUND THE WORLD – REFLECTIVE PRACTICE BUILDING GLOBAL KNOWLEDGE"



Social work happens where people work together to create social development. The approach in this book provides living demonstrations of the social work role. It takes as its theme the fourth pillar of the Global Agenda for Social Work and Social Development. Every story relates to relationships that are created to achieve change. Telling people's stories, describing their experience, using reflective practice, has significant advantages over more traditional social science research methodologies which all too often squeeze practice approaches into non-functional linear frameworks. Rather than following an 'evidence-approach', which usually minimises complexity and always lags behind adaptive and innovation practice, this anthology illuminates social worker's applying the profession's principles in contexts of significant complexity. Strengthening relationships, building solidarity and realising people's real interdependent power is at the heart of this book. Many more publications of this nature are needed to arouse discussion and reflection that will inspire future actions with families, communities and societies.



GLOBAL AGENDA LIVE PANELS

LIVE SESSIONS + LIVE QUESTION

The Global Agenda for Social Work and Social Development commenced in 2010 and set a strategy for 10 years. This produced the following themes:

- Promoting Social and Economic Equality
- Promoting the Dignity and Worth of all Peoples
- Promoting Communities and Environmental Sustainability
- Promoting the Importance of Human Relationship

These themes have a significant positive impact on uniting the global profession of social work and strengthened our global commitment to social change. It is now time, to set a new strategy for 2020 -2030. Join this live panel session on the 2020 to 2030 global agenda themes to shape the global future of the Social Work Profession. There will be 5-panel discussions each one comprising panels members from Africa, Asia-Pacific, Europe, Latina America and North America.

This is an opportunity to hear the proposed and challenges from social work colleagues of those regions. Conference participants from any region can participate in the panel by asking questions and providing their reflections on the new Global Agenda for Social Work.

GLOBAL AGENDA: IFSW AFRICA

LIVE PANEL July 15 th | 10H00 – 11H30 utc

Moderators: Anstance Fometu and Joseph Kayinga.

[WATCH HERE](#)

Panelist:

- Antoinette Lombard - Head of Department of Social Work and Criminology, University of Pretoria - South Africa
- Mbiyu Alice, Vice President – Kenya Association of Social Workers
- Noel Muridzo, IFSW Africa President
- Joachim Mumba, IFSW Africa Vicepresident
- Pauline Ndinelaio Haimene - Social Worker, SOS Children's Village Tsumeb – Namibia

GLOBAL AGENDA: IFSW LATINA AMERICA & CARIBBEAN [ESPAÑOL]

LIVE PANEL July 16 th | 15H00 – 16H30 utc

Moderators: Larry Alicea, President LAC Region.

[WATCH HERE](#)

Panelist:

- Tania Ramos, IFSW Latin America and The Caribbean Vice-president
- Iván De Jesús, Coordinator for the Global Agenda of Social Work and Social Development – IFSW LAC region
- Jorge Arturo Saenz Fonseca, President of the Latin America and The Caribbean Committee of Social Work Professional Organizations (Comité Latinoamericano y Caribeño de Organizaciones Profesionales de Trabajo Social/Servicio Social COLACATS)
- Paula Meschini, Dean of the National University of Mar del Plata, Argentina

GLOBAL AGENDA: ASIA- PACIFIC

LIVE PANEL July 17 th | 08h00 – 09h30 utc

Moderators: Teoh Ai Hua.

[WATCH HERE](#)

Panelist:

- Rose Henderson, IFSW Asia-Pacific President
- Irene Leung , IFSW Asia-Pacific Vice-president
- Mariko Kimura, Former IFSW Asia-Pacific President and member of the Japanese Federation of Social Workers
- Tan Tiong, Malaysian Association of Social Workers
- Linda Ford, Australia Association of Social Workers

Available languages: English | Russian

GLOBAL AGENDA: NORTH AMERICA

LIVE PANEL July 17 th | 15H00 – 16H30 utc

[WATCH HERE](#)

Moderators: Mildred C Joyner, DPS, MSW, BSW, LCSW
President of NASW | President of IFSW-North American Region.

Panelist:

- Janice Christianson-Wood, MSW, RSW. Immediate Past President, Canadian Association of Social Workers and Immediate Past IFSW President North American Region
- Robin S. Mama, PH.D., LSW. Professor and Dean, School of Social Work. IFSW Representative to the United Nations, NY.
- Kathryn Conley Wehrmann, Ph.D., LCSW. Immediate Past NASW President and Immediate Past IFSW Vice President North American Region.
- Joan Davis Whelan, MSW, RSW. President, Canadian Association of Social Workers

GLOBAL AGENDA: IFSW EUROPE

LIVE PANEL July 17 th | 10H00 – 11H30 utc

Moderators: Ana Radulesco, IFSW Europe President.

[WATCH HERE](#)

Panelist:

- David Jones, British Association of Social Workers
- Herbert Paulschin, Austria Association of Social Workers
- John Brennan, IFSW Europe Vice-president
- Nicolai Paulsen, Danish Association of Social Workers
- Omar Mohamed, Student of Social Work
- Siobhan Maclean, Social Work trainer

Available languages: English | Russian





GLOBAL AGENDA OPEN MIC SESSIONS

This session is a meeting point to ensure that the perspectives of all the participants of the conference will be included in developing the 2020 to 2030 Global social Work Agenda.

Everyday conference participants can add their reflections, feedback and ideas based on what they have heard, the presentations they have seen, and their life experiences. All of the comments contributed to the Open Mike Session will directly form a part of the consultation in setting the 2020 to 2030 Global Agenda for Social Work.

All contributions are in text (writing). You can make your contributions at any time during the conference, and the two IFSW Global Agenda representatives, Rory Truell and Rose Henderson will provide their reflections on the discussion between 17:00 and 18:00 UTC time on the 15th through to the 18th July.

Throughout the conference, Rose and Rory are working with The Themes Development Committee that is watching all the conference proceedings to bring together everyone's perspectives. The Committee's task is synthesize the contributions into a frame work of themes that will be presented at the end of the conference. The Committee comprises the IFSW Executive members, representatives from the Tripartite Global Agenda Taskforce and representatives from each to the conference partners.

GLOBAL AGENDA OPEN MIC LIVE SESSION

- Open Mike Session – July 15h. 17h00 – 18h00 (UTC). [WATCH HERE](#)
- Open Mike Session – July 16h. 17h00 – 18h00 (UTC). [WATCH HERE](#)
- Open Mike Session – July 17h. 17h00 – 18h00 (UTC). [WATCH HERE](#)
- Open Mike Session – July 18h. 17h00 – 18h00 (UTC). [WATCH HERE](#)

IFSW FRIENDS RECEPTION

IFSW Friends are welcome to join the IFSW President, Secretary-General and Regional representatives to meet informally, have fun together and acknowledge the way that funds produced by IFSW Friends have furthered the social work profession.

Anyone can join as a Friend of IFSW. Friends join to show their support for international social work and to become of a world-wide community. As a Friend of IFSW you receive:

- Free online access to the journal: International Social Work (ISW) published by Sage publications. You will be able to access all the articles in the journals dating back to January 1959.

- Advance access to all IFSW publications at reduced cost.
- Discounted conference registration fees (whenever possible).
- The opportunity to create and/or participate in international, regional or local social work or social justice campaigns.
- The certificate of 'IFSW Friends Status' membership



IFSW FRIENDS RECEPTION LIVE SESSION

Available languages: English | Russian

KNOW OUR PARTNERS





ABSTRACTS

ONLINE
CONFERENCE

THE 2020 TO 2030
SOCIAL WORK GLOBAL AGENDA
CO-BUILDING SOCIAL TRANSFORMATION

15 - 19
JULY 2020



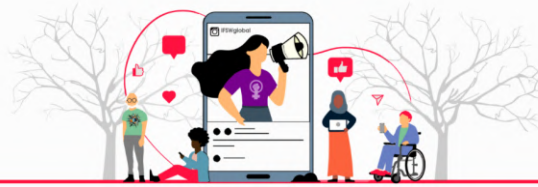
ABSTRACTS

INDIGENOUS COMMUNITIES: KNOWLEDGE AND RIGHTS

- [IC007 | Positioning First Nations Childhood theories; for community, curriculum, policy and practice.](#)
- [IC008 | Strengths and Limitations of Social Work Education in India: Academicians Perspectives](#)
- [IC010 | Ethno-educational territories, early childhood education, child mortality - São - Maria](#)
- [IC012 | Aroha within 21st century transformative social work relationships and process](#)
- [IC013 | Co-construction and shared meaning making in social work practice with indigenous peoples of Aotearoa/New Zealand](#)
- [IC020 | The Politics of Hunger –Postcolonial Social Work Analysis](#)
- [TP003 | Familias campesinas e indígenas en clave del buen vivir: Brasil, Colombia, Chile](#)
- [TP174 | Indigenous women from Northern British Columbia share their insight regarding their](#)
- [TP231 | From Suffering to Contribution and Connection](#)
- [TT029 | "Shan" - The Understandings on Developing Social Work Profession in China](#)
- [TT054 | Rights & Entitlement : The Experience of Land issues of Plain Land Indigenous Communities of Bangladesh](#)
- [TT058 | The Need for a Buddhist Social Work Approach to Asian Culture](#)
- [WP010 | Calling our Children Home: Restoring Balance in Our Nations](#)
- [WP011 | Ani To Pisi: Changing the relationship between social work and Indigenous people](#)
- [WP013 | Indigenizing Therapeutic Frameworks in the Human Services Field](#)
- [WP072 | Bio Information](#)

STRENGTHENING COMMUNITIES

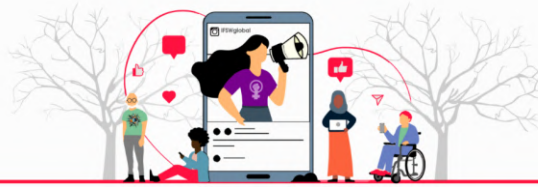
- [PD006 | Strengthening Communities and Promoting Critical Consciousness through Community Development Approach](#)
- [PP005 | Constructing an anti-violence community: integrated seeds training practice model](#)
- [PP011 | Taiwan morakot typhon 2009/8/8](#)
- [PP017 | New Implementation of Medicaid Managed Long-Term Services and Supports and Its Impact on the Limited English Proficiency Communities, Especially on the Asian Community in Philadelphia, PA](#)
- [PP020 | Young adults with intellectual disability who are not involved in employment, education or daily activity: The experiences of becoming and being not involved in traditional occupations](#)
- [TP001 | Do neighborhood processes address all subtypes of child maltreatment? A systematic literature review](#)
- [TP012 | Examination of positive youth development in young South Asian and South-East Asian minorities in Hong Kong](#)
- [TP031 | title: unavailable](#)
- [TP043 | Voices from the fields: The Use of Community Educational Radio Program as a Means to strengthen Partner Communities](#)
- [TP047 | The knowledge needs of children and young people whose parents have mental illness: A systematic review of international literature](#)
- [TP060 | Building a Movement: Community Development and Community Resilience in Response to Extreme Events](#)
- [TP076 | Coming together with First Nations Child and Family Service Agencies to Implement Structured Decision Making](#)
- [TP082 | The Intimacy of Family Based Care](#)
- [TP085 | Agenda 2030 and disaster recovery challenges in developing countries: A possible social work intervention in sustainable disaster recovery](#)
- [TP100 | THE ROLE OF CHURCHES IN STRENGTHENING A COMMUNITY](#)
- [TP121 | The present situation and trend of the Development of Social work institutions in China](#)



- [TP125 | Community-Based DBT-Informed Parenting Skills Program for Caregivers and Professionals Promoting Mental Health Wellness](#)
- [TP129 | Life Course and vulnerability among low income mothers in rural Botswana](#)
- [TP160 | Our Keluarga \(OK\): A Community Programme for families facing Incarceration Issues](#)
- [TP167 | Identification of Resilience Factors in Mozambique After Cyclone Idai](#)
- [TP181 | Keeping 'Community' In a Community Health service](#)
- [TP204 | Collaboration between immigrant and refugee communities and the child welfare](#)
- [TP210 | An Impact Evaluation The impact of the skills training on Young persons](#)
- [TP238 | The Role of Social Work In Ending Youth Homelessness](#)
- [TP248 | "Men's Sheds: Work with men for capacity building, well-being, violence prevention, and allyship."](#)
- [TP270 | Preventing Domestic violence Latino men well group](#)
- [TT001 | The Heroes from the background within the communities](#)
- [TT019 | Don't just do something](#)
- [TT059 | PERFORMING ARTS AND SOCIAL WORK: INITIATING CREATIVE AMALGAMATIONS](#)
- [TT063 | Spirituality Among Female Community Leaders in Jamaica: Implications for Community Organising](#)
- [TT064 | WOMEN LITERACY PROGRAM ON ILLITERATED WOMEN WITH CREATION OF WOMEN MUTUALITY FOR SOLIDARITY AT KILOMONI-UVIRA CITY / SOUTH KIVU -DRC](#)
- [TT067 | Social Work: Voice of the people](#)
- [TT069.2 | Measuring Perceived Burden of Informal Caregivers of Persons with Schizophrenia in Rural Chinese Communities](#)
- [TT071 | Strengthening Communities: One Step at a Time](#)
- [TT071.2 | Strengthening Communities: One Step at a Time](#)
- [TT074 | Strengthening Communities by reviewing the position of High-School dropout.](#)
- [WP026 | Always Wear Comfortable Shoes Practical Lessons](#)
- [WP027 | How to Lead and Who to Follow: Maximizing effort to increase impact;](#)
- [WP030 | Bridges to Sustainable Communities Suzie](#)
- [WP033 | Understanding Trauma Worskshop](#)
- [WP037 | Strengthening Individuals and Communities: Using the Labyrinth for Healing & Reconciliation](#)
- [WP039 | LEARN: A Community-Informed Shared Learning Program Addressing HIV through Harm Reduction in the Deep U.S. South](#)
- [WP044 | Supporting Women with Problematic Substance Use by incorporating FASD and Trauma Informed Approaches to Addictions Treatment](#)
- [WP045 | A look at the Lakeland Centre for FASD](#)
- [WP055 | Strengthening Communities Through High Fidelity Wraparound](#)
- [WP062 | Social work research with non-English speaking families: contextualizing meanings of families' experiences with child welfare](#)
- [WP063 | Supporting Success with International Students in Social Work Education](#)
- [WP066 | The FASD Prevention Conversation: It's Time to Talk About Alcohol and Pregnancy](#)
- [WP068 | Radical Resilience and Transformation](#)
- [WP070 | the gift of empowerment: A reflexive study of youth and community education based around young people from a Welsh African Caribbean background.](#)
- [WP081 | Community Collaboration and Fellowship: The Value of Sharing for Clients and Professionals](#)

SOCIAL AND HUMAN RIGHTS

- [PD011 | Internet and children rights: Pros and Cons](#)
- [PD013 | International Social Work Practice: Ethical issues and responses](#)
- [TP011 | Grounding and Guiding Human Rights Responses](#)
- [TP030 | Social Work Education and Disability in Australia: The Journey Continues](#)
- [TP033 | Caste Based Discrimination in India – Persistence in spite of Existing Policies](#)
- [TP066 | Living amidst waves of constant change: a cross-national comparison of how policy influences practice with people seeking asylum in Bavaria and Western Australia](#)
- [TP068 | "Death is more than just medical..."? Social Work's Role in Medical Assistance in Dying](#)
- [TP075 | The Other Hand; Walking to learn in Palestine](#)
- [TP077 | Human rights metaphors and stories: Pathways to social transformation](#)



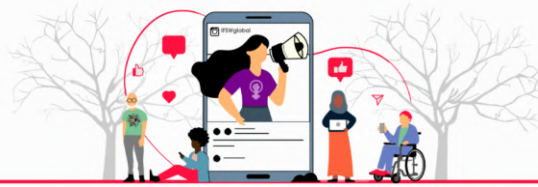
- [TP079 | First Generation Social Work Students: Impact on the Profession and Those We Serve](#)
- [TP097 | Exploring The Role of Social Workers In Incarcerated Women](#)
- [TP120 | Social Work and Human Rights](#)
- [TP146 | Neoliberalism and family planning in Brazil](#)
- [TP182 | Under-reporting in Abuse of Older Adults in the Prairie Provinces](#)
- [TP187 | TRAUMA, REDRESS AND HUMAN RIGHTS: The role of the Australian Association of Social Workers in creating Australia's National Redress Scheme for survivors of Institutional Child Sexual Abuse.](#)
- [TP197 | Feminist Climate Framework for Social Work: Gender and Social Responses to a Changing Environment](#)
- [TP201 | Mothers Matter: Advocating for Health Equity to Improve Maternal Mortality](#)
- [TP215 | Engaging Men in Violence Prevention and Gender Equality Learning Collaborative: Successes, Tensions and Next Steps](#)
- [TT022 | I Became "Black" When I Came To Canada](#)
- [TT048 | Right to communicate in my language](#)
- [TT050 | A social work toolbox :- Rethinking communities that are dealing with displacement and trauma](#)
- [TT080 | Burmese Refugee Children's Needs and Barriers to School Adjustment in the USA](#)
- [WP016 | Rethinking Human Trafficking Responses: A Postcolonial Feminist Social Work Perspective](#)
- [WP019 | SERVICIO SOCIAL, DERECHOS SOCIALES Y DEMOCRACIA EN BRASIL](#)
- [WP041 | Not in My Community: Supporting Affluence Survivors of Domestic Violence](#)
- [WP060 | Our Lives and Our Voices: Women Living with HIV and their involvement in Community-based Research and Dissemination](#)
- [WP136 | Dealing With Racism: Lessons Learned From Because We Matter Workshops](#)

SUSTAINABLE DEVELOPMENT GOALS

- [PD020 | Reimagining and optimizing social work practices for global competitiveness and sustainable future goals](#)
- [PP045 | Clinical Social Worker's Experience in Shared Decision Making \(SDM\) and the self-evaluation of participation effectiveness in Taiwan](#)
- [TP022 | SDG and social work education in countries with transition economies: case of Ukraine](#)
- [TP080 | How sustainable reconstruction from a disaster possible, a critical reflection of Paulai village](#)
- [TP178 | Canadian Bachelor of Social Work Education: Reaching UN Development Goals?](#)
- [TP193 | Creating a space for indigenous Sahariya youth to improve access to safe water in rural Rajasthan, India.](#)
- [TP208 | Cultural Sustainability in Business Education: the Aotearoa, NZ Experience](#)
- [TT005 | A Case of Multi-partner Project Models in Corporate Social Responsibility to achieve sustainable development in india](#)
- [TT042 | Influence of Professional Social Workers' Participation in Vocational Training Programmes on Economic Well-Being of Rural Dwellers in Lagos State, Nigeria](#)
- [WP002 | The 17 SDGs and their Implementation in Social Work Processes](#)
- [WP020 | International Migration and Social Development: Evidence from Benin City, Nigeria. Implications for Sustainable Development Goals](#)
- [WP023 | Survival of the fittest: Ethics & Professional Self-Care in Global Social Work](#)
- [WP034 | Trauma Treatment & the UN Sustainable Development Goals](#)

CHILDREN AND ADOLESCENT RIGHTS

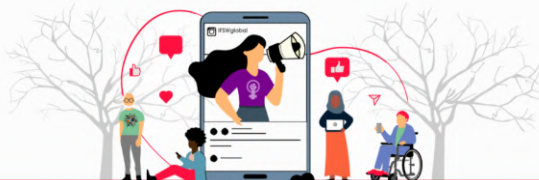
- [PP002 | Transition from the pediatric to the adult health care system is challenging for transition-age youth \(TAY\)](#)
- [PP007 | Youths' Understandings of Risk, Safety, and Online Relationships](#)
- [PP024 | The Kodomo-Shokudo: Cafeteria for Children as a Poverty Reduction Program in Japan](#)
- [PP027 | Children and Adolescent of Sanitary Workers of India: A Case of Deprived Rights and Social Work intervention](#)
- [PS054 | What do we know about the role of bicultural attitude among multicultural adolescents? The mediated moderation effect of friend support on learning attitude through ego resilience](#)



- [TP002 | Los niños, los adolescentes y las familias: estudios e investigación en el Brasil.](#)
- [TP008 | SOCIAL WORKERS AND THE MENACE OF CHILD LABOR IN SOUTH-WESTERN NIGERIA: PROBLEM AND PROSPECT.](#)
- [TP014 | It takes a village to raise a child; and as the child grows up](#)
- [TP019 | Youth ratings of care quality and qualitative reflections on their placement experiences in residential care](#)
- [TP023 | Spirituality: A significant right of child and adolescent social work](#)
- [TP037 | Understanding child safety concerns about visitation from abused women's](#)
- [TP041 | Military Parent's Post Traumatic Stress Disorder \(PTSD\) and Children's Mental Health: A Scoping Review](#)
- [TP048 | Mental Health and Stigma in Schools: Educators and Parents Perspectives](#)
- [TP049 | Child sexual abuse material in the United States: Challenges and recommendations for improving practice](#)
- [TP064 | Understanding Islamophobia through the eyes of American Muslim Children: Religious Bullying and School Social Work Interventions](#)
- [TP084 | Family Violence a Challenge to the Rights of Children: A Proactive Response from Educators in Schools](#)
- [TP101 | Role of Child Waste Pickers in Solid Waste Management](#)
- [TP110 | Chinese Youth and Criminal Justice System in Canada](#)
- [TP122 | Need for more child sensitive and child rights-based policies: A case of the street child situation in Lusaka, Zambia.](#)
- [TP123 | Child sexual abuse materials: Service provider experiences across Alberta](#)
- [TP149 | The needs of children with dyslexia and parental stress in Mainland China](#)
- [TP161 | Social worker engagement with client information using social media](#)
- [TP176 | Child Abuse and Protection Dynamics: The Lagos State Government Experience](#)
- [TP199 | Florida's Child Welfare System During Hurricane Irma: Best Practices and Remaining Challenges](#)
- [TP200 | The Well Being of Foster Parents](#)
- [TP257 | Rights of Children Living in Families with Domestic Violence](#)
- [TT006 | Fighting sexual exploitation against children and teenagers on the Amazon Triple Border](#)
- [TT061 | The trial is not only a result.](#)
- [TT084 | UN general comment 21 on children in the street, situation implication](#)
- [WP051 | Hearing the voice of the child in child safeguarding processes](#)
- [WP079 | Responding to the needs of Hidden Young Carers across the Commonwealth](#)
- [WP083 | Responding to the needs of Hidden Young Carers across the Commonwealth](#)
- [WP085 | SOCIAL CONSEQUENCES OF RADICALIZATION OF VIOLENT EXTREMISM ON CHILDREN](#)

SOCIAL MOVEMENTS AND DEMOCRACY

- [PP003 | Micro / Mezzo / Macro Conceptualization of Public Library and Social Work](#)
- [PP004 | A retrospective of the trends of racism, xenophobia, and neo-nazism, and connections to right-wing populism and late-stage neo-liberalism](#)
- [PP025 | The Development of Asian Progressive Social Work Network](#)
- [PP028 | Providing Higher Education to Refugee Camps](#)
- [TP024 | Speaking out against racism through social movement activism](#)
- [TP035 | Social movements and social protest actions: What should social workers do?](#)
- [TP108 | The socio cultural dimension of territory as the foundation for participatory](#)
- [TP183 | When the Colonized Rises-Up: a Puerto-Rican Experience](#)
- [TT008 | Building The Beloved Community Challenging the Neo Liberal Mode of Leadership](#)
- [TT046 | \(Virtual\) Space for Change: Youth Social Movements and the Online Medium](#)



INTEGRATION BETWEEN EDUCATION, RESEARCH AND PRACTICE

- [PP008 | Does the Media Get it Right?](#)
- [PP012 | Finding the Abstract: unavailable Pieces: Education, Advocacy, and Research in Pain Management of Chronic Diseases](#)
- [PP014 | The 2020 to 2030 Social Work Global Agenda: Co-Building Social Transformation](#)
- [PP019 | Development of Medical Specialties Social Work in Taiwan - Experience of a Regional Teaching Hospital](#)
- [PP023 | Journey Mapping](#)
- [PP026 | The Development of Cancer Counseling Support Center Utilization Model for Cancer Survivors in Japan](#)
- [PP032 | Addressing the Wounded Healer: Creating a trauma informed classroom for adult learners.](#)
- [SC001 | UNITY: How service users and carers support teaching and development of Social Work in Scotland](#)
- [TP009 | The Professional Capabilities Framework for Social Workers in England: creating a shared culture of excellence, ambition and values across the all sectors of the profession](#)
- [TP015 | Preventing Gun Violence in Schools: Ethical Responses to Serious but 'Non-Imminent' risks](#)
- [TP020 | Preparing trauma-informed social workers survey of social work programs in the USA and Canada](#)
- [TP029 | Using Standardized Simulated Learning in Social Work by Collaborating with Dramatic Arts](#)
- [TP036 | Building resilience in social work students in the UK](#)
- [TP039 | Exploring students' perception and experiences on social work field education](#)
- [TP046 | Innovative Problem Solving Utilizing a Design Thinking Approach](#)
- [TP050 | Give young people more power Youths' experiences transitioning to adulthood](#)
- [TP054 | The 'Social Worker Complex': Theorizations on ableism in social work practice and education](#)
- [TP087 | Project Based Learning in Social Work: An Epistemic Approach in Teaching Learning Process](#)
- [TP105 | isability A global agenda understanding the practice challenges for social work](#)
- [TP112 | Reviving Anti-Racism Pedagogy: Exploring the Experiences of Social Work Educators and Students in Post-Secondary Education](#)
- [TP118 | Exploration on the impact of expressive arts techniques to enhance group supervision for social work assistants in an acute hospital setting in Singapore.](#)
- [TP124 | Wearing a social work hat: The importance of developing a social work professional identity](#)
- [TP134 | Critical Hope Through Community: Reflections from a Holocaust Education Experience](#)
- [TP140 | Ireland \(North and South\) Study of Student Social Worker Demographics and Motivation to a Career in Social Work](#)
- [TP150 | Organizational Career Management and job satisfaction of Chinese social workers in Mainland China](#)
- [TP151 | The Value of Social Workers as Integrated Team Leaders](#)
- [TP157 | An investigation of the comparative effect of socio economic and school environmental](#)
- [TP170 | Data Boot Camp' at a Children's Mental Health Centre?: How Data](#)
- [TP173 | Group Work in Social Work Education in Eswatini, Africa](#)
- [TP179 | COPING STRATEGIES OF SOCIAL WORKERS OF PANTAWID PAMILYANG PILIPINO PROGRAM IN CEBU CITY PHILIPPINES: ETHICAL DILEMMAS IN DECISION-MAKING](#)
- [TP180 | Racialized Students Navigating University Programs in Helping Professions as the Spaces for Social Justice, Inclusivity, and Goodness.](#)
- [TP194 | Teaching participatory research: A way out for increasing students' interest in research](#)
- [TP196 | In search of meanings](#)
- [TP202 | Roles of Educational Programs and Professional Bodies for the Development of Social Work in China](#)
- [TP203 | Exploring the experiential and 'seeing with your own eyes, the impact of student field trips](#)
- [TP205 | Commorn outcomes Initiatives](#)
- [TP207 | Ensuring a sustainable social work practice through self-care training of social workers](#)
- [TP213 | Courage in Social Work](#)
- [TP216 | Engaging social work students through creative practice in the history of anti-colonial resistance in Canada](#)
- [TP218 | Using a Postcolonial Lens to Examine Development Knowledge and Practice: Researching Domestic Violence Prevention in Nepal](#)
- [TP249 | Blend approach for social work learning: A reflective-based and user-oriented pedagogical model](#)



- [TP250 | Improving the public perception of social work: Responsibilities across education, policy, practice and research.](#)
- [TP268 | Reflective processes in pre-professional practices. The incidence of Supervision in Social Work training at the National University of Mar del Plata](#)
- [TP269 | Bringing Hujra to Canada – A culturally relevant community based transformative learning approach for gender justice among Pashtun Community in Canada](#)
- [TP272 | knock it down](#)
- [TT012 | Honouring the past to understand the present and plan for the future - developing the policy voice of Social Work in Australia](#)
- [TT018 | The challenges in recruiting mothers of preschool-aged children”](#)
- [TT049 | Talentscanner - or how to find talented Social Work students!?](#)
- [TT057 | A Cohesive Approach to Social Work](#)
- [TT083 | Transforming the Field Education Landscape: A Partnership Project](#)
- [TT091 | Level up!](#)
- [WP012 | Truth, reconciliation and social work education](#)
- [WP015 | Male victims of domestic abuse – perception and reality](#)
- [WP017 | Design Thinking for Social Workers: How Might We Build Future Human-Centered Social Work Designers](#)
- [WP031 | DEGITALOGY IN SOCIAL WORK PRACTICE: UNDER THE DEGITALIZATION AND ITS SOCIAL REFORMATION ROLE”](#)
- [WP035 | Utilizing Standardized Project Management Knowledge and Methods: One of the Global Agenda for Social Work in 2020-2030](#)
- [WP040 | How do we prepare social work students for the challenges](#)
- [WP053 | Moving from a sub-field to center stage: Preparing the next generation through the ecosocial perspective](#)
- [WP054 | Contributing to the Global Agenda: Building Social Work Capacity in Healthcare](#)
- [WP061 | Researching childhood ‘happiness’ for social work education and practice in the United Arab Emirates.](#)
- [WP064 | Reclaiming the learning and reflection of social work values in fieldwork placement: Social work students’ and fieldwork supervisors’ Account](#)
- [WP065 | Understanding An Invisible and Under Diagnosed Disability FASD Megan](#)
- [WP067 | Aligning Field Education Pedagogy with the Global Social Work Agenda: An International Consortium Approach](#)
- [WP071 | Collaboration and Innovation across the Continuum of Care in Child and Adolescent Campus Based Mental Health Programs](#)

SEXUAL AND GENDER DIVERSITY: COMMUNITY, PRACTICE AND RIGHTS

- [PP016 | Gender Differences in the Associations between Traditional Bullying, Cyberbullying and Depressive Symptoms amongst School-Aged Adolescents](#)
- [TP096 | Building Competence in Practice with the Polyamorous Community](#)
- [TP104 | From analysis to strategy: The role of social work in supporting the resistive activities of older gay men navigating health care systems](#)
- [TP111 | Experiences of Elderly Women Caring for People with HIV/AIDS in Masindi District, Uganda.](#)
- [TP133 | FEMINISMOS DEL SUR E INTERVENCIÓN SOCIAL: Genealogías, diálogos y debates](#)
- [TP135 | The highs and lows of sole parenting experienced by Wāhine Māori.](#)
- [TT017 | Educating about Sexual Health: The Experiences of a HIV Tester in the United States](#)
- [TT051 | Eugenics perspectives are still “alive” in Japanese society: the sexuality](#)
- [TT069 | 2\) How sex work exiting programs violate the rights of sex workers](#)



RESPONSES TO MIGRATION AND DISPLACED PERSONS

- [PP022 | Current Situation and Challenges of Social Workers in Supporting Foreign Residents in Japan](#)
- [PP040 | Interactive Influences of Age, Gender, Immigration, and Ethnicity: Lived Experiences among Widowed Older Chinese Immigrants](#)
- [TP052 | Pride and Prejudice](#)
- [TP058 | Venezuela Refugee Crisis: The work of UNHCR in Roraima, Brazil](#)
- [TP059 | Less is More: How Highly Traumatized Refugees find Healing in a Short-term Model](#)
- [TP065 | Strangers in the New Homeland: The Personal Stories of Jamaican Adults who Migrated to Canada as Children](#)
- [TP099 | Social workers as champions on hope in displacement](#)
- [TP107 | A social work framework for practice with return migrants](#)
- [TP148 | Social and Horticultural Therapy interventions with refugee children. Results from the Nakivale refugee settlement project and possible future policy prospects.](#)
- [TP159 | AN EVALUATION ON RESPONSES TO MIGRATION AND DISPLACED](#)
- [TP172 | Exploring the lived experiences of rural migration: Presenting the findings of the evaluation of the Multicultural Ambassador Program in regional Victoria, Australia](#)
- [TP185 | The Oslo standard for including refugees, a holistic approach](#)
- [TP191 | Improving quality of care for refugee women facing gender-based violence \(GBV\) through livelihood approaches in Jordan](#)
- [TP212 | Influence of family relation and immigration on Asian Americans' mental health](#)
- [TT024 | Inspirational Stories From Canada's Refugee Program As Told By A Front-Line Worker](#)
- [TT034 | Transnational Social Workers' understanding of Australian First Nations perspectives in statutory child protection service delivery](#)
- [TT043 | Can my Voice be Heard? A phenomenological report of the African Child in Nigeria's Internally Displaced Camps](#)
- [WP036 | Web of relational power Acculturation, racialization, citizenship Maria](#)
- [WP048 | Strengthening "Good Social Work Practice" in Settings of Armed Conflict: A Study of Syria](#)
- [WP076 | Mapping out the "refugee box": An institutional ethnography of homogenizing settlement practices](#)
- [TP300 | Gender-based violence and intergenerational trauma of sexual violence among adolescent refugees in urban settings in Uganda – emerging findings from a qualitative study.](#)

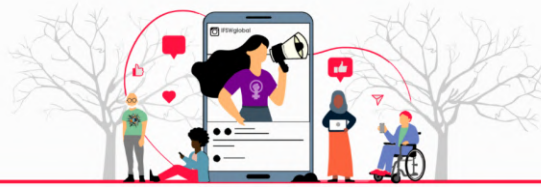
ENVIRONMENTAL JUSTICE

- [PP034 | Social work and environmental justice](#)
- [TP021 | Transformative ecosocial change in professional practice: Participatory action research with Australian social workers](#)
- [TP028 | It reevaluate the importance of the ecosystem in the indigenous community, and describe how the impact of the ecosystem directly affects the community](#)
- [TP078 | A Cross-Disciplinary Case Study of Ecological & Social Sustainability in East](#)
- [TP117 | From Social Justice to Environmental Consciousness : Rethinking Yoga's Potential Contributions to the Field of Social Work](#)
- [TP175 | Solastalgia: Social Work's Role in Addressing Impacts of Climate Change](#)
- [TP195 | Responding to Environmental Degradation: Three Local and Indigenous Models](#)
- [TT056 | Social farming as an approach to move towards sustainability](#)
- [TT060 | Social work ethic codes and environmental justice](#)



SOCIAL PROTECTION SYSTEMS

- [PP053 | The Mental Illness of Disaster Victims in South Korea](#)
- [TP004 | El poder de la escuta del profesional de trabajo social, junto a familias usuárias de los sistemas de protección social.](#)
- [TP005 | Emergence of social support system via community mental health outreach.](#)
- [TP032 | Threats of Brazilian ultraneoliberalism to the right of health: challenges and perspectives for Social Work](#)
- [TP071 | Social Insurance Participation and Urban Identity among the New Urbanites in China](#)
- [TP073 | Social Justice and the Australian Pension System. Are Inequalities increasing?](#)
- [TP074 | Supervisión, sistematización e intervención del Trabajo Social desde un enfoque situado](#)
- [TP091 | Examining the Benefits and Challenges of Differing Forms of Parenting Intervention \(psycho-educational vs parent-child\) for Women Experiencing Intimate Partner Violence and Their Young Children](#)
- [TP119 | The Effects of Social Welfare Budget on Elderly Suicide Rate in Local Governments: Focusing on the Difference between Urban and Rural Areas in South Korea](#)
- [TP130 | Licensed to protect - Case Finland](#)
- [TP143 | Secure Your Food Program Rationale](#)
- [TP145 | Secure Your Food - Indigenous Food Sovereignty](#)
- [TP147 | Changing the way we teach and intervene about suicide: The holistic empowerment approach](#)
- [TP152 | Social Policies to Support Children in Iran](#)
- [TP153 | Central Asia- the development of Social Work in recently independent nations.](#)
- [TP163 | Social work interventions in the rehabilitation of victims of wife-battering in Lagos state.](#)
- [TP190 | National Social Assistance Policy in Brazil: a policy-making study](#)
- [TP247 | The influence of 'Sun Tzu's Art of War' \(孙子兵法\) in Singapore's social](#)
- [TP255 | Building Social Work in Vietnam: Insights and Reflections](#)
- [TP256 | Intertwining of Corporate Social Responsibility and Sustainable Development Goals](#)
- [TP258 | Politics of Environment and Development A Case Study from Tamil Nadu, India](#)
- [TP259 | A blessing or a Curse? The Dilemma of Aging and the Quality of life of Older Persons...](#)
- [TP260 | Subsistence Commons and the paradox of development in India](#)
- [TP261 | Mindfulness management and social workers wellbieng](#)
- [TP262 | From Suffering to Contribution and Connection](#)
- [TP263 | Sustainable Development and Environmental Justice: Connecting Social Work...](#)
- [TP264 | Social Justice and the Australian Pension System. Are Inequalities increasing?](#)
- [TP265 | Grief Support by Social Workers in Covid-19 times' for the congress](#)
- [TP266 | Needs of seasonal migrants](#)
- [TP267 | Knowing IP Children Refugees: The Myanmar and Philippine Experience](#)
- [TP271 | Professionalizing Social Work in Guinea, West Africa](#)
- [TP272 | knock it down](#)
- [TT026 | Leadership in Public Child Protection: Leading to prevent Burnout among Social Workers](#)
- [TT041 | Social intervention for street children in Mbeya city-Tanzania East Africa](#)
- [TT044 | Operation Underground Railroad](#)
- [TT070 | les réalités du travail social auprès des enfants accusés de la sorcellerie*: cas de la République Démocratique du Congo](#)
- [TT075 | Developing the Social Work Role in Pain Management](#)
- [TT076 | Social Work in Strange Places](#)
- [TT077 | Teenage pregnancy in Freetown \(Sierra Leone\)](#)
- [TT078 | Constructing an anti-violence community: integrated seeds training practice](#)
- [TT079 | Collaboration A Key Strategy for Social Transformation](#)
- [TT086 | Implication for Social Workers in Africa](#)
- [TT089 | How can systems thinking inform teaching and research into supervision?](#)
- [TT226 | systèmes de protection sociale en Guinée](#)
- [WP024 | Running On Our Knees: why the child protection paradigm can't work and how to fix it](#)
- [WP029 | The provision of speciality DV parenting intervention within child protection settings: outcomes and practice applications](#)
- [WP056 | Shifting Practice: Re-thinking Child Protection Intervention with High Risk Youth](#)
- [WP069 | Neoliberal and conservative health threats](#)
- [WP072.2 | Gayle Gilchrist-James: Her Leadership and the Legacy She Left for Us All](#)



- [WP086 | Advancing discussion of systematic ant black racism in social work](#)
- [WP087 | Cultivating resilience, Native American](#)
- [WP088 | Exploring the Employment Experiences of Highly Skilled Refugees](#)
- [WP089 | Engaging youth in research: From participatory action....](#)

GENDER RIGHTS: DIFFERENT IDENTITIES

- [SC003 | "Chat & Release" for making mothers living with "disabled" children free from social restraints](#)
- [TP007 | GENDER STEREOTYPE MANAGEMENT FOR INCLUSIVE EDUCATION AMONG SENIOR SECONDARY SCHOOL STUDENTS IN RIVERS STATE NIGERIA](#)
- [TP086 | Women with Multiple Stigmas Ethnographic Enquiry](#)
- [TP156 | Land Tenure system in Nigeria and property right: Perspective from Gender Lens](#)
- [TP162 | SOCIAL AND EXTRA-LEGAL DETERMINANTS OF THE EFFECTIVENESS OF LAGOS STATE DOMESTIC VIOLENCE LAW IN REDUCING WIFE-BATTERING.](#)
- [TP186 | Diversity Families. The Social Institution remains, the Human links affective are transformed. The project proposes to place the study, analysis and research of contexts of high Exclusion, Discrimination and Social Risk with Families formed from Sexual Di](#)
- [TP214 | TOMORROW'S MEN TODAY: CANADIAN MEN'S INSIGHTS ON ENGAGING MEN AND BOYS IN CREATING A MORE GENDER EQUAL FUTURE](#)
- [TP217 | Engaging social work students through creative practice in the history Sage](#)
- [TP222 | The well-being of mothers: a mixed method case study of the role of the relational self-construal in social supports](#)
- [TT010 | Migrant Women and the Sex Industry: Their Lived Experiences](#)
- [TT055 | Women's participation in organizational activities in the Philippines](#)
- [WP047 | Faces of the Nigerian girl child at home and abroad](#)

PEACE BUILDING

- [TP040 | As a social worker can I also be peacebuilder in First Nations Child and Family Services?](#)
- [TP044 | Este trabajo es producto de un ejercicio reflexivo acerca de las perspectivas](#)
- [TP198 | Indigenous Peace Building Model of Rural India](#)
- [TT035 | Therapeutic Laughter: Peace Begins With A Smile](#)

ECONOMIC DEVELOPMENT: DISTRIBUTION OF WEALTH AND INEQUALITY

- [TP206 | Social work role in curbing youth unemployment in Nigeria](#)
- [TT053 | Social Work and Globalization: Preparing Youth for a Global Workforce](#)
- [WP046 | Innovations in Poverty Reduction: Financial Literacy Education and the Social Work Profession.](#)



ifsw.org

📷 @ifswglobal 🐦 @IFSW
#IFSW2020conference