

PROMOTING THE IMPORTANCE
of Human Relationships



PROMOTING THE IMPORTANCE
of Human Relationships



2020 End of Year Report

The International Federation of Social Workers

Imprint

Published by The International Federation of Social Workers
Maiengässli 4, 4310 Rheinfelden, Switzerland

Cover art: Martha Rothblum
Layout: Pascal Rudin

Web: www.ifsw.org
Email: global@ifsw.org

Copyright © 2021 by IFSW

Contents

| | |
|--|-----------|
| President and Secretary-General's End of Year Report | 5 |
| Award of the IFSW Andrew Mouravieff-Apostol Medal | 9 |
| World Social Work Day | 10 |
| World Conference | 12 |
| General Meeting | 16 |
| Information on the Covid-19 Pandemic | 19 |
| News from Members | 24 |
| Regions | |
| Africa | 27 |
| Asia and Pacific | 33 |
| Europe | 38 |
| Latin America and Caribbean | 44 |
| North America | 48 |
| Commissions | |
| Education | 55 |
| Ethics | 63 |
| Human Rights | 67 |
| United Nations | 71 |
| Projects and Programs | |
| 2020 to 2030 Global Agenda | 77 |
| Climate Justice Program | 79 |
| Free Online Courses | 80 |
| Study: Ethical Challenges during Covid-19 Pandemic | 83 |
| Global Standards for Social Work Education and Training | 84 |
| Partnerships | 88 |
| Publications | 89 |
| Governance | 93 |
| Upcoming Events | 94 |
| Communication | 95 |



144

National social work organisations are **Members** of IFSW

5

Regions represent IFSW around the globe

3+ mio

Social Workers are represented by IFSW

13

Members of the Global **Executive** are responsible for the strategic government of IFSW

5

Commissions are advancing the impact and visibility of IFSW

IFSW President and Secretary-General's End of Year Report

«What happened is a remarkable transformation of social work in leading change in social services»



IFSW President Silvana Martinez and
IFSW Secretary General Rory Truell

Dear colleagues, greetings to all of you. We want to start this report by acknowledging that many in parts of world social workers are under significant pressure in their continued service in the fight against the pandemic. The arrival of the COVID-19 in early 2020 prompted an unprecedented global effort by social workers to re-orientate services – to meet the needs of both existing clients and the millions of people whose lives had suddenly been thrown into turmoil by the virus. This effort was in circumstances that might, at first glance, have seemed impossible as social services are often struggle to meet basic needs. However, what happened is a remarkable transformation of social work in leading change in social services.

The rise of COVID-19 prompted social workers to be creative, to think of new

ways of making their services and values effective. It sparked a culture of transformation in service responses, which in turn helped transform lives under the most difficult of circumstances.

Being under such multiple pressures is a significant burden on social workers who are often the stable rock in people's lives. But we know that social workers are not made of stone, but flesh and emotion which can only absorb so much pressure. We remain fully committed to ensuring that IFSW continues to support social workers through global and local connection for shared-learning and solidarity.

2020 was no doubt a test on all our systems and capacities and from the feedback circulated the Federation can confidentially say that the profession has passed the tests beyond expectations. We still have a long way to go with

IFSW President and Secretary-General's End of Year Report

the pandemic, the deepening economic crisis as well as in our roles supporting families and communities and promoting social and environmental justice. But if one thing has been proved in 2020, it is that social work can rise to the challenges.

Outcomes from 2020

This report provides outline on the main global activities during 2020. This is of course supplemented by the other report throughout this document and by the weekly news reports issued by the Federation.

The Global Agenda

The early decision to cancel the IFSW world conference scheduled to take place in Canada and to replace it with an online event has proved to be a significant turning point in the culture of the Federation's operations. Going online resulted in a massive increase in participation. Normally we could expect 2500 people attending a conference whereas we achieved 20'000 registrations in July. This enabled widespread participation from across the world and included representatives to equally participate without the normal financial and visa travel restrictions. As we move forward in the future, the Federation will be committed to maintaining these barrierless events and also develop the opportunity for people to participate in face to face groups where possible.

Many of you will recall that in the closing of the IFSW online global conference, five proposed Global Agenda theme were presented which reflected the high-level discussions within the 20'000 strong multi-partner conference. We stated at that time that these proposed themes would be submitted to IASSW and ICSW who had declined to join the conference and we asked them if they could identify with the themes. A task-force comprising representatives of IASSW, ICASW and IFSW took responsibly for working through this request and to examine the separate consultation processes that each of the other organizations had also undertaken. We were delighted that IASSW and ICSW were able to see themselves within the results of the IFSW consultation. And it was agreed that the 2020 to 2030 Global Agenda Framework would be titled: Co-building Inclusive Social Transformation. Further, the first Global Agenda them to cover the years 2020 to 2022 also was promoted through our consultation: Ubuntu: Strengthening Social Solidarity and Global Connectedness.

The remaining four themes to cover the years 2022 to 2030 are still on hold as our longstanding partners need more time to consult their members. This, of course, also gives us more time to think and reflect and ensure that the Global Agenda can include every possible organization that wants to see the impact social work and its social-justice aspirations expand. We expect the remaining fours themes will

IFSW President and Secretary-General's End of Year Report

become an important point of discussion again throughout 2021.

Future World Conferences: 2022 and 2024

With concern about the risk of travel and time it may take for vaccines to be widely available, the IFSW Executive, determined that travel between regions should be avoided as the profession needs to act with maximum responsibility in ensuring the safety of social workers and the communities they work within. We, therefore, proposed to our global conference partners that the 2022 conference be planned as an online event and 2024 as a hybrid event. Our partners have agreed that 2022 will be online and discussion are proceeding regarding the arrangements for 2024.

The Executive

As we have worked through the challenges of coordinating and responding to the challenges of COVID, the culture of the Executive has also changed. The Executive now meets on a more regular basis via Zoom. This from our observation has enabled a momentum in the Executive's governance role that was not possible before when the Executive only met once a year.

In an executive meeting shortly after the General Meeting, an election took place for the position of IFSW Global Vice President. We were delighted that there were two strong nominations for the role. Rose Henderson, President of the Asia-Pacific region was successful and is subsequently the IFSW Vice President.

The Commissions

Elsewhere in the document are separate reports from each of the Commissions. We would also like to note some of their highlights in our report:

The UN Commission has formed a new partnership with 'Local 2030'. This is a UN platform that promotes collaboration and action in support of the SDGs at local levels. The partnership recognizes the important contributions that social work makes to development.

The Education Commission formally launched the new Global Standards of Social Work Education in partnership with IASSW. This initiative will have far-reaching consequences for countries where social work education falls short of meeting minimum requirements. The Commission met recently to consider ways to support social work departments to build better bridges with their national associations to support the achievement of the minimum standards. A new partnership has also been developed between IFSW and the Latin American Council for Social Sciences, and we are envisaging high levels of cooperation as we move forward in our shared vision for education to be an emancipatory process.

The Ethics Commission has collaborated with the Social Work Ethics Research Group and produced an Ethical Guideline for social workers in the context of COVID-19. The Commission has further been active in reviewing new member applicants Code of Ethics.

IFSW President and Secretary-General's End of Year Report

The Human Rights Commission has commenced a process where a number of statements will be issued on issues of concern. They are also working with the International Social Work Action Network to bring support and visibility to social workers that have been imprisoned for carrying out their professional duties.

The Indigenous Commission has asked the Executive to appoint or reappoint their regional representatives following the decision to upgrade the committee to a Commission. This process is nearly completed.

Applications for new membership

We are currently supporting applications for full membership from Barbados, Gambia, Surinam, Ethiopia and possibly the extension of Coordinating Bodies in Sri Lanka and Italy. Given the ongoing interest in joining IFSW, through the establishment of national associations, we can expect that all the world's countries will have membership in the coming decade.

Looking forward

Over the last year, the Federation has shown it placed itself well in actively responding to the COVID crisis, leading the Global Agenda processes and building new partnerships. These have all been complex processes as they have involved multiple ethnic and organizational cultures. The stable leadership of IFSW during this period has helped with reflecting on this com-

plexity and responding with successful actions. A key principle that has underpinned this approach is to treat all IFSW partner organizations equally and avoiding hierarchies of partnerships that limit or exclude others. Consequently, we envisage the continued partnership expansion that was identified as a key objective in the 2016 IFSW constitutional review.

There are, of course, many challenges ahead. The ongoing pandemic and its negative impact on the national and global economies will place a number of our members in financial uncertainty. The Executive has therefore commissioned the Secretariat to review the fees policy and examine a percentage based contribution of the fees that the IFSW organizational members receive for their members, as opposed to a set amount per member. This we feel may lead to more consistent and transparent fees paradigm which does not have different fees structures based on an old concept of national Gross Domestic Product. The Secretariat will produce some models and concepts for us all to review and consider before formally tabled a paper at the next General Meeting.

We end this report by wishing all members tremendous success in 2021 and thank you again for your many and significant contributions to the global profession.

In solidarity,
Silvana and Rory

Awards

Award of the IFSW Andrew Mouravieff-Apostol Medal to Margaret Humphreys



The International Federation of Social Workers was pleased to announce the award of the highest honour of the Federation – the Andrew Mouravieff-Apostol Medal – to Margaret Humphreys CBE, AO.

The presentation was made at the IFSW virtual General Meeting on Saturday 11 July 2020. She was nominated for the award by the social work associations in the UK (BASW), Australia (AASW) and Canada (CASW-ACTS).

The award recognises Margaret's outstanding professional career as a proud social worker and in particular her work exposing the child migrant scandal.

IFSW President, Silvana Martinez, said *'Margaret has made an outstanding contribution to international social work and she deserves our thanks'*.

IFSW Secretary-General, Rory Truell, commented: *'Margaret has always spoken proudly of her social work identity. She has constantly upheld social work values in her practice and her global campaigning. She has facilitated people to tell their own stories & supported them to shape a global campaign. She has challenged large agencies & governments to*

face up to past bad practices. She is determined to put right the wrongs of past poor practice. She lives social work values and deserves our thanks'.

BASW Chair, Gerry Nosowska, said: 'BASW is proud to have nominated Margaret for her inspirational work. She has made an international impact through her commitment to the principles of social work'.

Chair of the BASW International Committee and former IFSW President, David N Jones, drew attention to the citation submitted by BASW with support from AASW and CASW-ACTS. He referred to *'Margaret's absolute determination to achieve fairness and justice for the child migrants and their families and her outstanding use of social work skills in contact not only with the child migrants but also governments, embassies, agencies and Prime Ministers. Her professional work embodies the true characteristics of a social worker and she is a worthy recipient of this global award.'*

In reply, Margaret Humphreys thanked the three associations for the nomination and IFSW. She said: *It is an honour and I accept this award on behalf of all the child migrants and their families that have been the focus of my work since 1987...*

To see the video nomination from BASW, the IFSW presentation and Margaret Humphreys acceptance, [please click here](#).

Read the [BASW citation paper here](#).

Events

World Social Work Day

World Social Work Day in 2020 showed that the visibility and participation significantly increased throughout the past years. IFSW members celebrated the day worldwide with peaceful protests, community meetings, and advocacy strategies in their governments, etc. Members also assisted with the translation of the poster which this year included 75 languages.

Furthermore, Members of IFSW from all over the world shared their WSWD stories and images with us. .

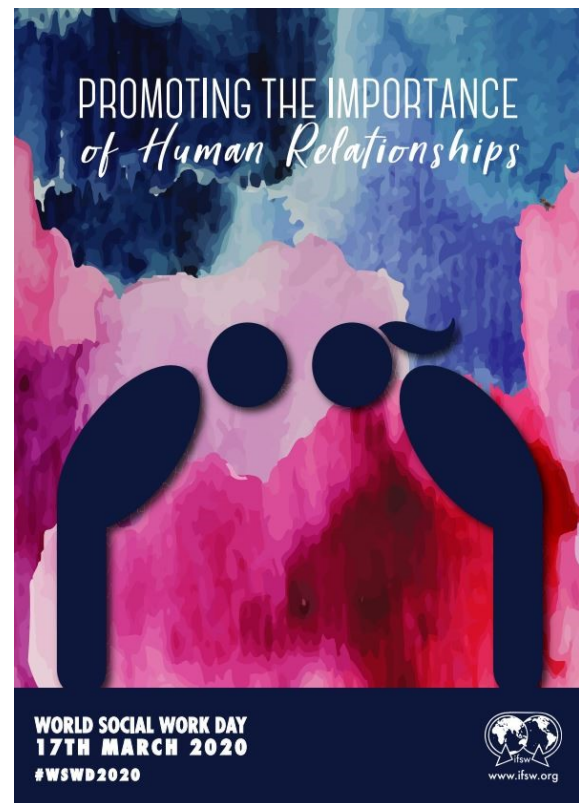
BBC World News Covers WSWD Updated Poster

BBC World News covered the updated poster as follows:

IFSW Updated the World Social Work Day Poster to reflect the practice realities under Covid 19 conditions. This news from the social work profession has reached the attention of the international media as the profession quickly and responsibly adapts to the new situation.

IFSW Secretary-General, Rory Truell commented, 'Social workers are able to work with high levels of complexity and with changing conditions. In this crisis the profession is critical in advocating that social services adapt to the conditions and remain open, offering appropriate online and telephone support systems where physical contact is not possible. This especially important for populations that are at high risk. The World Social Work Day Poster was updated as the profession adjusts at all levels and we are delighted there has been significant interest from the world media'.

[Read the article on BBC here](#)



Read more

[Click here to read more about celebrations around the globe.](#)

You may find a collage of the hash-tag #WSWD2020 on the next page.



#WSWD2020



Events

IFSW World Conference



The difficult decision to cancel the IFSW world conference scheduled to take place in Canada was to ensure that all participants remain safe in the face of Covid-19. Taking the excellent work developed in Calgary and translating this into online frameworks proved to be a significant turning point in the culture of the Federation's role in bringing people together for collaborative learning.

Going online resulted in a massive increase in participation. Normally we could expect 2500 people attending a conference whereas we achieved 20'000 registrations in July. This enabled widespread participation from 185 countries and included representatives to equally participate without the normal financial and visa travel restrictions.

The conference marked the conclusion of the two-year consultation on the 2020 to 2030 Global Agenda themes .

The consultation process was launched in 2018 to develop the next Global Agenda themes as a strategy to advance the profession's focus and impact in the coming decade. The two-year consultation commenced with a dedicated online process enabling all people to submit proposals, followed by national and regional workshops and the World Conference finale. The conference brought all parts of the social work system together: Political leaders, People who have experienced care, community leaders, educators, social service leaders and social workers from throughout the world. IFSW also welcomed new partner organizations into the leadership of the conference to strengthen the process.

The resulting IFSW themes contributing to the 2020 to 2030 Global Agenda for Social Work are:

IFSW World Conference

Valuing Social Work as an Essential Service

Realising the essential role of the social work profession to connect people, communities and systems, to co-build sustainable communities and to contribute to liveable futures.

Resourcing the profession with legal recognition, respectful working conditions, education and continuing professional development and supporting professional associations.

Co-building Inclusive Social Transformation

Co-building with people, families, communities, social movements and governments to achieve inclusive social transformation locally, nationally, regionally and globally.

Promoting participatory democracy, gender equality, action to address racism, economic sustainability and climate justice.

Ubuntu: 'I am because we are'

Nurturing relationships are central to the social work profession in all aspects of our work.

Promoting indigenous knowledge and the decolonisation of the social work profession.

Transforming Social Protections Systems

Transforming social protections systems to secure the human dignity and rights of all peoples.

Strengthening connections for security and change. Promoting harmony in relationships and a way of living between peoples, communities and mother earth.

Promoting Diversity and the Power of Joint Social Action

Celebrating the strengths of all people and their active role in leading social development.

Working together to co-design and co-build thriving communities and societies for people and the environment.

When announcing the themes, the conveners of the consultation process **Rory Truell** and **Rose Henderson** said, "*That the themes are not in an order of preference or importance – each theme is equally important and they are integrated together as a framework*" In her conference closing speech IFSW President **Silvana Martinez** said "*Never before in the 92 years history of IFSW has there been such an inclusive and democratic process. The conference enabled all people to contribute to the next Global Agenda. Without a doubt, it has been a historic and successful event*".

Events

2020 IFSW World Conference



The next stage involved working with IFSW's longstanding partners – **The International Association of Schools of Social Work** and the **International Council on Social Welfare** that had respectfully declined to be partners to the IFSW conference but continued to be engaged in the broader Global Agenda processes. IFSW formally took these outcomes to these partners in the hope that they could see themselves in and support this framework. Commenting as IFSW Secretary-General, **Rory Truell** said, "*The World Conference, which concluded the consultation strategy, confirmed the social work role in advocating that formal social protection systems need to change focus from providing services for people in crisis to becoming agencies of social transformation that prevent social crisis. The Themes Framework clearly highlights the approach of co-building and co-designing with communities along with the message that social*

work is essential for every country's economic and social development. These significant outcomes and the online platforms that enabled them will have far-reaching effects bringing forward a new era".

See the video presentations:

[Results of the conference](#)

[Closing ceremony](#)

[Movie of images during the conference](#)

Programme of the Conference

The contents of the 2020 IFSW World Conference are available here:

[Book of Abstracts](#) (PDF, 15.8Mb)

[Programme](#) (Website)

Events

2020 IFSW World Conference

20'000 Participants

By the end of the conference, 20'000 participants from 185 countries were registered.

"This is wonderful news", Rory Truell said, "The unprecedented interest highlights the profession's commitment and success in bringing together political leaders, community leaders, representatives of people whom have experienced social services, United Nations leaders with social workers worldwide. Our common task in this conference is to develop the 2020 to 2030 Global Agenda Themes that will further strengthen the profession as a key partner in transforming the social concerns of the world's communities in which we work", he continued.

In the same week, IFSW expanded its country level membership when 3 new National Associations of Social Work successfully met the criteria for admission. IFSW now comprises 144 National Associations

of Social Work or Unions representing social work. IFSW invited all the Conference participants to join the conversation in developing the Global Agenda themes and share their proposals with the presenters in the more than 300 sessions, the live panels and a key area to contribute is the Open Mic session. The Open Mic session which run 24 hours a day, provided opportunities for all participants to propose themes and discuss other people's proposals. Access the Open Mic session from the conference programme.

Partners



Conference Committee



Silvana Martinez



Rory Truell



Linda Kreitzner



Jan Christianson-Wood



Larry Alicea Rodríguez



Lola Casal-Sánchez



Pascal Rudin

Events

2020 IFSW General Meeting



'The International Federation of Social Workers General Meeting, which closed on Monday 13 July 2020, demonstrated the ability of social workers to create triumph out of adversity', said Silvana Martinez, President of IFSW. The General Meeting ran as an online process starting on Saturday 11 July 08.00 UTC concluding on Monday 13 July 22.00 UTC.

The meeting involved 226 members from 91 countries resulting in the largest and most inclusive General Meeting in the history of the Federation. 'Delegates adapted quickly to this new form of General Meeting', said IFSW Secretary-General Rory Truell. There was an impressive range of comments and lively debate on key policy issues. The sense of professional commitment and unity was highly visible and

demonstrated the power of good relationships and the vitality of social work', he concluded.

The outcomes of this General Meeting leave the Federation in a really strong position to advocate with even more determination for social justice and the recognition of social workers in all countries', said Silvana Martinez.

Outcomes of elections for the executive

Silvana Martinez welcomed the following people onto The IFSW Global Executive:

- Sriganesh M V, Vice-President Asia-Pacific

Events

2020 IFSW General Meeting

- Mildred Joyner, Regional President North American
- Joan Davis-Whelan, Regional Vice President North American
- Victor Ivan Garcia-Toro, Treasurer (Re-elected)
- Noel Muridzo, Regional President Africa (Re-elected)
- Tania Maria Ramos, Regional Vice President Latin American and the Caribbean (Re-elected)
- Ana Radulescu, Regional President Europe (Re-elected)

They join the existing members of the Executive who continue to serve for a further two years until the next General Meeting:

- Joachim Mumba, Regional Vice President, Africa Region
- Rose Henderson, Regional President Asia-Pacific
- John Brennan, Regional Vice President Europe
- Larry Emil Alicea Rodríguez, Regional President Latin American and the Caribbean

Silvana Martinez thanked the outgoing executive members:

Kathy Wehrmann, Regional Vice President, North America, Jan Christianson-Wood, Regional President North America and Irene Leung, Vice President, Asia-Pacific

President Martinez further thanked all the nominees who stood in this election for

their contribution to the democratic process and their commitment to IFSW: Abu Mansaray (George), Irene Leung and Liu Jing.

IFSW Education Commission formalised

The General Meeting decided to formalise the Education Commission as a permanent structure to advise the Executive and Federation on matters concerning qualifications of social workers and standards of education and training and to develop partnerships with educational networks to enhance the quality of social work education.

The Commission has worked in collaboration with the International Association of Schools of Social Work over the past two years to revise the joint statement of Global Standards for Social Work Education and Training. The revised statement was endorsed by the General Meeting ([Link](#)) and sets out minimum standards for social work education programmes as well as aspirational measures to support the achievement of high academic and professional outcomes.

2020 IFSW General Meeting

Establishment of an Indigenous Commission within the structure of IFSW

The General Meeting decided to establish a permanent Indigenous Commission to ensure that the contributions of indigenous social workers are recognised across the Federation. 'This new Commission will strengthen the voice of indigenous social workers within the Federation', said Rory Truell, IFSW Secretary-General, 'and will help IFSW to learn from indigenous knowledges as well as enabling the Federation to address the profession's histories where indigenous rights were denied.'

New members were welcomed

National social worker organisations from the following countries were welcomed into formal membership of IFSW:

- Republic of the Congo – National Association of Social Workers of the Republic of Congo.
- Jordan – Jordan Association for Social Work
- Mexico – National Federation of Mexican Collegium of Social Work

These countries join a global Federation now comprising 144 Members.

Social work and the United Nation's Sustainable Development Goals (SDGs)

The Meeting reaffirmed its commitment to the SDGs. It was agreed that a policy paper will be facilitated by the executive to highlight the essential role of social workers in fulfilling social development goals and supporting multilateral partnerships.

Concluding Remarks

At the successful conclusion of this historic online Meeting, Silvana Martinez and Rory Truell commented: "The profession has achieved big leaps forward in this General Meeting. The online environment enabling all our members to participate has shown that we have the ability to overcome timezone and language challenges as well as building a more inclusive democratic decision-making process".

Further Information

To read more about IFSW General Meetings, please visit our [General Meeting info hub](#) on the website.

Information on the Covid-19 Pandemic



In many countries social workers were and continue supporting communities that are affected or fearful of the Covid-19 Virus. Social work has an essential frontline role in the fight against the spread of the virus through supporting communities protect themselves and others through physical distancing and social solidarity.

Key functions of social work at this time included and continue to include:

- ensuring that the most vulnerable are included in planning and response.
- organizing communities to ensure that essentials such as food and clean water are available.
- advocating within social services and in policy environments that services adapt, remain open and pro-active in supporting communities and vulnerable populations.
- facilitating physical distancing and social solidarity.
- as a profession, advocating for the advancement and strengthening of health and social services as an essential protection against the virus, inequality and the consequent social and economic challenges.

Official IFSW statements relating to Covid-19

10 November: Practising During Pandemic Conditions. Ethical Guidance for Social Workers

[Link to statement](#)

4 November: To the Top of the Cliff: How social work changed with COVID-19

[Link to statement](#)

1 July: The Social Work Response to COVID-19 – Six Months On: Championing changes in services and preparing for long-term consequences

[Link to statement](#)

Information on the Covid-19 Pandemic

19 May: COVID-19: the struggle, success and expansion of social work – Rory Truell reflects on the profession's global response, five months. [English](#) | [Spanish](#)

22 April: Weekly Report From IFSW On The Social Work Response To COVID-19: Number 5

[English](#) | [Spanish](#)

9 April: Femicides: When you live with the murderer. A reading in times of Compulsory Social Isolation

[Link to statement](#)

8 April: It is the time to replace models of nationalism and charity with new global ethical foundations: What the World Can Learn from International Social Work

[Link to statement](#)

7 April: Ethical Decision-making in the face of COVID-19

[English](#) | [Spanish](#)

1 April: Social Work Responds to Covid 19 – Report 3

[Link to statement](#)

30 March: Humanitarian request to telecommunication business owners

[English](#) | [Spanish](#)

26 March: As social workers work through the Covid 19 crisis we work towards a better world

[Link to statement](#)

21 March: Secretary-General report on the Social Work Response: [Link to video](#)

11 March: Statement on IFSW & Covid-19

[Link to statement](#)

1 March: Update on the Corona Virus for IFSW Members

[Link to statement](#)

Articles by members

ASEAN COUNTRIES

Social workers in Aseanic countries respond to covid-19 pandemic

[Link to article](#)

AUSTRALIA

Australian Social workers respond to the Pandemic

[Link to article](#)

CHINA



Social workers actively engaged in the fight against the corona virus

[Link to article](#)

CZECH REPUBLIC

Declaration of the society of social workers on Covid-19

[Link to article](#)

Statement by the association of social workers of the Czech Republic COVID-19

[Link to article](#)

Information on the Covid-19 Pandemic

CHILE

Social workers declaration on Covid-19

[Link to article](#)

DEMOCRATIC REPUBLIC OF CONGO.

Report of the 'SAP' proximity action strategy activity for the fight against Covid-19

[Link to article](#)

EL SALVADOR

Statement of the association of workers and social workers on the pandemic

[Link to article](#)

GHANA

Ghanian Association calls its members to support the government-initiated measures against Covid-19

[Link to article](#)

GERMANY

Social workers work with food banks "a warm soup in the morning against the cold of the night"

[Link to article](#)

HUNGARY

Open letter to prime minister to support social workers during Covid-19

[Link to article](#)

INDONESIA

Social Work action in response to Covid-19

[Link to article](#)

Update on response to the Covid-19 pandemic

[Link to article](#)

INDIA

One day – one donor covid-19 programme

[Link to article](#)

ITALY

Italian social workers share experiences on the pandemic

[Link to article](#)

Professionals thanks the IFSW for their support during covid-19

[Link to article](#)

IRAN



Social workers share report on the pandemic

[Link to article](#)

Iranian social workers research on the pandemic

[Link to article](#)

Social workers call for lifting the trade sanctions on medical supplies

[Link to article](#)

ISRAEL

Social workers promote international learning from the corona pandemic

[Link to article](#)

Information on the Covid-19 Pandemic

LUXEMBOURG

ANASIG statement on the covid19 crisis

[Link to article](#)

MALAWI

Social workers statement on the covid [Link to article](#)

NEW ZEALAND

New Zealand social workers respond to corona virus pandemic

[Link to article](#)

NEPAL

Provision of tele socio-psychological counselling during the pandemic

[Link to article](#)

NIGERIA

Call for sober reflections and calmness during the pandemic

[Link to article](#)

NORWAY

Norwegian union of social workers respond to covid-19 pandemic

[Link to article](#)

PHILIPPINES

Philippines responds to the corona virus

[Link to article](#)

The campaign to connect with respect

[Link to article](#)

POLAND

The uncertain fate of changes for social workers practice

[Link to article](#)

PUERTO RICO

Social workers ask for social "task force" to address crisis

[Link to article](#)

ROMANIA

Social workers fight the pandemic

[Link to article](#)

ASPROAS asks the government of Romania for financial compensation for social assistance staff forced to isolate themselves at work

[Link to article](#)

SLOVAKIA

Slovakia open letter to thank you all social workers

[Link to article](#)

SOUTH KOREA



Sharing social work activities to intervene during covid-19

[Link to article](#)

Report on social work and the corona virus

[Link to article](#)

Social workers share their experience in fighting COVID-19

[Link to article](#)

Information on the Covid-19 Pandemic

SPAIN

Campaign on the responsibility and intervention of social workers in the fight against Covid19

[Link to article](#)

SWEDEN

Supporting social workers in times of covid-19

[Link to article](#)

TANZANIA



Social workers respond to covid-19

[Link to article](#)

UNITED KINGDOM

Social workers open letter to Prime Minister to support their service

[Link to article](#)

UGANDA

Social workers urged on psychosocial support

[Link to article](#)

YEMEN

The working paper about the role of social work to confront of COVID-19

[Link to article](#)

ZAMBIA

Social workers ready to response to COVID-19

[Link to article](#)

ZIMBABWE

Call social workers and the world to unite and escalate the fight

[Link to article](#)

Articles by individuals

There are currently almost 40 articles submitted by individuals which may be found on our [Covid-19 info hub](#).

Please note that these articles may not necessarily represent the view of IFSW or its members. If you like to submit an article, please do so by sending it to global@ifsw.org.

Members

News From Members

Austria



Social Workers In Austria Went On Strike Demanding A Reduction Of Working Hours To 35-Hour/Week To Prevent Burnout

[Link to article](#)

Belarus

Belarus Association Of Social Workers Calls For The Respect Of The Principles Of Humanity And Social Justice

[Link to article](#)

Democratic Republic Congo



NASW-DRC Are Working In Uvira , Located In The South-Kivu Region Of The DRC, Which Has Recently Sustained Heavy Rains.

[Link to article](#)

Germany



Network "Social Work In German-Speaking Regions And Amongst German-Speaking Minorities"

[Link to article](#)

Ireland

Irish Association Of Social Workers Statement On Racism

[Link to article](#)

The Liaison Social Work Role In Nursing Homes And Residential Settings: A Model For Practice

[Link to article](#)

Cambodia, Japan, Sri Lanka



International Workshop On Strengthening Families: Role Of Social Workers

[Link to article](#)

Members

News From Members

Lebanon



Social Workers In Lebanon Respond After Explosion

[Link to article](#)

USA



NASW Statement: Trump Administration's Proposed Mass Raids On Migrant Families Misguided, Harmful

[Link to article](#)

Morocco, The Netherlands



Twinning As A Concept To Cooperate – The Moroccan-Dutch Case

[Link to article](#)

Zimbabwe

Zimbabwe Social Workers: International Women's Day

[Link to article](#)

Find more news on our Information Hub

On the IFSW Information Hub Search, you may find more news from Members, as well as all other content of our website.

You may use filters, such as information type, topic, region, language and commission to narrow down your search. [Click here](#) to access our Information Hub.

Canada, USA

Social Workers: We See You - Joint Statement Of Solidarity

[Link to article](#)

Join and become an IFSW Friend today!

Anyone can join as a Friend of IFSW. Friends join to show their support for international social work and to become of a world-wide community. As a Friend of IFSW you receive:

- Free online access to the journal: International Social Work (ISW) published by Sage publications. You will be able to access all the articles in the journals dating back to January 1959.
- Advance access to all IFSW publications at reduced cost.
- Discounted conference registration fees (whenever possible).
- The opportunity to create and/or participate in international, regional or local social work or social justice campaigns.
- The certificate of 'IFSW Friends Status' membership



Individual Friend membership

\$50 for 1 year

SIGN UP NOW



Student Friend membership

\$25 for 1 year

SIGN UP NOW



Life Friend membership

\$600

SIGN UP NOW



Organisational Friend membership

\$1000 for 1 year

SIGN UP NOW

Regions

IFSW Africa



Introduction

The IFSW Africa region report is a summary of activities implemented in the during the period under reporting. The report gives a brief picture about membership to the federation in the region and also highlights achievements, good practices as well as challenges during the period July 2018 – June 2020. It also outlines a summary of strategic activities and initiatives the regions seek to prioritise between now and June 2022. The vision for IFSW African Leadership is to grow the profession through strengthening of National Associations, enhancing the visibility of African social workers within the region and at the global level as well as deliberate engagements with region political and economic blocs such as AU, ECOWAS, SADC, EAC etc. The report ends with a concluding statement.

Members

- The region now comprises of 27 IFSW members who are working toward ensuring that the profession is recognised. (14 active members i.e. Botswana, Burundi, Rwanda, Egypt, Ghana, Kenya, Tanzania, Zambia, Malawi, Nigeria, Sierra Leone, Uganda, Zimbabwe, Guinea, Democratic Republic of Congo and Morocco)
- New Members: 01 Democratic Republic of Congo
- New Applications: there are no new applications yet except for Mozambique, the Gambia, Ethiopia, Togo and Ivory Coast who have expressed interest to join IFSW

Regions

IFSW Africa

Activities and Achievements during the period in the Region

During the period under review, IFSW Africa Region galvanized national associations in the region to work in collaboration with their respective governments and other key stakeholders to respond to COVID-19 pandemic. Most national associations within the region mobilized social workers to work on voluntary basis to support families and children affected by COVID-19 pandemic. Some social workers were supported by respective national associations to effectively respond to the pandemic within the agency they practice through professional support on how to deal with ethical dilemmas amidst COVID-19 response as well as how to manage own stress and burnout. Individual country campaign and share social work stories in the media.

In collaboration with other stakeholders such as UNICEF, Global Social Service Workforce Alliance and the Alliance for Child Protection in Humanitarian Action, IFSW Africa region contributed to the development of the Guidance note for care and protection of the social service workforce amid COVID-19. The guidance note was shared to all the member Associations.

The IFSW Africa Region embarked on a using social media to share best practices and experiences of difference countries social work responses to COVID 19.

Respective National Associations were encouraged to share narrative reports about their activities, lessons and challenges in terms of social work response to COVID-19. In collaboration with Children and Families International Foundation, IFSW Africa Region hosted 6 zoom webinar conversation series dubbed Social workers responds to COVID-19. The conversations which featured a number of social work practitioners selected from different member countries were streamed live on the IFSW global Facebook page with over 12,000 views globally. The Regional also initiated webinar series in French and was considering to initiate one for Portuguese speaking countries in Africa. It is evident from the feedback received so far that webinar conversations have yielded positive impact and contributed immensely in raising the voices of African social workers' whilst affording them platform to tell their social work practice stories.

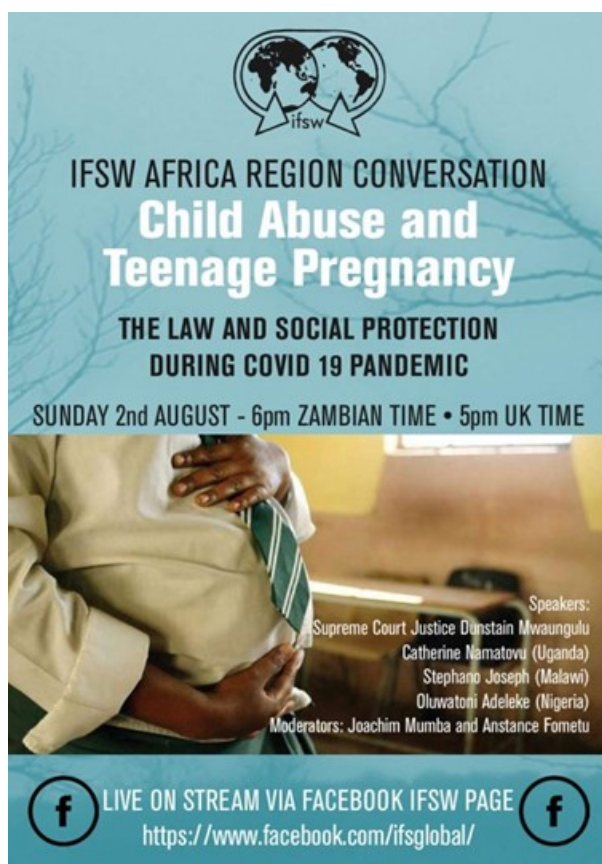


As a response to COVID-19, members of the National Association of Social Workers in Uganda were incorporated in the national technical team that developed guidelines and tools for the operations rese-

Regions

IFSW Africa

arch, sharing of new knowledge to influence policy and facilitate program learning and adaptation in regard to COVID-19 prevention and response. Our member in Uganda just as Tanzania, empowered frontline service providers that included social workers, para-social workers, volunteers and community gate keepers with information for on-going prevention and response to COVID-19 pandemic.



During the period under review, Kenya hosted the East African young careers conference which takes place every two years. The conference brought together a number of young careers from the East

African communities namely Kenya, Rwanda, Uganda and Tanzania as well as Malawi. Young Careers from the UK and Canada joined in through live stream to share their experiences.

IFSW Africa Region notes that during the period under review, a number of national associations were involved with programmes in correctional facilities. Kenya for example worked on the ex-prisoner reunification and community awareness raising programmes with families and the community. This was done in collaboration with religious institutions and community awareness program. On the other hand, the association in the Democratic Republic of Congo provided food and counselling services to women and youth prisoners.

During the period under review, the Association in Zambia worked in partnership with UNICEF Zambia and the Government Ministry of Community Development and Social Services to implement a project dubbed "Service Efficiency and Effectiveness for Vulnerable Children and Adolescents (SEEVCA)". The project was aimed at supporting the Government in 15 Districts through secondment of Social Workers to strengthen local level case management system for Vulnerable Children and Adolescents through building capacities of community volunteers and para-social workers to identify vulnerable children and adolescents, assess their needs and link them to available services. On the other hand, the association in Burundi, embarked on a project to promote

Regions

IFSW Africa

Zero tolerance for teen pregnancy in schools. NASW Burundi embarked on sensitization campaigns in selected schools to reduce school drop out of girls due to child pregnancies. In order to enhance sustainability and effectiveness of the project, small groups of peer educators were established in every target school.

The region also notes that a number of social workers in respective member countries took part in responding to poverty reduction initiatives and humanitarian crisis situations such as floods in Burundi, Kenya and the Democratic Republic of Congo. Social workers have also responded to the effects of Cyclone Ida that hit the countries of Zimbabwe, Malawi and Mozambique. Due to the fact that most countries in Africa are resource constrained and that social workers are not adequately prepared to respond to huge natural disaster such as foods, cyclones and pandemic, the regions appeals for cross learning and sharing of skills and knowledge with country members that have experience responding to such humanitarian disasters.

IFSW Africa Region has been encouraging its members to uphold constitutionalism and ensure they hold elections within national association. During the period under review, a number of National Associations reported to have democratically held elections for their respective national associations and these include, Nigeria, Zambia, Zimbabwe, Botswana, Ghana, Tanzania, Malawi and Uganda. As a strategy of strengthening national associations, IFSW

Africa envisages to invest in building capacities of national associations in setting up Governance and financial management systems and the holding of elections is testimony for good governance as well as demonstration that national associations are moving on a self-sustaining and good governance trajectory.



It was evident across Africa that social work is not considered as a profession and given due recognition just as the legal profession, medical practitioners, teachers, engineers etc. during the period under review, there has been a big movement within our member associations to seek legal recognition of social work as a profession. A number of countries such as Zambia, Tanzania, Malawi, Uganda and Kenya have initiated efforts of drafting pieces of legislation meant for the recognition of social work as a profession. It can be confirmed that at a time of reporting, there were only three countries in the region with laws recognizing social work as a profession i.e. South Africa, Namibia and Zimbabwe. Those countries that have commenced the process of pushing for the enactment of social work legislation currently at different stages. IFSW Africa is convinced that for as long as Governments in Africa do not recognize social work as a

Regions

IFSW Africa

profession, social workers in the region will continue being subjected to low pay and that most countries will continue sidelining social workers even on issues where the skills of social workers matter and should be valued. As part of the efforts to “Professionalize of Social Work in Malawi”, the national association held its 2nd national conference with guest speakers from within the region and the UK.

IFSW Africa region commends national associations that have moved with the regional strategic direction of fostering partnerships within country settings. National Associations were being encouraged to work in close collaboration with their national governments, UN agencies, Non-Governmental organizations as well as other key stakeholders in social service provision. It was evident that the success of the IFSW Africa Region conference hosted by our member, National Association of Social Workers-Uganda was largely due to the creation of strategic partnerships with different role players. The successful hosting of the International Federation of Social Workers (IFSW) Africa Region Conference from 28th – 31st October 2019 in Kampala, Uganda is testimony that efforts to foster strategic alliances always yields better outcomes. The conference which saw the participation of well over 400 delegates from 23 countries from Africa and across the globe was held under the theme: “Strengthening Human Relations for Social, Economic & Political Transformation”. The conference commenced with a

youth forum as a preconference activity with the view of not leaving anyone behind. Participants to the conference included the IFSW Global President – Dr. Silvana Martinez, Immediate past President for IFSW Global – Ruth Stark, Dr. Rory Truell – IFSW Secretary General and Dr. Angelo McClain – Chief Executive Officer for NASW – USA

During the period under review, national associations within the region commemorated World Social Work Day. IFSW Africa region, facilitated sharing of pictures and key messages for respective countries world social work day commemoration through the Regional WhatsApp group and the IFSW Africa Facebook page. The idea was to encourage cross learning and collaboration within the region.

Challenges in the Region

Most national associations in Africa face challenges of lack of office space and equipment

Lack of financial resources (limited fundraising ventures with dependent on meagre membership subscription fees). This affects national Associations capacity to remit annual subscription fees to IFSW.

Lack of legal recognise social work as a profession in most countries

Lack of resources at Regional level to support strengthening of our member associations

The outbreak of COVID-19 pandemic destabilised most of the planned activities

Regions

IFSW Africa

including commemoration of World Social Work day which is usually used as platform for advocacy and engagement with Government of policy influence.

The changing face of social work as both as a profession and an integral part of civil society activism.

Social Work is not recognized or respected as a profession in many countries in Africa and as such social workers are oftentimes looked at as volunteers only needed for distributing handouts.

Lack of standardization of social work training curriculum in most countries in Africa remains a going concern and this negatively impacts on the quality of practice.

Key Planned Activities and Events

- 2021 IFSW AFRICA REGIONAL CONFERENCE to be hosted by Rwanda. The conference expectations are to enhance existing linkages, build new partnerships and collaborations as well as serve as a platform for sharing our social work practice stories and skills development for social work practitioners in Africa
- Continue hosting webinars to activate the voices of social workers in the region to tell and document their practice stories
- Provide capacity building support to national associations within the region for purposes of strengthening in the

area of governance, setting up of organisational financial systems, resource mobilisation strategy and partnership creation strategy

- Engage with Regional and national political and economic bodies such as the AU, ECOWAS, SADC, EAC etc for purposes of policy influence
- Engage Portuguese and French Speaking Countries to Join the IFSW family

Conclusion

IFSW Africa region is indebted to its member associations for their commitment to the cause of growing the profession in Africa. We would also like to remember social workers who lost their lives whilst working on the frontline responding to COVID-19. Our hearts and prayers are with the family of STÉPHANE DIMOKIE SHABANTU from the Democratic Republic of Congo who died on June 7, 2020 to COVID-19. May his Soul Rest in Endless Peace.

Noel Muridzo, Regional President IFSW Africa and Joachim Cuthbert Mumba, Regional Vice President IFSW Africa

News and Statements

Please [click here](#) to read the latest news and statements of the IFSW Africa Region

IFSW Asia and Pacific



Introduction

As we prepare this report for our General Meeting in 2020, we are mindful that the world we knew at the time of our last meeting in India during September 2019 is forever changed as we face unprecedented changes and challenges across the globe. We acknowledge those of you who have lost colleagues, friends or family as a result of the global pandemic the world is currently experiencing. For social workers today, these are the most significant times of change we have collectively faced and responded to globally in our recent history. We are in awe and immensely proud of the way our profession has united, faced and responded to the challenges be that adapting the way we work with the people in our communities, adapting the way we have used teaching modalities with our students or adapting the way social service providers have enabled social services to continue being delivered. We have embraced the use of digital technologies not only to enable services and education to continue at a local level

but also used these to generously share with each other our practice wisdom nationally, regionally and globally. We are undoubtedly stronger and more united as a result and we now have the opportunity to further build this solidarity and strengthen our professional connections as we enter the post-pandemic era.

IFSW Asia Pacific Regional Conference 2019

Looking back over the time since our last General Meeting, the regional highlight was undoubtedly our regional conference in India. From 17 - 20 September 2019, members of the social work profession gathered in Bengaluru India to attend our 25th Asia Pacific Joint IFSW Asia Pacific and APASWE Regional Social Work Conference, for the first time ever in India. The day before the Conference delegates were able to attend two pre-conference workshops - 'Indigeneity in Asia and Pacific Social Work' and 'The Role of Social Workers working with Female Domestic Workers Crossing National Borders' held at CHRIST (Deemed to be University). Follo-

Regions

IFSW Asia and Pacific

wing the conclusion of the workshop's students from CHRIST (Deemed to be University) delivered a very scintillating cultural programme and the eventful day ended with a welcome dinner at the venue. The Conference from 18 – 20 September was hosted by the India Network of Professional Social Workers' Associations (INPSWA) in collaboration with Dept. of Psychiatric Social Work, NIMHANS and Dept. of Sociology & Social Work, CHRIST (Deemed to be University) with the theme of 'Social Work Partnerships towards an Equal Society-Asia Pacific Perspective'. The Conference sub themes were formulated based on current global and local social scenarios of concern and which needed to be visualised within the framework of 'Inclusive Partnerships and Equality'. The 10 sub themes were : Social Work Partnerships, Social Development, Protection and Promotion of Human Rights, Green Social Work, Cultural Diversity and Social Work, Social Policy – Programmes for Public Reach; Children, Youth, Women and Elderly, Correctional Social Work, Health & Wellbeing, and Corporate Social Responsibility & Industrial Social Work.

The conference attended by 531 delegates (165 foreign delegates from 31 countries & 366 delegates from India) appreciated a number of inspirational keynote addresses, 213 oral presentations, 68 e-presentations and 57 poster presentations on the various sub themes. Delegates very much enjoyed the wonderful hospitality of our hosts, valued the many opportunities for engaging in the various professional

development opportunities including the informal networking with colleagues from across our region and the globe. As we concluded our gathering, Dr Rory G Truell, Secretary General, IFSW facilitated a 'group selfie' to capture delegate's solidarity with social work colleagues across the world, in the collective action on climate change.



The APSWC 2019 event undoubtedly fulfilled the objective of enabling exchange and sharing of experiences, ideas, challenges, methods, and successful innovative social work interventions in addition to providing an ideal platform to network with peer professionals, experience the local culture & cuisine and hospitality, discern & live through a glimpse of 'Incredible India' from close quarters. A huge thanks to all presenters, speakers and participants at both the preconference workshops and the Conference for the sharing and learning that was provided. Very sincere thanks also for the enormous amount of work undertaken by the hosts, organisers and many volunteers involved in making this gathering such a success. Whilst in India we also held a regional meeting to attend to our regular business. Included in this was an acknowledgement of our longstanding treasurer Michiko Hirata

Regions

IFSW Asia and Pacific

who not only expertly looked after our financial affairs but also very ably coordinated our pre-conference workshops for many years. A huge thanks to all the work Michiko has undertaken to enhance our region and a warm welcome to Machiko Ohara as our new treasurer. We also confirmed Teoh Ai Hua as our secretary following Irene Leung's election as our regional Vice-president.



Global Agenda 2018-19

Whilst in India, a joint IFSW Asia Pacific and APASWE global agenda workshop was held showcasing how members across our region celebrated the fourth pillar "The Importance of Human Relationships". A broad range of perspectives were presented demonstrating the myriad of ways this theme applied to the profession across Asia Pacific. Following on from this our regional vice-president, Irene Leung together with Viktor Virag from APASWE completed the Asia Pacific chapter for the global publication of this theme due to be released in July 2020. My thanks to all of you who contributed at this workshop and especially to Irene for collating these and co-producing our regional chapter.

Covid -19 Further to the above, we specifically acknowledge our colleagues in the China Association of Social Workers (CASW) for their early sharing of their experiences and strategies in dealing with Covid-19 from early 2020. As the rest of the world began experiencing the spread of the virus CASW was the first to provide information on how they had adapted their services. In the months since we acknowledge the many contributions from across all parts of our region that have been shared and posted on the IFSW website as we collectively grow our practice wisdom and share this with others in the spirit of supporting each other in these unprecedented times. Whilst the massive health and wellbeing impact of this virus has been devastating, the global financial impact continues to unfold and will undoubtedly be with us for many years to come. This is likely to pose significant challenges where some governments seek to reduce social protection systems and social service provision at the very time when the need for these is heightened. It is even more important that we maintain our connections and support of each other in the coming months and years.

We are also aware that many members have hosted a range of webinars and zoom meetings, education sessions and even national conferences in the months since 'lockdown', 'flattening the curve' and 'virtual meetings' have become part of our everyday language. Again, we acknowledge the way the social work profession has turned the challenging times into op-

Regions

IFSW Asia and Pacific

opportunities to utilise new technologies to enable essential services and new learnings to continue. Social work has led the way in progressing these alternative ways of working and IFSW Asia Pacific was the first region to use the IFSW Zoom platform for a regional executive committee meeting!



Black Lives Matter

As we write this report a second global movement – ‘Black Lives Matter’ – is gaining momentum. Again, members of our profession are taking a leading role speaking out against the injustice of racial discrimination and the atrocities of the killing of black citizens by Police in the United States of America. It is very disturbing to witness and be a part of these global movements but at the same time heartening to use these as a catalyst to examine what institutional, personal and professional, conscious or unconscious biases occur in our own countries and contexts in order that they can be identified and addressed locally, nationally and globally. We look forward to a much better future if this momentum translates to real change in our communities.

General Meeting 2020 and IFSW Conference 2020

As we all prepare for a new way of engaging in the Business of the General Meeting we encourage you all to link in and participate in the discussion, decision-making and voting in our regional elections. It may take some time to get used to the new ways of undertaking the work of the General Meeting using virtual technology but the IFSW global secretariat are providing assistance in learning how to access and participate in this forum prior to the event – please contact them before the meeting for assistance. On the other hand, using this format will enable access to this meeting for those for whom physically attending is not possible because of cost or other logistical reasons and we are looking forward to a wide range of active participation from our members. The Conference 2020 is now also being held virtually with a focus on the future of the Global Agenda. We acknowledge the hosts of the planned event in Calgary and all the work they had undertaken leading up to the difficult decision that had to be taken to cancel the face to face event. We were very much looking forward to joining you in Canada and appreciate your very real sense of loss at not being able to progress the hosting of this as had been hoped. However we also hope that being able to link into the website and hear the presentations, ask questions and participate in the global discussions relating to the future of the global agenda will provide a wide range of perspectives – including

Regions

IFSW Asia and Pacific

those unable to do so previously – to actively participate in this ‘leading edge’ global event.

Regional Conference 2021

At this time planning for our joint Regional Conference in Brisbane is proceeding with a planned time for late 2021. The Australian Association of Social Workers will keep us posted on plans as they progress and we very much look forward to gathering again post Covid-19 to celebrate our achievements, the many learnings of our experiences and the development of a ‘new normal’.

Representatives

The work of the region continues to grow and expand with the increased representation on the various Commissions and the ongoing development of portfolio holders for specific purposes.

Executive Committee:

Regional President: Rose Henderson;
Regional Vice – President: Irene Leung;
Regional Secretary: Teoh Ai Hua;
Regional Treasurer: Machiko O’Hara;
Immediate Past President: Mariko Kimura;
Publications Officer: Gary Xia

Portfolio:

IFSW Asia Pacific Regional Conference 2021 Liaison: TBC

IFSW Asia Pacific Representative on IFSW Indigenous Committee: Linda Ford

IFSW Asia Pacific Regional Development Officer (JFSW): (TBC)

Commissions:

Regional representatives of the Interim Education Commission: Karen Healy (Australia) and Mariko Kimura (Japan)

Regional representatives of the Human Right Commission: Raed Amira (Palestine) and Luis Arevalo (New Zealand)

Regional representatives of the Ethics Commission: Teoh Ai Hua (Malaysia) and Hassan Mousavi Chelak (Iran)

Regional representatives of the United Nations Commission: Kae Kotbungkair, Regional Commissioner, Thailand

Yolanda Wang (China); Sup Pyo Kim (South Korea); Sebastian Cordoba (Australia); Jude Douglas (New Zealand); Suresh Pathare (India), Hamed Olamee (Iran)

Very sincere thanks to all of you for your ongoing commitment to the roles you have taken up, including participation in meetings, completion of reports and undertaking the tasks assigned. The involvement of a wide range of perspectives from across our region in these roles has ensured our culturally and linguistically rich and diverse region is well represented in both our regional and global work and I sincerely appreciate the willingness of you all to contribute your time and expertise for our profession. I especially thank those on the Executive committee for their ongoing work.

***Rose Henderson**, Regional President IFSW Asia and Pacific and **Irene Leung**, Regional Vice President IFSW Asia and Pacific*

Regions

IFSW Europe



Introduction

This report related to the IFSW Europe's activities include the years 2018-2020 and includes the time before the global coronavirus (COVID-19) pandemic. The visibility and the voice of social workers in Europe, as well as contribution to the policy actions have evolved substantially since that point. 2018-2019 in Europe marked the 100th anniversary of one of our oldest members of IFSW. The association of social workers in Austria (OBDS) celebrated 100 years. Social workers and our partners celebrated this important milestone in Vienna during the IFSW European Conference 2019. This year, BASW is celebrating 50th years anniversary and we planned a conference in Birmingham which has to be cancel. Nevertheless, we organised an online event and gather social workers in Europe in the virtual space to thanks BASW for their involvement in

the development of the social work profession and the investment in IFSW Europe. Unfortunately, in January 31, 2020 the UK formally leaves the EU political structures. This reality has significant implications for social work and for people in UK, some of which are still unknown. As part of our policy assessment process, IFSW Europe contributed and fully endorses the EAPN recommendations to urgently revise the 2020 CSRs to prioritise urgent direct support to people (not just economic support to companies and markets) and to reinforce quality public health and social care services. COVID-19 has had a swift and devastating impact as an immediate health crisis and unexpected disruptions to the way we live and work. In order to help people to be resilient and answer the needs, social workers in Europe changed the professional practice as we know it and rises to the challenges of COVID-19. IFSW Europe accompanied and provided

IFSW Europe

the necessary space for knowledge sharing for social workers in Europe to build up resilience and to come out stronger of this challenging and uncertain time. We are now striving to adjust and to create our new reality of living as we move forward.

IFSW Europe continue its efforts to make the voice of social workers heard. IFSW Europe increased the visibility and endorsed the requests of our member organisation to their national Parliament and Government. IFSW Europe continues to study carefully the impact of COVID-19 on the social services and social work profession. IFSW Europe underlines that the COVID19 pandemic must bring about a rethink on the place of public health, social services and social protection systems in all countries of Europe based on the principle that people really do matter more than anything else – the social must balance the economic. Since the last IFSW General Assembly, Ana Lima stepped down from her role as the European regional President on her appointment in the Spanish government. We congratulate her on this achievement. Ana Radulescu, then the European Regional Vice-President stepped into the role of President and in the subsequent election for a new Vice-President, John Brennan was elected. A big thank you to those who served on the Regional Executive in these past two years. IFSW Europe had five main priorities for actions:

1. Strengthening the national associations of social workers and to uphold the of social worker contribution to the decision-making process at their national level.

IFSW Europe became active in supporting and endorsing our members in their activity at the national level and make their activity visible at the European level. Examples of activities of our members in relation to national governments, activities that were supported by IFSW Europe:

1. Open Letter to Prime Minister to Support Social Workers during Covid19 in Hungary (June 2020);
2. Danish Association of Social Worker Message to the Government (June 2020);
3. Romanian social workers ask the government for financial compensation for social workers and the staff of social services forced to isolate themselves at work (April 2020);
4. Open letter to Prime Minister to support social workers in UK (April 2020);
5. Letter sent to the Prime Minister Boris Johnson and to the Taoiseach Leo Varadkar by IFSW Europe To Support The colleagues from UK and Ireland in their fight against Brexit (November 2019);

Examples of activities of our members that were supported by IFSW Europe Social Workers:

1. In Austria social workers went on strike demanding a reduction of working

Regions

IFSW Europe

hours to 35- hour/week to prevent burnout⁶ (February 2020) 2

2. Social Workers from Bulgaria on Strike For “Education — Salary — Respect” (November 2019)
3. Eurasia Forum as a Mechanism of International Cooperation (November 2019)
4. Social Workers from Armenia are celebrating a milestone in the development of the social work profession and services (November 2019)
5. 1st International Conference of Social Work in Greece: “Social Deprivation, Child Protection and Human Rights¹⁰ (November 2019)
6. Call to Action – Proper Public Funds for Social Services In Poland (July 2019)
7. Social workers behind the front lines providing solutions for internally displaced persons¹² (April 2019)
8. First international social work congress in Siberia (January, 2019) 9
9. International conference on child development accounts held in Baku, Azerbaijan¹⁴ (November 2018)
10. Social workers in Poland fighting for better conditions for professional social work¹⁵ (November 2018)
11. Social workers in Iceland are part of the protest regarding the wage gap and other issues that specifically affect women in Iceland¹⁶ (October 2018)

12. Social workers from BASW became our common voice on making visible the impact of austerity (June 2018)

2. Boosting the exchange of knowledge in Europe

Effective knowledge and expertise sharing between social workers are the IFSW Europe's greatest asset. Only through sharing knowledge we were able to work effectively with people in needs and grow at both an individual and professional level in the context of COVID-19.

Therefore, IFSW Europe joined our members online seminars and webinars organised by our national organisations in Russia, Malta, Bulgaria, Romania, UK.

IFSW Europe also organised a number of webinars:

1. The social work responses to the needs of homeless people in context of COVID-19 (In partnership with our member organisation and social workers in Denmark);
2. Mental health social work and the psychosocial impact of covid-19 on adults (in partnership with our member organisation and social workers in Ireland);
3. Community social services' responses to Covid-19 (In partnership with our member organisation and social workers in Netherland);

In the context of COVID-19, IFSW Europe has permanent support offered to our member organisations and social work-

Regions

IFSW Europe

ers, sharing practices and solutions between social workers around Europe. In the last 2 years cover by this report, and before the pandemic COVID-19 started, IFSW Europe organised a number of seminars and group discussion is topics that are relevant for social workers and social services. Some examples:

1. Social workers for transformational and sustainable social protection in Europe - IFSW Europe's key messages about the implementation of the Pillar of Social Rights and how these relate to IFSW Policy on Social Protection (Denmark, May 2019);
2. Group discussions on the involvement of social workers on European Social Pillar (Austria, September 2019);
3. Group discussions on IFSW statements of ethical principle and the way IFSW member organisations incorporate or refer to them (Austria, September 2019);
4. A social Europe is possible! The young generation of social workers are the spearhead of change (Austria, September 2019);
5. Make Europe Poverty Free (Austria, September 2019);
6. Social workers role in age determination of unaccompanied minors (Austria, September 2019);
7. Symposium: "A SOCIAL EUROPE IS POSSIBLE!" (Austria, September 2019)

8. IFSW Europe's Delegates' meeting, Vienna 2019

3. Improving the visibility and the voice of social workers in topics that affect the provision of social services and the life of people.



To be able to do that, we significantly increased our cooperation with the relevant partners in Europe. IFSW Europe has Representatives to the following institutions and networks:

- Council of Europe
- United Nations
- European Social Platform
- European Anti-Poverty Network (EAPN)
- Fundamental Rights Agency (FRA)
- International Psychogeriatric Association (IPA)

IFSW Europe also had representatives in the following Committees of IFSW Global:

- IFSW Global Education Commission
- IFSW Global Ethic Commission
- IFSW Global Indigenous Committee

Regions

IFSW Europe

During the last 2 years, IFSW joined our partners in the following activities:

1. IFSW Europe is a contributor to the E-APN report: Putting Social Rights and Poverty reduction at the heart of EU's COVID-19 response
2. IFSW Europe Joined the EAPN call to members of The European Parliament to make a Social Europe free of poverty (July 2019)
3. IFSW Europe is strongly engaged in securing and shaping the social protection and inclusion in today's and future Europe in partnership with European Social Platform (July 2019)
4. Joint IFSW Europe, EAPN, ATD Fourth World and Emmaus presentation in Brussels to MEPs on fighting poverty in Europe (October 2019)

4. Developing policy statement that reflects the priority of social workers.

To be able to do that we encouraged our members to express their priorities and we provided support in preparing and promote policy statements.

Over the last 2 years, IFSW Europe published the following statements:

1. IFSW Europe Statement on Covid 19
2. Call to authorities and service providers – social workers are on the front line in the assistance of people affected by COVID 19 – call to ensure them the necessary equipment

3. IFSW Europe calls on Social Work Schools to incorporate women's rights and domestic violence in their curriculum and all Social Workers to respond the needs of women in risk or disadvantaged situations – Orange the World (November 2019)
4. International Day for the Eradication of Poverty (October 2019)
5. Social Workers Respond to the Growing Social Crisis in Europe (September 2019)
6. IFSW Europe Steps-Up Action Following Social Worker Deaths (September 2019)
7. Europe Day Is About Creating A Truly Inclusive and Sustainable Social Europe For All (May 2019)
8. Make Social Workers Voices Heard in The Eu Parliamentary Elections²⁹ (March 2019)
9. Human Relationships Are A Fundamental Approach in Social Work for Creating Change and Improve People's Lives - World Social Work Day 2019 (March 2019)

IFSW Europe endorsed and published a number of statements of our member organisations:

- Irish Association of Social Workers Statement on Racism (June 2020)
- Statements on Brexit – British Association and Irish Association of Social Workers (September 2019)

Regions

IFSW Europe

5. Projects and cooperation between our member organisations

1. In 2019, The Netherlands BPSW started a twinning, a partnership with the Moroccan Association of Social Workers (AMAS)
2. Network "Social Work in German-Speaking Regions and Amongst German-Speaking Minorities"

Over the last 2 years, IFSW Europe accessed funds for two projects:

1. Social Workers for Transformational and Sustainable Social Protection
2. A social Europe is possible! The young generation of social workers are the spearhead of change

Our standing! IFSW Europe recognises that across Europe governments and people are struggling these days.

The health systems in all countries are under enormous pressures and social workers and other health and social care professionals are doing heroic work in responding to people's medical and social needs.

Indeed, solidarity is also being shown across Europe, for example, the large numbers of social workers are volunteering to support those individuals and families who are in need.

Social protection systems, where social workers play an essential role, have also come under enormous strain as unemployment increases hugely and high numbers of people become ill. These sys-

tems too must be adequately resourced to meet this catastrophe now and into the future.

IFSW EUROPE SALUTES SOCIAL WORKERS AND ALL OTHER FRONTLINE WORKERS WHO PUT THEMSELVES AT RISK IN THIS CRISIS TO SUPPORT PEOPLE IN NEED.

When this crisis is overcome, as it no doubt it will be, then there must be a rethink on the place of public health and social protection systems in all countries of Europe. This review must focus on the principle that people really do matter more than anything else – the social must balance the economic. There must also be a re-focus in a manner that gives real meaning to 'leaving no one behind'. The principles in the European Pillar of Social Right, above all, must be at the heart of the future of Europe.

Ana Radulescu, Regional President IFSW Europe and John Brennan, Regional Vice President IFSW Europe

News and Statements

Please [click here](#) to read the latest news and statements of the IFSW Europe Region

Regions

IFSW Latin America and Caribbean



Países Miembros

1. Argentina
2. Bolivia
3. Brasil
4. Chile
5. Colombia
6. Costa Rica
7. Cuba
8. El Salvador
9. Haití
10. Grenada
11. México (Miembro solicitante)
12. Nicaragua
13. Panamá
14. Paraguay
15. Perú
16. Puerto Rico
17. República Dominicana
18. Uruguay

Mesa Directiva

Larry Emil Alicea
Puerto Rico
Presidente

Tania Ramos
Brasil
Vicepresidenta

Comisionados/as

Xanthis Suárez – Nicaragua – Derechos Humanos

Jenny Linares – Perú – Pueblos Originarios

Kenia Batista – Panamá – Ética y Oficial de Elecciones

Alicia Yáñez – Chile – Representante en ONU Santiago

Iván De Jesús – Puerto Rico – Coordinador Agenda Global

Marinilda Rivera – Puerto Rico – Comisión Interina Educación

IFSW Latin America and Caribbean

Mejores Prácticas Desarrolladas y Logros

- a. Guías para trabajo social en la Región y llamado de acción en el contexto del COVI
- b. Seminario del Trabajo Social en el Contexto del COVID 19 (Webinar) Presidenta Mundial, Dra. Marinilda Rivera y Maestra Violeta Flores. (200 participantes)
- c. Seminario (Webinar) sobre desprofesionalización en trabajo social con perspectivas de Uruguay, Brasil, El Salvador, Panamá, República Dominicana y Puerto Rico (500 participantes en zoom, sobre 30,000 en Facebook y YouTube)
- d. Discusión y trabajo regional en Panamá para delimitar temas de la agenda global para la región
- e. Discusión y trabajo regional para delimitar temas desde la región para los estándares globales de educación
- f. Nuevo código de ética en El Salvador.
- g. Guías socioeducativas para trabajar con temáticas sociales desde Puerto Rico.
- h. Webinars sobre acciones del trabajo social en el contexto del COVID 19 y otros asuntos como género, políticas sociales, trabajo gremial en países como Costa Rica, Puerto Rico, Argentina, El Salvador, Colombia, Panamá, México, República Dominicana.
- i. Traducción al Español de lineamientos éticos en el contexto del COVID 19.
- j. Estudio de Necesidades de la Región (Encuesta online)
- k. Elaboración de propuestas de capacitación a base de necesidades en El Salvador.
- l. Organización gremial en Argentina para facilitar la comunicación entre las regiones.
- m. Campañas y guías profesionales contra el racismo trabajadas desde Brasil.
- n. Chile trabajó desde las organizaciones de base para la respuesta del COVID en las poblaciones con mayor riesgo de contactos.
- o. Chile continúa investigación histórica sobre colegas torturados en la dictadura.
- p. Costa Rica contrató profesional de Trabajo Social para desarrollo de investigaciones sociales.
- q. Colombia implementó políticas orientadas a la prevención del COVID y la protección del personal.
- r. Puerto Rico propuso proyecto de ley para que se considere al trabajo social como servicio profesional esencial durante la pandemia.

Regions

IFSW Latin America and Caribbean

- s. Costa Rica desarrolló observatorio de condiciones laborales.
- t. Integración de trabajo entre los gremios y unidades académicas en Puerto Rico, Argentina, Costa Rica, Chile, Brasil.
- u. Fortalecimiento de plataformas virtuales en los países para dar servicios a agremiados.
- v. Puerto Rico desarrolló guías éticas para servicios por tele consulta.
- w. El Salvador tuvo incidencia en las leyes de violencia intrafamiliar, derogatoria de un artículo de la reforma de salud y en la reforma de las leyes de adopciones.
- x. El Salvador tiene representación de trabajadores sociales como evaluadores de pares en los ministerios de educación superior.
- y. El Salvador desarrolló proceso de consultoría con calificación de excelencia con UNICEF.
- z. El Salvador trabaja con las academias la propuesta de la primera maestría de trabajo social en el país.
- aa. México realiza un diagnóstico nacional y foro nacional en línea por varios días.
- bb. Nicaragua trabaja en la búsqueda de becas y pasantías para sus personas miembros.
- cc. Trabajo multiorganizacional con colectivos de profesiones en el contexto del COVID 19 desde Panamá.
- i. Apoyo a hoteles hospitales.
- dd. Trabajo desde Panamá para la solicitud de la Asamblea Mundial para el 2022.
- ee. Guías de atención electrónica a participantes desde Panamá.
- ff. Aprobación de Ley que regula el trabajo social en Paraguay y en Uruguay.
- gg. Creación de filiales en varios países para organizar el trabajo gremial.
- hh. Paraguay trabaja protocolos de intervención en salud.
- ii. Cursos virtuales desde Paraguay para personas miembros de la Asociación.
- jj. Desarrollo de congresos nacionales e internacionales en Perú.
- kk. Posicionamientos en asuntos sociales en diferentes países y desde la región.
- i. 6 declaraciones de la región
- ll. Incremento de afiliados en la mayoría de las organizaciones
- mm. Participación de la Región en el encuentro del Comité Indígena en Calgary.
- nn. Trabajo para combatir la desprofesionalización del Trabajo Social en Perú a través del proyecto de ley.
- oo. Defensa regional e internacional contra los intentos de ubicar al trabajo social fuera de las ciencias sociales y

Regions

IFSW Latin America and Caribbean

como una disciplina médica dentro del campo de la salud.

pp. La organización en Brasil es la encargada de defender y fiscalizar la profesión en Brasil.

qq. La organización en Puerto Rico controla por ley la educación continuada.

rr. Proyectos éticos políticos organizados en Puerto Rico, Brasil y en desarrollo en otros países.

Retos

a. Debilitamiento de algunos gremios ante el recrudecimiento de acciones desde los gobiernos neoliberales que impiden el desarrollo de la membresía y menoscaban la subsistencia económica de las organizaciones.

b. Trabajo para fortalecer la articulación entre asociaciones y academia.

c. Desarrollo de leyes para fortalecer el gremio en países donde no existe.

d. Fortalecer el trabajo contra la desprofesionalización y la precarización de las condiciones laborales.

e. Desarrollo de encuesta para conocer las necesidades profesionales en el contexto del COVID.

f. Promover la visibilización del trabajo social en los medios de comunicación.

g. Desarrollar comunicaciones formales con la organización mundial del trabajo para combatir la desprofesionalización.

h. Incidir en los debates de la agenda global y los estándares de educación con epistemologías y saberes del sur.

i. Trabajo y cabildeo para superar las barreras idiomáticas en la FITS.

j. Promoción de los servicios sociales como servicios esenciales en los países de la región.

k. Lograr membresías en países no afiliados.

Sometido por:

Larry Alicea, *Presidente FITS ALC*
Tania Ramos, *Vicepresidenta FITS ALC*

News and Statements

Please [click here](#) to read the latest news and statements of the IFSW Latin America and Caribbean Region

Regions

IFSW North America



Members

- Total North American Regional Members: 130,531
- Number of NASW current members: 111,531
- New NASW Members: Net gain 96 members
- New NASW Applications: NA
- Number of CASW Partner Organization members: 20,000

Good Practices Developed in the Region

- (United States) Integrative Behavioral Healthcare

- (United States) Social Work HEALS Scholars Program—funding extended for 1 A collaborative endeavor with CSWE. The objective is to strengthen delivery of health care in the U.S. by advancing education and training of social workers.
- (United States) Trauma Informed Practice continues to gain ground as a key approach to mental health treatment and will be especially needed during these times of heightened depression and anxiety due to struggle for racial equity and the co-occurring COVID-19.
- (United States) NASW National and Chapters advanced social justice and social welfare by offering informative educational and knowledge building webinars: racism, COVID-19, voting rights, gun safety, family

Regions

IFSW North America

- (Canada) Social Justice and Advocacy in Action CASW continues to press for a new direction on reconciliation with Canada's Indigenous Peoples through implementation by the government and people of Canada of the Calls to Action in the report of the Truth and Reconciliation. We continue to advocate for and support equity in, but not limited to, education, child welfare, health service delivery and treatment before the courts for Indigenous Peoples in recognition of our shortcomings as a country to guarantee and implement these rights set out in The Canadian Charter of Rights and Freedoms. We support the comprehensive nature of the report of the National Inquiry Into Missing and Murdered Indigenous Women and Girls. The 231 recommendations affirm social work's holistic understanding of well-being by acknowledging the role of the social determinants of health and Canada's social and political systems in ending violence faced by indigenous peoples, Indigenous women and girls in particular and for Two-Spirit LGBTQIA individuals. To this end, CASW issued a statement of apology and commitment to Canada's Indigenous Peoples.
- (Canada) Statements CASW also releases statements to help forward a progressive agenda in Canadian social policy and in support of allies in Canada

and North Most recently, CASW issued a statement of our stand in solidarity with the Association of Black Social Workers' Declaration of Systemic Racism in Canada. CASW also stands in solidarity with NASW's statement on lethal police action against African Americans and in support of NASW's own statements on social concerns. We recognize our responsibilities in the elimination of racism. CASW continues our advocacy in improving long term care for people in Canada. In particular, CASW provided recommendations for responding to the staggering effects COVID-19 had on our health care system, particularly in long-term care homes across Canada. We support recommendations from the Canadian Nurses' Association, the Canadian Medical Association and are partnering with other Allies in Health to address the significant deficits in health care revealed during the ongoing pandemic. A statement titled *Ending Mandatory Minimum for Drug Offences* was released in May 2020 to address the devastating and ongoing impact of the opioid crisis and the often-negative impacts of continued criminalization of substance use. A statement by the Extended Healthcare Professionals Coalition (EHPC), in April 2020 called for a joint technical briefing on newly introduced programs for

Regions

IFSW North America

businesses, employers and individuals as part of the COVID-19 Economic Response Plan to help mitigate the economic impact of the pandemic.

- (Canada) Member Services CASW and its Federation partners continue in the revision of the CASW Code of Ethics and Guidelines and in the accordance with the Truth and Reconciliation Commission in a spirit of reconciliation with Canada's Indigenous peoples. A revision of the Scope of Practice continues also. CASW offers free national webinars to all partners in the Federation, including topics on policy, practice issues, clinical social work and indigenous knowledge in addition to current topics relevant to issues such as the opioid crisis, aging, child welfare, racial injustice and COVID-19. During the 1919-2020 fiscal year, 49 webinars were delivered to provide 55 hours of continuing education to a total of 21,567 registrants. <http://www.casw-acts.ca> As a unified national voice for Canadian social workers, the Intersectoral Committee represents social work education, regulation and the professional associations in Canada, working in partnership to strengthen and improve the profession.
- (Canada) *Strengthening the Profession* Funding from the Government of Cana-

da is being utilized to review CASW's assessment service for internationally trained social workers for the purpose of registration in Canada; 261 were completed in fiscal year 1919-2020. A new publication for members, *The Social Worker*, planned for a launch in the Fall of 2020, will inform members on CASW developments and support social work practice with evidence based practice solutions.

- (Canada) COVID-19 The novel corona virus has challenged social workers across the In Canada, social workers increased therapeutic and support services through electronic means. In addition, the crisis has allowed some employees access to social work services through enhancements to employee health plans. CASW has issued regular updates on the status of COVID-19 across Canada and social work news related to the pandemic. In support of our members curing COVID-19 and in recognition of the stressors and concerns of remaining safe and ensuring safety of vulnerable clients and of working largely in isolation from home and not being able to continue social work in their usual practice, CASW created a moderated Facebook page for social workers during the pandemic. Over 900 social workers are members.

Regions

IFSW North America

Regional Conference

NASW Conferences

NASW Chapters (U.S.) Offered a variety of chapter conferences since June. Several occur in the fall and each year and many are presented in the Spring during Social Work Month which occurs in March. This year's theme was Social Workers: Generations Strong. Many chapters pivoted to having virtual conferences due to COVID-19 and lock down orders.

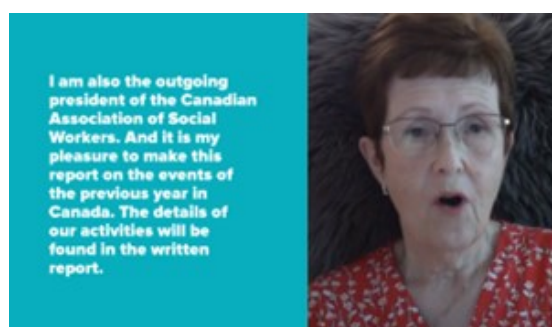
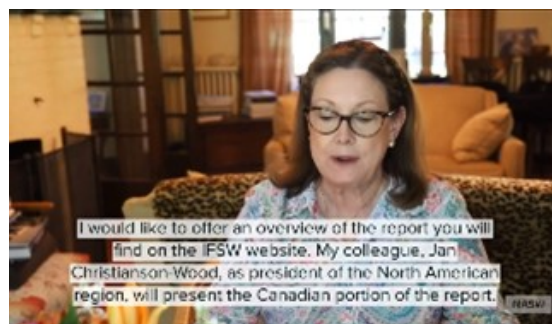
For more information please visit the NASW Chapter Highlights web page <https://www.socialworkers.org/About/Chapters/Chapter-Highlights>

The NASW 2020 National Conference in-person conference scheduled for June 15-17 was moved to a virtual format with a plan to have an in-person conference next year. The key focus was racial equity.

CASW Conferences

- CASW held its Annual General Meeting and Federation meeting as a virtual meeting on June 26. Other events usually held at this time were postponed due to the pandemic.
- The highly anticipated SWSD2020 Calgary conference in partnership between IFSW and the University of Calgary's Faculty of Social work was cancelled due to the dangers of the

pandemic and the significant restrictions and difficulties in travel whether within Canada, North America or abroad



- CASW supports members of its Federation partners with transfers of scholarship funds to the partners for their distribution and to individual social workers at the national level wishing to attend conferences focused on issues of social. Due to the COVID-19 pandemic, these opportunities have been limited.
- The Association of Black Social Workers held a 40th Anniversary celebration and conference in Halifax, Nova Scotia in the fall of 2020. CASW is deeply appreciative of the invitation issued to our President to celebrate the role of Black

Regions

IFSW North America

social workers in exposing and confronting racism in Canada.

Achievements in the Region

- Integrating Social Care Into Health Care Delivery – NASW played a significant leadership role in securing the National Academies of Science, Engineering and Medicine’s Consensus Study Report Integrating Social Care into the Delivery of Health Care, released September 25, 2019, the report’s findings highlight the critical role social workers play in improving our nation’s health. We will continue our ongoing efforts to leverage this study for membership engagement, advancing the profession, and addressing health disparities. There is emphasis on the Social Determinants of Health. To read the report, click [here](#).
- Social Work Votes Coalition with the Nancy A. Humphries Institute for Political Social Work (ongoing)
- Advocacy for the Workplace Violence Prevention for Healthcare and Social Service Workers Act
- Advocacy for compassionate immigration policy, opposing Trump Administration on new regulations that overturn protections for immigrant children.
- Development of a workforce data center in collaboration with the Council for Social Work Education and the American Social Work Board
- Advocacy for the First Step Act legislation for Comprehensive Criminal Justice Reform
- NASW Foundation Social Work Pioneers 25th Anniversary Celebration. November 1-2, 2019. Twenty-six new Pioneers were inducted who have made special contributions to the field.
- Social Work Month
- “Social Workers: Generations Strong” was the theme for Social Work month, March 2020. With a special commitment to educate the public and media about social work.
- NASW completed participation on the development of the American Psychiatric Association’s Task Force for Interprofessional Collaboration. The group produced a set of principles to guide the care of individuals with serious mental illness.

Canadian Association of Social Workers

- Social Work Month -This demonstrates the impact of social work as a profession and on the lives of individuals to

Regions

IFSW North America

educate the public and media about professional social work practice • “Hill Day” National Social Work Month – a shared reception with prominent social workers in Canada’s Senate combined with office visits to elected officials responsible for social policy and health in addition to visits with members of the Opposition parties to share our vision for Canada. • Invitations to our President, Board Members, Executive Director and Director of Strategy and Policy to speak at conferences, coalitions and alliances. • CASW continues its active role in alliances and advocacy with advocates for social justice and ongoing improvement in the lives of the people of Canada.

Challenges and Social Action in the Region

COVID-19

- (Canada) COVID-19 has challenged social workers across the world. CASW issues regular reports on the status of COVID-19 across Canada and social work news related to the pandemic. Fehler! Linkreferenz ungültig. We acknowledge the impact on social workers of working in situations of exposure to the virus and the impact on social workers who practice with vulnerable pe-

oples for the impact on their ability to meet clients privately and in safety.

- (USA) Social workers are serving on frontlines due to their professional roles in a variety of practice settings. Social workers are also having to adapt to Telehealth environments very quickly which has been challenging on a number of fronts. NASW has worked hard to provide support and resources as exemplified in the following resources:
- Coronavirus (COVID-19) 8 Ethical Considerations: [Link](#)
- Podcast: Supporting Seniors During Social Distancing: [Link](#)
- Self-Care During the Coronavirus-Pandemic: [Link](#)
- COVID 19 Political Advocacy: [Link](#)
- Additional COVID-19 Resources: [Link](#)

In addition, NASW has endeavored to produce a variety of podcasts and articles that particularly focus on social work’s role in promoting mental health care.

Former NASW Maryland Social Worker of the Year *Darryl Webster*: [Staying Mentally Healthy During a Pandemic](#)

Lynn Hagan

[How to deal with disasters such as the coronavirus](#)

[Preparing Your Family for a Pandemic](#)

Regions

IFSW North America

Lindsay Brine

[Podcast: Supporting Seniors During Social Distancing](#)

Kristin Lee

[Self-Care for Social Workers During the Coronavirus Pandemic](#) (this advice also applies to non-social workers)

Black Lives Matter and Social Action Across the USA and Canada

Canada

CASW stands in support of the marches and demonstrations by Canadians acknowledging the struggles of our American neighbours peacefully protesting violence against Black Americans in their homes, on the streets and during public demonstrations as citizens. We acknowledge the injustices experienced by Canadians who are Indigenous, Black and people of colour and stand in support with them. As a profession, we are pledged to continue in opposing and eliminating racism.

USA

NASW is approaching the racism that was so brutally demonstrated by the killing by a police officer of George Floyd, and others before him, as a "second pandemic." Racism has long been with us as a country that was largely built on slave labor. The Floyd murder, captured on video, provided a galvanizing moment for our country, and our association will fight for racial justice in everyday we can. We are appreciative of our Canadian colleagues and those around the world who have ex-

pressed solidarity with the fight for racial equity.

The following issues continue to be challenges to the North American Region

- Racism
- Gun Violence; the United States and Canada deal with the impact of gun violence
- Opioid Epidemic; deaths and addiction as a result of easily obtainable opioids in North America
- Immigration and treatment of children
- Abortion Rights and access to service are issues of concern in the United States and Canada
- 2020 National Elections – US

Jan Christianson-Wood, Regional President IFSW North America and Kathryn C. Wehrmann, Regional Vice President IFSW North America

News and Statements

Please [click here](#) to read the latest news and statements of the IFSW North America Region

Commissions

Education Commission

The aim of the Education Commission is to create a structure for the transfer of knowledge between social work education and practice where both are informed and learning from one another. The Commission supports social work programmes and educators who experience pressures to make “concessions” on the quality of education to be able to meet the professions international standards.

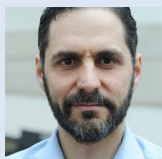
[Read more about the Education Commission.](#)

Global Standards for Social Work Education and Training

IFSW and IASSW have jointly updated the Global Standards for Social Work Education and Training. Read more about it on [page 84](#).

Commissioners

Global



Vasilios Ioakimidis
Global Commissioner

Africa Region



Lawrence Mukuka
Regional Commissioner



Zena Mnasi
Regional Commissioner

Asia and Pacific Region



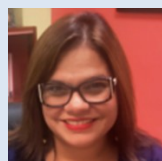
Mariko Kimura
Regional Commissioner

Europe Region



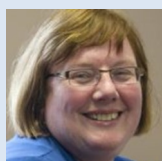
Nicolai Paulsen
Regional Commissioner

Latin America and the Caribbean Region



Marinilda Rivera Díaz
Regional Commissioner

North American Region



Joan Davis-Whelan
Regional Commissioner



Gary Bailey
Regional Commissioner

Education Commission

Achievements

1. The Global Standards for Social Work Education and Training

Over the last 12 months, the Interim Education Commission co-ordinated the process of updating the Global Standards for Social Work Education and Training.

This was a complex project that resulted in a strategic and wide-ranging approach to building global consistency across social work education. The jointly agreed standards set out a minimum baseline for educational quality which was deemed by the IFSW executive as a critical strategic development for the social work profession.

The new standards include a wide range of additions and changes to the 2004 document. We believe that the new set of standards retain a balance between the diversity required in a global organisation and also a categorical emphasis on human rights and social justice. Therefore, the new document is more politically assertive in a number of crucial areas such as racial and gender equity, social justice, human rights, de-colonisation.

Our Commission worked very closely with IASSW throughout this process. The 'consultation and drafting' stage of the Global Standards closed in March 2020. In total the two organisations (IFSW and IASSW) received and considered more than 1000 comments from colleagues in all 5 regions and prepared 9 drafts. All

members of the Joint IFSW-IASSW dedicated to the project an enormous amount of energy and time.

In August 2019 in a joint meeting attended by Silvana Martinez, Rory Truell, Vasilios Ioakimidis, Dixon Sookraj, Ana-Maria Campanini and Barbara Shank IFSW and IASSW agreed on the milestones of the second part of the updating process and confirmed the end-date. The milestones followed were as follows:

1. Agree on a structure for the Standards Document (Sep 15)
Consider and Update Context and DOMAIN 1: Standards regarding the "School's" core purpose or mission statements DOMAIN 2: Standards regarding programme objectives and outcomes (Sep 30)
2. Consider and Update Domains 3-4 DOMAIN 3: Standards with regard to programme curricula and field education DOMAIN 4: Standards with regard to core curricula (Oct 21)
3. Consider and Update Domains 5-6 DOMAIN 5: Standards with regard to professional staff DOMAIN 6: Standards with regard to social work students (Nov 15)
4. Consider and Update Domains DOMAIN 7: Standards with regard to structure, administration. Governance and resources DOMAIN 8: Standards with re-

Commissions

Education Commission

gard to cultural and ethnic diversity (Dec 1)

5. Consider and Update DOMAIN 9: Standards with regard to the values and ethical codes of the profession (Dec 21)
6. Develop a draft document (Jan 10)
7. Consolidate views from both organizations (IASSW and IFSW) (Jan 30)
8. Seek feedback from stakeholders – Regional VP, IASSW Board, and others, etc. (Feb 28)
9. Finalize document & submit to IASSW Board (May 30)
10. Present proposal to IFSW and IASSW General Meetings (June / July)

Throughout the process, the regions were fully involved through: a) the regional presidents and vice presidents and b) regional representatives in the commission.

In July 2019- Regional presidents and vice presidents received a report on the progress of updating the standards and were also encouraged to consult with their regions and share feedback on proposed changes with the commission. All regions responded positively and shared feedback on initial report.

In October 2019, Regional presidents and vice presidents received the first draft. Regional presidents and representatives were encouraged to consult with their members and share feedback on the draft.

In December 2019. Regional vice presidents received a revised draft. This had incorporated feedback received by members in the previous round. Regional presidents and representatives were encouraged to consult with their members and share feedback on the draft.

In January 2020, Vasilios Ioakimidis and Dixon Sookraj met in Canada in order to discuss feedback from their respective membership and try to synthesize the documents and agree on a joint draft.

In February 2020 Regional presidents, vice presidents and regional representatives to the commission received the joint IFSW and IASSW draft.

In March 2020, IASSW provides some additional minor feedback (mostly cosmetic and stylistic).

In March 2020, the final draft is submitted to the IFSW Executive.

In addition to the aforementioned process, some regions facilitated events that were relevant to the broader discussion about Global Standards. Ideas from these events were also fed back to the Commission at an ad hoc basis in order to consider them during the process of updating the Global Standards. Examples of additional material considered include statements from Conference of the African Region, feedback from the conference in Greece, Europe (see below), a statement on Gender Violence issued by the Dutch Association

Education Commission

and subsequent communications on this issue.

The main objectives of the updated Global Standards are to:

- Ensure consistency in the provision of social work education while appreciating and valuing diversity, equity and inclusion.
- Ensure that Social Work education adheres to the values and policies of the profession as articulated by the IFSW and IASSW.
- Support and safeguard staff, students and service users involved in the education process.
- Ensure that the next generation of social workers have access to excellent quality learning, opportunities that also incorporate social work knowledge deriving from research, experience, policy and practice.
- Nurture a spirit of collaboration and knowledge transfer between different social work schools and between social work education, practice and research.
- Support social work schools to become thriving, well-resourced, inclusive and participatory teaching and learning environments.

The next two stages of the process involve: a) approval through the IFSW and IASSW respective General Meetings, and b) supporting regions towards the gradual implementation of the new standards. The Education Commission members wish to express our thanks to the IFSW executive for the step by step support and validation of the various drafts that have been circulated.

2. Other Activities and Public Interventions

In addition to the updating the Global Standards, our Commission also engaged, facilitate or supported a number of other activities related to educational matters. This included:

- Facilitation of the IFSW- SWAN international Covid19 webinar series

In March, April and May 2020 our Commission supported and facilitate a series of (very successful) webinars organised by the Social Work Action Network (International) and the International Federation of Social Workers. The webinars were in response to the Covid19 pandemic and asked the question: What can, and should, social work and social workers do in the face of the Covid19 crisis. The webinars drew speakers from across the globe. Each event was viewed by thousands of interested social work academics, practitioners and students. [At the time of writing this report, the four international webinars had been viewed 38,000 times on Facebook, with several thousand further

Commissions

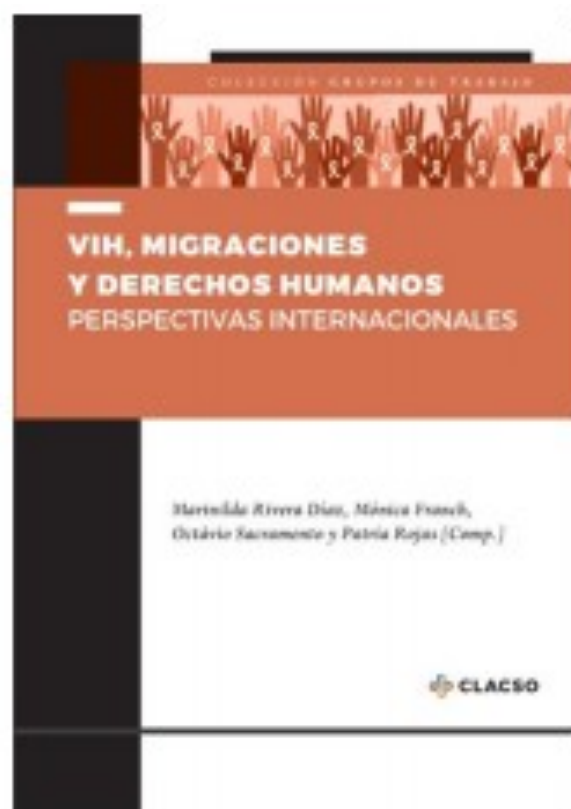
Education Commission



views on the IFSW and SWAN websites and SWAN YouTube page]. The webinars indicated a clear demand for a social work response to the crisis and supported the now widely used twitter hashtag #swresponds.

- Dr. Rivera Díaz collaborated in the writing process of the public statement against detrimental practices and policies toward public education from Jair Bolsonaro, President of Brazil. It was published on June 24, 2019 on IFSW webpage. Also, there were other public statements published against political practices on human rights violation from Latin American and Caribbean countries at regional level.
- Joint IFSW and IASSW press release with regards to "Global Standards for Social Work Education and Training" <https://www.ifsw.org/iaasw-ifsw-to-update-global-standards-for-social-work-education-andtraining/>
- International Book Presentation:

Dr. Rivera Díaz coordinated the presentation of the international book "VIH, Migraciones y Derechos Humanos: Perspectivas Internacionales (HIV, Migrations and Human Rights: International Perspectives). The book is compiled by: Dr. Marinilda Rivera- Díaz, Dr. Mónica Franch (Brazil), Dr. Octavio J., Rio Janeiro (Portugal) & Dr. Patria Rojas (EU) and published by the Latin



American Council of Social Sciences. Retrieve on: <http://biblioteca.clacso.edu.ar/clacso/gt/20191202102019/VIH-Migraciones-yDerechos-Humanos.pdf>. The activity took place at the University of Puerto Rico on December 3, 2019 and

Commissions

Education Commission

counted with the virtual participation of international authors and researchers, the



President of IFSW for Latin American and the Caribbean, Mr. Larry Emil Alicea. Invited Speaker: Dr. Mark Padilla, full professor at Florida International University.

- Virtual Conference in Latin America: COVID-19: Acciones desde el Trabajo Social" (COVID-19: Actions from the Social Work" Date: April 23, 2020 Panelists: Dr. Silvana Martínez, IFSW President Dr. Marinilda Rivera Díaz, IFSW Interim commissioner for LAC Prof. Violeta Flores, University of Valparaíso, Chile
- Conference co-organisation in Greece

The Department of Social Administration and Political Science of Democritus University of Thrace, Greece the Hellenic

Association of Social Workers (SKLE), the Social Work Center of the University of Essex and the International Federation of Social Workers (IFSW), as honorary co-organizer, hosted a conference on: "Social Deprivation, Child Protection and Human Rights". (Friday 1st November 2019 to Sunday 3rd November 2019).

Vasilios Ioakimidis (Chair of the Interim Education Commission) and Ana Radulescu (President of IFSW-Europe) contributed to the conference.

3. IASSW- IFSW collaboration on educational matters

During this period, our commission worked very closely with our counterparts in IASSW. Our joint work has been characterised by collegiality, cordiality and professionalism.

In February 2019, the presidents of IASSW and IFSW met in London and inter alia discussed issues related to the Education Commission. Vasilios Ioakimidis attended the part of the meeting related to educational matters. On the basis of the mutual recognition of the important role both organisations can play in the area of education, we agreed to develop further plans for joint work on the Global Standards for Social Work Education and Training.

A follow up teleconference was organised in August 2019. This meeting was attended by Silvana Martinez, Rory Truell, Vasilios Ioakimidis, Dixon Sookraj, Ana-Maria

Commissions

Education Commission

Campanini and Barbara Shank. All participants agreed that there was good progress on the process of updating the Global Standard, agreed on the milestones and confirmed the end-date for the process.

In January 2020, Vasilios Ioakimidis and Dixon Sookraj (IASSW) met up in Windsor, Canada and over two days reflected on the feedback received on previous Global Standards' drafts. They synthesised this feedback and produced a mutually acceptable final version. The final version has been seen and endorsed by the Executive Committees of the two organisations.

The excellent and proactive work between IFSW and IASSW during the demanding process of updating the Global Standards makes us feel confident that the Education Commission can be a bridge between the two organisation and will help enrich our partnership.

Challenges

The main challenge our Commission faced during the reporting period is related to the partial engagement of some regions with the work of the Commission. As in all IFSW Commissions, our work is based on voluntary contribution to the Organization. However, it has not always been easy for all commission members or regional re-

presentatives to engage fully due to other work commitments.

Another challenge our commission experienced relates to the need for clarification of potential overlap in the activities of different organisational sections or committees. IFSW is an organization that deals with complex topics intersecting multiple levels of social and political activity. Due to the nature of these issues, it is inevitable that there will be some overlap over the remit of different sections or commissions. As commission we propose that protocols and mechanisms around IFSW intervention (such issuing statements on subjects that intersect the remit of different commissions) are clarified.

Future Plans

The future objectives of the Commission are informed by the "direction of travel" agreed by the Executive Committee in January 2019 and by the views of the Commissioners. The broad mission of the commission will be to provide a permanent and inclusive platform for practitioners and educators to work together in order to monitor, explore and intervene in discussions about the nature and development of social work education at a global level. A crucial aspect of this process will be monitoring the rollout of the updated Global Standards. We appreciate that developing

Commissions

Education Commission

a new set of standards is only part of this journey. Rolling out the new standards and incorporating the documents' principles into curricula will be a far more demanding process. Our commission will be working closely with regional and national associations in order to support the process of implementation.

In addition, the Education Commission will also engage with the following activities:

- Transfer of knowledge and good practice about social work education (global level). This could happen through the facilitation of seminars, conferences or other events in liaison with national associations and regions.
- Help create a repository of freely accessible educational material. During the covid-19 lock down an increased number of really important discussions and seminars were facilitated by members of IFSW and other social work organizations. An important task for our organization will be to co-facilitate the creation of a platform sign posting or hosting free accessible resources.
- Sustain the dialogue and enhance the consultation on educational matters with IASSW and other global/ regional organizations
- Represent IFSW in fora discussing issues about social work and Higher Education.
- Monitor the expansion of social work education globally and identify qualitative and quantitative trends
- Intervene in support of social work education when there are political or technocratic pressures to make "concessions" to the quality of education.
- Explore, document and celebrate the history of IFSW's involvement in education.
- Lead on the facilitation of events, publications and research projects that advance the inclusive, practice-based, holistic and participatory nature of social work education (including the International Social Work Journal and the Federation's publications).
- Promote genuine participation of people who use services in social work education.
- Support the process of decolonization of social work curricula.

Vasilios Ioakimidis, IFSW Global Education Commissioner

Commissions

Ethics Commission

The Ethics Commission is responsible for the review of the Statement of Ethical Principles, that every member of IFSW is required to adhere to, in addition to their own Code of Ethics. The Statement presents the basic ethical principles of the social work profession, offers guidance and recommends action when the work presents ethical dilemmas not only for members but for individual social workers in relation to the people with whom they work, colleagues and others in the field. [Read more about the Ethics Commission.](#)

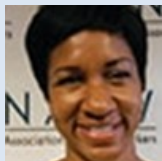
Latest Publications

[Practising During Pandemic Conditions: Ethical Guidance For Social Workers](#)

[Study Of The Ethical Challenges Faced By Social Workers During The Covid-19 Pandemic](#)

Commissioners

Global



Dawn Hobdy
Global Commissioner

Africa Region

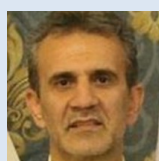


Jacob Olutimi
Regional Commissioner

Asia and Pacific Region



Teoh Ai Hua
Regional Commissioner



Hassan Mousavi Chelak
Regional Commissioner

Europe Region



Jane Shears
Regional Commissioner

Latin America and the Caribbean Region



Kenia Batista
Regional Commissioner

North American Region

vacant
Regional Commissioner

Commissions

Ethics Commission

The ethics commission experienced a productive year. Since the approval of Global Social Work Statement of Ethical Principles approved in 2018, the committee has been busy promoting the Principles thought the regions. Group efforts for the year include:

- Designing a logo for the commission
- 4 skype meetings
- Participation in the COVID 19 survey



Activities by region include:

North American Region/Global Ethics Commissioner Activities

- Presentation: July 2020 -IFSW Conference - International Social Work Practice: Ethical Issues and Responses
- Research: June 2020 - The IFSW Ethics Commission has formed a partnership

with the Social Work Ethics Research Group (SWERG) to undertake rapid research on the ethical dilemmas that social workers are experiencing globally when responding to the COVID19 crisis. The report from the research will be presented at the online IFSW Global Conference on Saturday 18th July.

- Presentation: June 2020 – NASW National conference virtual presentation: Hot Topics in Social Work Ethics: An Exploration of Common Ethical Dilemmas and Opportunities – reviewed the Statement of Ethical Principles.
- Panelist: June 2020 - IFSW Africa Region webinar conversation: Say No to Racism
- Panelist: May 2020 – Participated in an IFSW webinar: IFSW & SWAN webinar Ethical Challenges for SW during COVID 19 Pandemic
- Meeting: March 2020 – met with Brian Auslander of the Israel region to assist with resolving the current sanction
- Presentation: October 2019 - CSWE presentation Ethics in International Social Work Practice: Preparing Students
- Webinar: April 2019 - Webinar with Vishanthie Sewpaul: Implementing a global code of ethics to ensure professional standards for the Global Social Service Workforce Alliance

Commissions

Ethics Commission

- Meetings: Participated in several skype meetings regarding the Israel Union sanction
- Reviews: Reviewed Codes of Ethics including Mexico, Congo, Jordan, Togo and others

Goals for the next two years include:

- AN NASW webinar on International Social Work and Ethical Principles
- Paper developed by the ethics commission
- Continued reviews of country Codes of Ethics
- Addressing Racism and Ethics
- Developing tips on how to manage post COVID 19

Europe Region

- In May / June 2019 a survey was sent to members in the European Region asking for evidence of how the IFSW Principles were being used in practice and whether Codes of Ethics had been updated since 2018.
- The findings were presented and further debated at the IFSWE delegates meeting in Austria, followed up by a workshop at the IFSWE Conference.
- The UK BASW Code of Ethics was also updated as were many in the European region.
- An abstract was submitted from the Ethics Commission in October 2019 for the Global Conference and accepted.

- BASW hosted an online meeting in April 2020 for IFSWE members and their delegates.
- IFSW Ethics Commission joined with the Social Work Ethics Research group to carry out a global survey on the impact of COVID-19 on social workers' ethical dilemmas and decision-making.
- The report from the research will be presented at the online IFSW Global Conference on Saturday 18th July.

Planning for the next two years will focus on the publication of an article in an International Journal and further work on developing resources, including continuing professional development practice guides, on ethical decision-making for social workers

African Region

- WhatsApp group on AR Ethics Commission is currently running as a platform for AR Commissioner to meet and interact with national associations presidents and secretaries on the activities of the Ethics Commission.
- Report on the activities of the ethics commission was presented to the executive meeting of the AR at Kampala, Uganda during the 2019 IFSW AR conference.
- The template for the dissemination of ethical principles was distributed through the national associations' contacts email addresses and the WhatsApp group platform.

Commissions

Ethics Commission

- AR ethics Commissioner was one of the speakers at a webinar on COVID-19 AFRICA: ETHICAL DILEMMAS AND HUMAN RIGHTS CONCERNS.
- AR ethics Commissioner also made a statement to the IFSW AR Facebook page on covid-19 response and African Youth social workers WhatsApp group platform (a platform opened to actualize the decisions taken at the 2019 AR regional conference on social work students and youths.)

Challenge:

- Response to information shared to national associations were not encouraging. Only two countries responded to the template shared on statement of ethical principles

Achievement:

- Support and Cooperation from the IFSW AR executive committee to the AR Commissioner was encouraging.
- Planning for the next two years:
- There is need to build the capacity of members countries on the importance of ethics/ ethical principles in the workplace and amongst the students.
- A sponsored physical workshop needs to be organized in a country and the recorded video shared to national associations and social work institutions.

Asian Pacific and Latin American Regions

I did not receive a report from the Asian Pacific nor the Latin American region, however, I am aware of their hard work and efforts to promote the Statement including presenting at conferences, developing templates for teaching the Principles, working with agencies to promote social work ethics, etc.

North American Region Ethics Commissioner Recommendation

We do not currently have a North American Region Commissioner. I would like to recommend Kim Strom. She has an extensive history of commitment to ethics in the North American region. She has published many books and received an Excellence in Ethics award from the National Association of Social Workers in 2015. She currently serves as the Director of UNC Office of Ethics Education and Policy Management, University of North Carolina, Chapel Hill, North Carolina and the Smith P. Theimann Jr. Distinguished Professor of Ethics and Professional Practice, School of Social Work, University of North Carolina, Chapel Hill, North Carolina. She also works with The Social Work Ethics Research Group and helped to develop the recent survey on COVID 19. Her resume was submitted to Rory in a separate email. Thank you.

Dawn M. Hobdy, IFSW Global Ethics Commissioner

Commissions

Human Rights Commission

Respect for human rights is fundamental to social work and the key motivation behind setting up the Human Rights Commission. The Commission, with its regional representatives, monitors and protects as far as it can the rights of social workers who may be endangered for supporting vulnerable populations or individuals.

[Read more about the Human Rights Commission.](#)

Latest Statements

[IFSW Statement On International Migrants Day](#)
[IFSW Statement On International Migrants Day](#)

[IFSW Statement On The United Nations Human Rights Day](#)

Commissioners

Global



Colleen Lundy
Global Commissioner

Africa Region

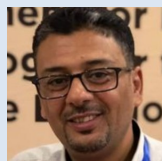


Kgomotso Jongman
Regional Commissioner



Charles Dra-ecabo
Regional Commissioner

Asia and Pacific Region

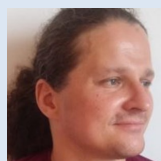


Raed Amira
Regional Commissioner



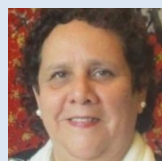
Luis Arévalo
Regional Commissioner

Europe Region



Marcin Boryczko
Regional Commissioner

Latin America and the Caribbean Region



Xanthis Suarez García
Regional Commissioner

North American Region



Mark Lusk
Regional Commissioner

Commissions

Human Rights Commission

I was appointed to head the IFSW Human Rights Commission in August 2018. As the Global Commissioner, I am honored to report on the work of the IFSW Human Rights Commission for the last two years. During this time, we have a number of accomplishments, as well as challenges and have been an active Commission.

Actions

Meetings

- Attended the Executive Meeting in Rheinfelden Switzerland (July 6 and 7th, 2019)
- Skype meeting with Rory Truell, Silvana Martinez and Lola Casal-Sanchez (Dec 11, 2019).
- Participated in regular meetings via Skype with The Israeli Censure Working Group (ICWG), a sub-committee of the IFSW Executive, which includes participation of the Human Rights Commissioner, and has the goal of addressing and hopefully resolving the Censure imposed on the Israeli Union of Social Workers in March 2018.
- Meeting with regional commissioners via videoconferencing (June 18, 2020).

Documents

- Produced a description of duties and responsibilities of regional commissioners.
- Prepared a Human Rights Commission Report for the Executive Meeting in Rheinfelden in July 2019.
- Regional Human Rights Reports are now posted on the IFSW web site.

Statements

- The HRC prepared a number of statements either recognizing the international days currently observed by the United Nations or responding to current human rights violations. These include:
- December 9, 2018 Statement on Human Rights Day (with Secretary-General Rory Truell and President Silvana Martinez)
- November 28, 2019 International Day of Solidarity with the Palestinian People
- December 10, 2019 Statement Regarding International Human Rights Day.
- December 18, 2019, International Migrants Day
- January 18, 2019. Statement Regarding the Deepening Crisis and Human Rights Violations in Zimbabwe

Commissions

Human Rights Commission

- Feb 3, 2019 Statement for Democracy, Social Justice, and the End of International Manipulation in Venezuela
- July 1, 2019 Human Rights Commission and Social Workers World-wide Take Action on US Mexico Border
- July 30, 2019. IFSW Human Rights Commission Statement Regarding Trafficking and Exploitation.
- May 6, 2020 Violence against Women Must End (with President Silvana Martinez)

Letters

- Letter to support a social worker, a president of a social workers union, who was charged for advocating on behalf of his members and fighting for their rights so that they can defend and protect the rights of the most vulnerable and marginalized.

Communication

- Communication with Michael Lynk, UN Special Rapporteur on the situation of human rights in the Palestinian Territory occupied since 1967.

Main Issues: Challenges and Achievements

Challenges

This is a deeply troubling time and human rights are under attack. The lethal, global pandemic has had an impact on all of us, albeit with differing challenges and resources depending on our geographic location and social, economic, and political conditions. At the same time, we witness the rise of extreme right political forces, ongoing armed conflict, increasing division between extreme wealth and poverty, erosion of democratic processes and massive migration of refugees. Many around the world struggle to stay alive.

All this is in the context of the deepening climate crisis with extreme weather resulting in typhoons, floods, wildfires, and drought. Many are experiencing food insecurity, starvation, and water shortages. Also, the pandemic has exposed, and intensified society's inequalities and the hardship for many has increased enormously.

But for all of these injustices there is resistance. Social workers have joined the recent mass mobilization against racial injustice that was initiated in the USA and spread to cities around the world. Social workers are taking action to uphold human rights, their own and those of their

Commissions

Human Rights Commission

clients. In some areas, the rights and lives of social workers are threatened.

These conditions present immense challenges for social workers in all five regions and for the work of the regional human rights commissioners.

Achievements

All regions now have commissioners, and each is engaged in responding to human rights concerns in their area. The regional human rights reports are now posted on the IFSW web site. Collectively we have developed an action plan for the coming year. European Regional Commissioner Marcin Boryczko approached the Social Workers Forum in Poland (The National Assembly of Social Workers) to have Human Rights in Social Work Practice as a main theme of the 2020 annual meeting/conference. They agreed. He also surveyed social workers internationally on human rights in social work practice and a report will be forthcoming.

Planning for the Next Two Years

- Quarterly Meetings of the regional commissioners will facilitate the work of the HRC.
- In the fall of 2019, I joined preliminary discussions with Rory Truell and Priska Fleischlin (IFSW UN Commissioner)

regarding the development of a practitioner's guide to replace the 2000 Manual on Human Rights and Social Work. The plan is to continue this work in the next two years with a planned production date of 2022 for the new manual/book. I will engage the HRC in the process.

- Regional Commissioners identified the need for curriculum resources on human rights practice and this also will be a focus of our work.
- Connect with others advocating for human rights i.e. IASSW and Amnesty International.
- Contact UN Special Rapporteurs as needed regarding human rights violations.
- Continue issuing statements to highlight human rights concerns and social work response and the regional commissioners will be engaged in this process. The Commission also will attempt to issue these statements into the international media so that the social work voice can inform others.

I encourage you to contact the human rights commissioner for your region with human rights concerns and/or ideas of how the Commission can be more effective. In closing, I send you greetings of solidarity.

Colleen Lundy, IFSW Global Ethics Commissioner

Commissions

United Nations Commission

IFSW has been granted Special Consultative Status by the Economic and Social Council (ECOSOC) of the United Nations and the United Nations Children's Fund (UNICEF). In addition, IFSW is working with the World Health Organization (WHO), the Office of the United Nations High Commissioner for Refugees (UNHCR), the Office of the United Nations High Commissioner for Human Rights (OHCHR). The commission supports IFSW representatives and IFSW members to act as facilitators and bridging the gaps between community's aspirations and UN agendas. At the same time, the knowledge of the UN's work shall flow back to the IFSW board and the IFSW members with the goal to create a partnership and realising a social change.

[Read more about the UN Commission.](#)

Latest Activities

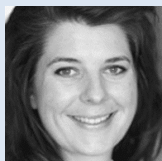
[Meeting Of IFSW Asia Pacific Representatives To The UN In Bangkok](#)

[IFSW Calls For Urgent Climate Action At The UN ESCAP](#)

[IFSW Participates In The 10th World Urban Forum](#)

Commissioners and Representatives

Global



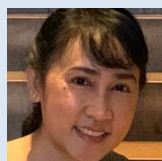
Priska Fleischlin
Global Commissioner

Africa Region

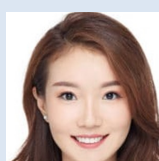


Charles Mbugua
Regional Commissioner

Asia and Pacific Region



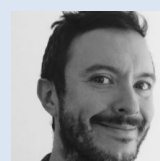
W. Kotbungkair
Regional Commissioner



Zhe Wang
Representative



Sup Pyo Kim
Representative



Sebastian Cordoba
Representative

Commissions

United Nations Commission

Commissioners and Representatives

Asia and Pacific Region (cont.)

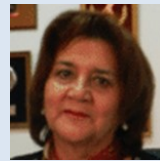


Jude Douglas
Representative



Suresh Pathare
Representative

Latin America and the Caribbean Region



Alicia Yanez Merino
Regional Commissioner

Europe Region



Swetha R. Dhananka
Regional Commissioner



Bruno Keel
Representative



Klaus Kühne
Representative



Tobias Roosen
Representative



Pascal Rudin
Representative



Herbert Paulschin
Regional Commissioner

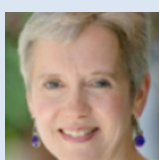


Silvia Franke
Representative

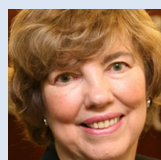
North America Region



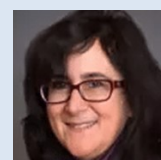
Michael Cronin
Regional Commissioner



Robin S. Mama
Representative



Elaine Congress
Representative



Anne C. Deepak
Representative

Commissions

United Nations Commission

The General Meeting 2018 endorsed building a new commission that spans the activities of all IFSW representations to the UN Headquarters and offices. In a nutshell, during the last two years, the Commission has been extended and now has representatives in every continent. As a next step, the partnership within the commission and with UN Agencies shall be further expanded and strengthened.

Two years of development



In South America, the region announced and supported Ms. Alicia Yanez Merino to represent IFSW in Santiago de Chile. In Asia Pacific, the Regional President announced the newly established positions during the Regional Conference. In partnership the selection was made and 7 people from different countries began their role in 2019/2020 and will work mostly remotely. Ms W. Kotbungkair will now lead the team and co-organize WSWD at the UN

office in Bangkok. In Geneva, all roles are filled. The European Regional board nominated Ms. Swetha R. Dhananka who will coordinate and co-organize WSWD at the UN Headquarters, Geneva. In Vienna, Mr. Herbert Paulischin has been nominated by the European Regional board and will lead the team in Vienna. Three positions are still vacant. In Nairobi, Mr. Charles Mbugua is a longstanding and experienced representative. At this time, IFSW Africa is still looking for additional team members given that the UN Environment has its Headquarters in Nairobi. In New York, one new representative has been found. IFSW is still looking for one additional representative and Mr. Michael Cronin is leading this team.

To sum up, within the last two years, 12 new representatives have begun their roles. In total, IFSW has 20 representatives and two student interns to the UN and yet still there is space for more.

Achievements

Over the last year, the UN Commission has prepared the Policy Paper on the SDGs. Various exchanges across regions have taken place and Statements have been submitted or signed (f.i. the CONGO Statement on CoVid-19). Various connections have been established and fostered such as to the WHO, OHCHR and other NGOs. IFSW has been actively represented at the

Commissions

United Nations Commission

UN Habitat in Abu Dhabi, at the High Level Political Forum on the SDGs, the indigenous forum, the conference on social development, World Health Organization, ILO, Office of the High Commissioner on Human Rights, UNRISD and various other UN Agencies.

Lesson learned



The most important lesson is: If representatives can attend conferences more often and meet more people, the more they can liaise and advocate for Social Work. But we all have limited resources. While it is a really rewarding volunteer position, it depends a lot on the individuals and their time, Connectivity and social recourses. Every achievement made is related to engagement – my warmest thanks to all! Furthermore, it is essential that every representative understands IFSW, broadening their social work perspective from a national to global view. The more people

who can exchange and learn about other IFSW national members, the better they can represent IFSW to the UN. The support of the IFSW President, the IFSW Global Board and the General Secretary and its office has been critical.

Steps ahead

The IFSW UN Commission's main focus is to promote the IFSW objectives and policies in the UN. The team has grown and so did the opportunities to partner within the Commission but also with UN Agencies. With regard to the proposed program for the UN Commission (General Meeting 2018), here is where we stand:

„Phase one: Building our Capacity

Build a global team, with sub teams in each region and the UN headquarters/offices. To develop a culture of planning and sharing information, jointly developing statements, providing guidance for and acting on behalf of the IFSW members and the communities they work within.”

In the next phases, the UN Commission will strengthen the collaboration among its members. Regular exchanges and coordination of activities and jointly developing statements are the proposed tools.

Commissions

United Nations Commission

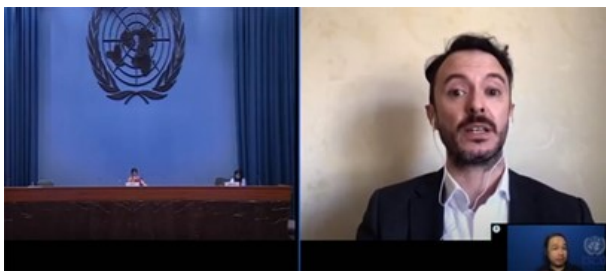
„Phase two: Building Capacity within the UN

Build awareness within the UN agencies that enables them to utilise a social work perspective in the development agendas. For example, forming partnerships with IFSW members, establishing a social work job description, co-creating campaigns on a global, national and local level. „

Now in phase two, the UN Commission will also working to increase the awareness, along with UN agencies, on social work—always in line with the social work definition, code of ethics and policy papers.

End of Year Updates

The commission is looking back to a year where we worked as a team of an unprecedented size and global collaboration.



Several regional virtual meetings have taken place. After a meeting with the regional commissioners with Rory Truell, the whole IFSW UN Commission (21 person in total) have had their first meeting - this international perspective is essential to represent the global perspective of IFSW.

In the regions:

The team in New York submitted written statements to the UN, the Bangkok team introduced itself to various organisations and already has given an oral statement during a regional meeting. The regional commissioner of Nairobi has been invited to represent IFSW at the UN Habitat where he represented IFSW as speaker in meetings. In South America, IFSW could be represented in IFSW regional conferences and the two European teams (Geneva and Vienna) have also participated and contributed to global UN Agencies and NGO Commissions.

While most events, such as our events (WSWD at the UN in Bangkok, Geneva and New York) could not take place, some UN events switched from present to virtual platform. The positive side is, that more people can attend, on the other hand, less personal contacts can be made.

All in all, the IFSW UN Commission has risen to a new stage with very engaged and professional members. The UN commission is looking forward to strengthen our teamwork in the coming year.

Several regional meetings have taken place.

Priska Fleischlin, IFSW Global United Nations Commissioner

Meet the Secretariat Team

Rory Truell

Secretary-General



Pascal Rudin

International Operations Manager



Lola Casal

International Relationship Manager



Bernard Mayaka

Administrator



2020 to 2030 Global Agenda for Social Work and Social Development Framework: 'Co-Building inclusive Social Transformation'

On 2 November 2020 IFSW in collaboration with its partners announced the conclusion of a two-year consultation process that sets the framework for the 2020 to 2030 Global Agenda for Social Work and Social Development. Due to the COVID-19 Pandemic, some partner organisations were not able to complete their consultation processes resulting in the announcement of only the first theme for the period 2020 to 2022. The remaining four themes covering the period 2022 to 2030 will be released in 2021. All the partner organisations express their greatest thanks to the many thousands of people who contributed to the consultation process.

The Global Agenda for Social Work & Social Development Framework for 2020-2030 is 'Co-building Inclusive Social Transformation'.

Describing this Framework, the partner organisations announced: Globally, nationally and regionally the professions of social work and social development together with our partners, will actively work with

people, communities and social movements to advance a 10-year agenda of:

'Co-building inclusive social transformation'

As global bodies with active membership in all countries, we recognize and commit to celebrating the strengths of all people and promoting their active role in leading sustainable development. We commit to working together to co-design and co-build thriving communities and societies for people and the environment.

Fostering the active participation of all voices, particularly those often marginalized, is at the core for the profession of social work and social development and is essential to co-design and co-build inclusive social transformation. This would include the development of new social agreements between governments and the populations they serve that facilitate universal rights, opportunities, freedom and sustainable well-being for all people nationally and globally. The role of the social work and social development in advancing and creating new platforms and

2020 to 2030 Global Agenda for Social Work and Social Development Framework: 'Co-Building inclusive Social Transformation'

spaces for all peoples, is of paramount importance for these new social agreements to emerge. The Global Agenda 2020-2030 is anchored in these commitments.

The partners further announced the first theme, 'Ubuntu: Strengthening Social Solidarity and Global Connectedness' will run from 2020 to 2022:

'Ubuntu: Strengthening Social Solidarity and Global Connectedness'

Guided by ethical principles, social work and social development practitioners and educators have an essential role to connect people, communities and systems; to co-design and co-build sustainable communities and to promote inclusive social transformation.

Ubuntu as a principle for enhancing social solidarity and recognizing global connectedness is central to shared and sustainable futures that highlight responsibility between all peoples and the environment. It lays the foundation for the promotion of an inclusive process of developing new social agreements between governments and the populations they serve. The new social agreement to emerge is aimed at facilitating universal rights, opportunities,

freedom and sustainable well-being for all people nationally, regionally and globally.

Ubuntu has been popularised across the world by Nelson Mandela and is generally interpreted as meaning 'I am because we are'. A word, concept and philosophy that resonates with the social work and social development perspectives of the interconnectedness of all peoples and their environments. Ubuntu also highlights indigenous knowledge and wisdom and we invite all nations and populations to use an equivalent word or concept that speaks to your culture in promoting this theme: 'Ubuntu: I am because we are'.

The [2021 World Social Work Day Poster](#) highlighting the theme 'Ubuntu World Social Work Day Poster' is available for all organisations to download and co-brand.

More infos

To read more about the Global Agenda, please visit our [Global Agenda info hub](#)

Projects and Programs

Climate Justice Program

The IFSW Climate Justice Program (CJP) is for anyone and everyone – social workers, friends, family, colleagues, companies, universities, etc. Please help us share it widely!

Aims of the CJP

Educate — ourselves and others

Advocate — for changes in policies and practices

Be the Change We Wish to See in the World — by reducing our harmful impacts that lead to climate injustices and supporting projects that create local solutions in communities most impacted by climate injustice.

[Read more on the CJP Website](#)

What is climate justice?

The climate crisis is directly connected to human activities and not merely due to normal patterns of nature. For example, people and ecosystems have endured water, land, and air contamination from industrial pollution and toxic agricultural practices, soil erosion, desertification, and species and habitat loss due to extensive deforestation, and an increase in frequency and intensity of disastrous weather patterns, such as typhoons.

IFSW Climate Justice Program



While the climate crisis impacts all of us, those who are marginalized or oppressed are experiencing it to an even greater extent, creating climate injustice for people and our planet. Much of the burden of unsustainable consumption patterns has fallen disproportionately on the most vulnerable people in the world, who typically have the smallest consumption patterns. In addition, these vulnerable people receive fewer of the benefits of the environmental resources. These collective patterns of unsustainable consumption contribute to the climate crisis, making it a global justice issue for people and the planet, this is known as climate injustice.

CONTRIBUTE

Free Online Course: Child Protection Management in Times of Covid-19



In the face of Covid-19, IFSW, together with a number of international advisors and contributors, including the Global Social Service Workforce Alliance, International Social Service and UNHCR, has developed an innovative free training course. This new, free, 3-4 hour online course is now available to anyone with a responsibility for responding to the protection and care of children. It will explore adapting child protection case management services during COVID-19 pandemic and started 29 June 2020.

Dr. Kathy Wehrmann, IFSW Corona Virus Response Officer, is a member of the taskforce of this Massive Open Online Course (MOOC). She says: *"It is important that during the COVID-19 pandemic, there*

is a collective response from child protection social workers alongside all other relevant service providers. Such a response ensures children's needs are addressed holistically. It is also important we understand how we might need to adapt our practices in response to the changing situation because of the pandemic."

Dr. Pascal Rudin, IFSW Representative to the United Nations, advocates for the rights of children at the UN in Geneva. He says: *"Infectious diseases like Covid-19 can disrupt the environments in which children grow and develop. This can have negative consequences for children's well-being, development and protection. In turn, it also affects those working to protect children. I am delighted that we can launch this important MOOC that will help social workers to strengthen their knowledge and to adapt their responses to a fast changing environment."*

Backed by leading international humanitarian and children's rights organisations, the course is informed by the expertise and experience of young people, professionals, volunteers, and academics. Learners will be able to share ideas and examples of practice with others across the world.

The course is available in [Arabic](#), [English](#), [French](#) and [Spanish](#).

Free Course on Children Moving Alone now Accounting for Covid-19



All around the world, thousands of children are travelling across and between borders as unaccompanied and separated children. Different countries may respond to the needs of these children in different ways, but the concern for children on the move is a global one. More than 20 organisations, including IFSW, ISS, UNICEF, and UNHCR, have come together to design a course for social workers and others concerned with the welfare of children.

The course will equip learners with an understanding of how to discern and respond to the needs, circumstances and wishes of unaccompanied and separated children on the move as well as those at risk of separation. This includes resources and information to support prevention of family/primary caregiver separation; pre-

vention of unnecessary placement of a child in alternative care; and, when such care is necessary, ensuring the availability of suitable alternative care.

Rory Truell, IFSW Secretary-General, highlights the role of Social Workers in this context: «*Children's Rights are universal – they do not stop at borders or in countries of transit and destination. This course really emphasises the key role of social workers in supporting, empowering and protecting children moving alone.*»

Pascal Rudin, IFSW Representative to the United Nations on Children's Rights, has been involved in the production and update of the course. He says «*Over 26,000 participants from more than 140 countries have already learnt how to offer the best possible alternative care, protection and support to the thousands of unaccompanied and separated children on the move. The course has now been adapted to include working in COVID-19 context.*»

Learners will be able to share ideas and examples of practice with other learners across the world. To make it widely accessible, the course is free of charge, can be studied on one's own pace and is available in four languages: [Arabic](#), [English](#), [French](#) and [Spanish](#).

The course started 2 November 2020.

Next run: **15 February 2021**

www.childrenonthemovemooc.com/

Popular Free Training for Social Workers on Alternative Care now Touches on Covid-19



In the face of Covid-19, IFSW, together with a number of international advisors and contributors, including Unicef and the International Social Service, has updated its innovative free training course on alternative care of children. Over 22,000 people, many of which are social workers, have already participated in the MOOC, which now accounts for the impact of COVID-19 in alternative care.

All around the world, for many different reasons, hundreds of thousands of children cannot live with their parents. The UN Guidelines for the Alternative Care of Children set out the principles for policy and practice that have been agreed upon globally to help towards tackling this issue. This free massive online open course (MOOC) delves into what the UN Guidelines look like in practice.

Rory Truell, IFSW Secretary-General, said: *"Due to the COVID-19 pandemic, it is possible that the number of child protection cases will rise. It is important to remember that international standards, such as the Guidelines for the Alternative Care of Children, and other human rights conventions, are still applicable during the pandemic. This updated course enables social workers around the globe to address the impact of COVID-19 in alternative care."*

Pascal Rudin, IFSW Representative to the United Nations, who is a member of the MOOC's taskforce, said: *"COVID-19 poses specific challenges and risks to children with regards to appropriate care both at the policy or system level and in work with individual children. This may lead to more children being at risk of separation from the care of parents, or other primary caregivers, and in need of alternative care. This MOOC has specifically been designed for social workers and other relevant service providers in the field."*

The course started on 21 September 2020.

This course is free of charge and available in [English](#), [French](#) and [Spanish](#). It was running for the fifth and final time for social workers and everyone interested in or responsible for children's care.

Study of the Ethical Challenges Faced by Social Workers During the Covid-19 Pandemic

The Social Work Ethics Research Group in partnership with the IFSW Ethics Commission, announces the publication of findings of an international study of the ethical challenges faced by social workers during the Covid-19 pandemic. The quick turnaround research which commenced in April was designed to shed light on the challenges social workers faced and continue to experience under COVID-19.

The report released today draws from 607 survey responses and additional follow-up interviews with participants from 54 countries. The research findings highlight strong commonalities on the challenges that social workers are facing as essential workers in the fight against COVID-19.

Rory Truell, IFSW Secretary-General, commented, *"Social workers throughout the world have taken swift action and played a significant role in reducing the effects of the virus. But there has been a high price to pay for workers at the frontline working in unsafe conditions, with minimal resources and without practice guidance policies. It was critically important that research was also quickly undertaken to highlight the realities of social work practice in this crisis. The findings of this study can now be used as an advocacy tool to support social work practitioners in their essential roles in combating this virus."*

Sarah Banks, Professor at Durham University, UK and the lead researcher from the

Social Work Ethics Research Group said, *"This research has uncovered some of the profound ethical dilemmas faced by social workers as they have continued to practice in pandemic conditions. From the challenges of maintaining privacy and doing fair assessments online to advocating for migrants in transit without food or sanitation, social workers have taken many risks, relying heavily on their own professional discretion. This report gives details of these ethical challenges, alongside recommendations for improving the conditions to support ethical practice in social work"*.

Dawn Hobdy, IFSW Ethics Commissioner, said, *"I'd like to congratulate those who developed this survey and express my appreciation for the participants. This survey experience has captured the fact that there are many similarities faced by social workers around the world as well as differences as we try to tackle the various dilemmas related to COVID 19. We are facing the same storm but perhaps with different boats. The ethical guidance and opportunities for advocacy that will be made possible as a result of this thoughtful survey are invaluable. I look forward to sharing the results and assisting professionals social workers, around the globe, with implementing these sound recommendations."*

[Download the Report Here.](#)

Global Standards for Social Work Education and Training

Preamble

The International Federation of Social Workers (IFSW) and the International Association of Schools of Social Work (IASSW) have jointly updated the Global Standards for Social Work Education and Training. The previous version of the Global Standards for Social Work Education and Training document was adopted by the two organisations in Adelaide, Australia in 2004. Between 2004 and 2019, that document served as an aspirational guide setting out the standards for excellence in social work education.

With the adoption of a new Global Definition of Social Work in July 2014, and the publication of the updated Global Social Work Statement of Ethical Principles in 2019, the Global Standards for Social Work Education and Training document should be updated to integrate the changes in these two documents and to reflect recent developments in global social work.

To this effect, the two organisations created a joint task group comprising the IFSW Interim Global Education Commission and IASSW's Global Standards Taskforce. This task group engaged with the global social work community through a rigorous consultation that lasted for over 18 months and included feedback from 125 countries represented by 5 Regional Associations and approximately 400 Universities and

Further Education Organisations. In addition, members of the joint task force facilitated two international seminars involving service user representatives.

Therefore, we are content that the present document has been the product of a dynamic and collective process. It has also been the culmination of a rigorous exploration of epistemological, political, ethical and cultural dilemmas.

The main objectives of the Global Standards are to:

Ensure consistency in the provision of social work education while appreciating and valuing diversity, equity and inclusion.

Ensure that Social Work education adheres to the values and policies of the profession as articulated by the IFSW and IASSW.

Support and safeguard staff, students and service users involved in the education process.

Ensure that the next generation of social workers have access to excellent quality learning, opportunities that also incorporate social work knowledge deriving from research, experience, policy and practice.

Nurture a spirit of collaboration and knowledge transfer between different social work schools and between social work education, practice and research.

Global Standards for Social Work Education and Training

Support social work schools to become thriving, well-resourced, inclusive and participatory teaching and learning environments.

While appreciating the overarching objectives, we are also mindful of the fact that the educational experience and policy framework in different countries varies significantly. The Global Standards aim at capturing both the universality of social work values and the diversity that characterises the profession through the articulation of a set of standards that are divided between compulsory (those that all programmes must adhere to) and aspirational (those standards that Schools should aspire to include when and where possible). The former represents foundational elements, which are intended in part to promote consistency in social work education across the globe.

Professor Vasilios Ioakimidis
Professor Dixon Sookraj

Rationale

We took the following realities of social work across the globe into account in developing the standards:

Diversity of historic, socio-cultural, economic and political contexts in which social work is practiced, both within countries and across the globe.

Diversity of practices according to: 1) practice setting (e.g. government, NGO, health, education, child and family services agencies, correctional institutions, other community-based organizations and private practice settings); 2) field or area of practice (e.g. population served, type of personal and social, economic, political and environmental issues addressed); and 3) practice theories, methods, techniques and skills representing practice at different levels – individual, couple/family, group, organization, community, broader societal and international (i.e., micro, mezzo and macro levels).

Diversity of structures and delivery methods of social work education. Social work education varies in terms of its position within the structures of education institutions (e.g., units, departments, schools, and faculties). Some social work education programs are aligned with other disciplines, such as economics and sociology, and some are part of broader professional groupings such as health or development. In addition, the level, attitudes toward, and integration of distance education and online learning vary a great deal among programs.

Diversity of resources available to support social work education, including social work educators and directors across the globe.

Global Standards for Social Work Education and Training

Diversity in levels of development of the social work profession across the globe. In many countries, it is a well-established profession backed by legislation and accompanying regulatory bodies and codes of ethics. A recognized baccalaureate social work degree is often the minimum educational requirement for professional practice. These mechanisms serve in part to protect the use of the title of 'social worker', define the scope of practice (what social workers can or cannot do in practice), ensure that practitioners maintain competence and protect the public from harm by social workers. In other countries social work takes different forms. Social work educational programs may be added to existing curriculum offerings rather than standing as separate academic units. They may range from individual course offerings, to one-year certificate programs, to two-year diploma programs. The curriculum standards presented in this document apply primarily to social work degree programs. Shorter certificate and degree programs may use the standards, but they may not be able to incorporate all the standards.

The adverse effects of colonization and educational imperialism on the development of social work in the Global South. We believe and stand firm that the theoretical perspectives and practice methods, techniques and skills developed in the Global

North should not be transported to the Global South without critical examinations of their suitability and potential effectiveness for the local contexts.

The growing number of common issues and challenges affecting social work education and practice across the globe. These include growing inequalities produced by neoliberal globalization, climate change, human and natural disasters, economic and political corruption and conflicts.

Many new developments and innovations, especially those relating to sustainable development, climate change and UN's Sustainable Development Goals, are occurring in the Global South. Thus, connecting the global and the local within the curriculum would strengthen the academic preparation of social workers everywhere; it will facilitate assessments for transferability of social work education across jurisdictions, including international borders; it will also help strengthen students' professional identities as members of a global profession.

Finally, curriculum specializations' contribution to fragmentation in education and practice. Regardless of the area of specialization delivered in the curriculum, the program should prepare students to understand the interconnectedness of practice at all levels – individual, family, group, organization, community, etc. (i.e., micro, mezzo, macro). This broader understand-

Global Standards for Social Work Education and Training

ing will help students to become critical, ethical and competent practitioners.

This version of the Global Standards is organised around three overarching domains that capture the distinct, yet intertwined, elements of Social Work education: **The School, The People and The Profession**.

Joint Taskforce

IFSW Interim Education Commission

Chair: *Vasilios Ioakimidis*

Members:

African Regional Commissioners:

Lawrence Mukuka and Zena Mnasi

Asia and Pacic Regional Commissioner:

Mariko Kimura

European Regional Commissioner:

Nicolai Paulsen

Latin American and Caribbean Regional Commissioner:

Marinilda Rivera Díaz

North American Regional Commissioners:

Dr. Joan Davis-Whelan and

Dr. Gary Bailey

IASSW Global Standards Taskforce

Chair: *Dixon Sookraj*

Members:

Carmen Castillo (COSTA RICA): Member, Latin American Rep.

Karene Nathaniel-DeCaires (TRINIDAD & TOBAGO): Member, North American/ Caribbean Rep.

Liu Meng (CHINA): Member, China National Rep.

Teresa Francesca Bertotti (ITALY): Member, European Association Rep.

Alexandre Hakizamunga (RWANDA): Member, African Association Rep.

Vimla Nadkarni (INDIA): Member, Past IASSW President

Emily Taylor (CANADA): Student Rep.

Ute Straub (GERMANY): IASSW Co-Chair & Board Representative

Consultants:

Carol S. Cohen (USA): Commission on Group Work in Social Work Education of the International Association for Social Work with Groups, Co-Chair.

Shirley Gatenio Gabel (USA). Journal of Human Rights and Social Work, Co-Editor

Varoshini Nadesan (SOUTH AFRICA). Association of South African Social Work Education Institutions, President.

More Information

[Read the full policy here](#), including its three overarching domains: The School, The People and The Profession .

High-Level Meeting Between IFSW and the UN on Advancing Social Development



The Deputy Secretary-General of the United Nations, Amina Mohammed and IFSW Secretary-General Rory Truell spoke yesterday on strategies for advancing social development during and beyond COVID-19. The video meeting took place at the request of UN Secretary-General António Guterres.

Amina Mohammed commenced the meeting by relaying the UN Secretary-General's and her own appreciation to social workers globally for their work at the front-line of development. *'We owe them our thanks'* she said.

Ms Mohammed described the world in a state of 'development emergency' with the pandemic pushing more people into poverty and uncertainty. She recognized the important role of professional associations which have local knowledge of communities as well as local and national governments and their key role in the development agendas. *'If you don't work at the local community level you don't have a foundation to build upon'* she said.

Rory Truell noted that social work professionals are deeply connected to communities and societies throughout the world. *'Social workers recognize communities'*

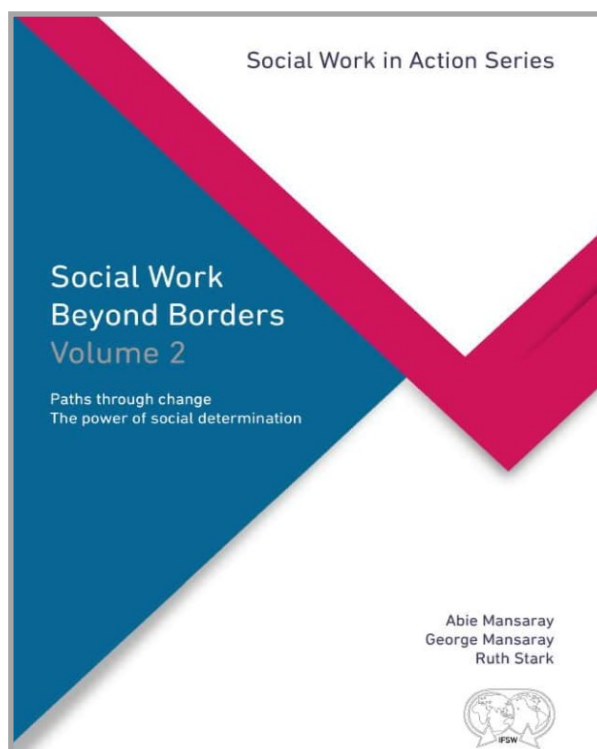
strengths and informal systems of care and we assist them to develop further capacity to lead their way own way out of poverty and exclusion and to new futures of social and economic development'. 'Yet it is essential', he said, 'that community aspiration and the facilitating role of social work is clearly linked to the global sustainability agendas'. He further spoke on the importance of expanding formal social protection systems (social welfare) as well as reshaping welfare to focus on real community needs, rather than policy objectives which have often been developed away from communities.

Silvana Martinez, IFSW President, commented: *'This important meeting reflected the outcomes of the IFSW consultation for the 2020-2030 Global Agenda for Social Work. This meeting advanced the need to co-build social transformation with communities, especially vulnerable people, along with local, national and global policy. The meeting also affirmed the critical importance of social work to every society in advancing all people's rights. We welcome working with the United Nations and all partners and co-building a world build on equality and social, economic & environmental sustainability'.*

More Partnerships

Please find more information about our partnerships [here](#).

Social Work Beyond Borders: Volume 2



This volume is a report of social work in action. It is a snapshot from a journey that we are travelling together. It has been a complex path we follow as western and indigenous social work start a conversation. It explores how our global profession might be able to create and innovate ways to achieve the vision of the IFSW policy on the Role of Social Work in Social Protection Systems (2016). It takes evidence from practice, of the development of different approaches to the role of social work as we move forward into the next stage of the Global Agenda 2020-2030.

It is shared with you as part of our growing library of social work knowledge and practice wisdom. This is therefore not per se a textbook of social work practice, but a volume collected from different experiences. You will read this in the styles of

the authors that reflect our cultural backgrounds, part of our identity. Some of it will be familiar, but we hope that you will also find something new to reflect upon. We have not edited our cultural diversity out, so you will move from one style to another, this is part of the story.

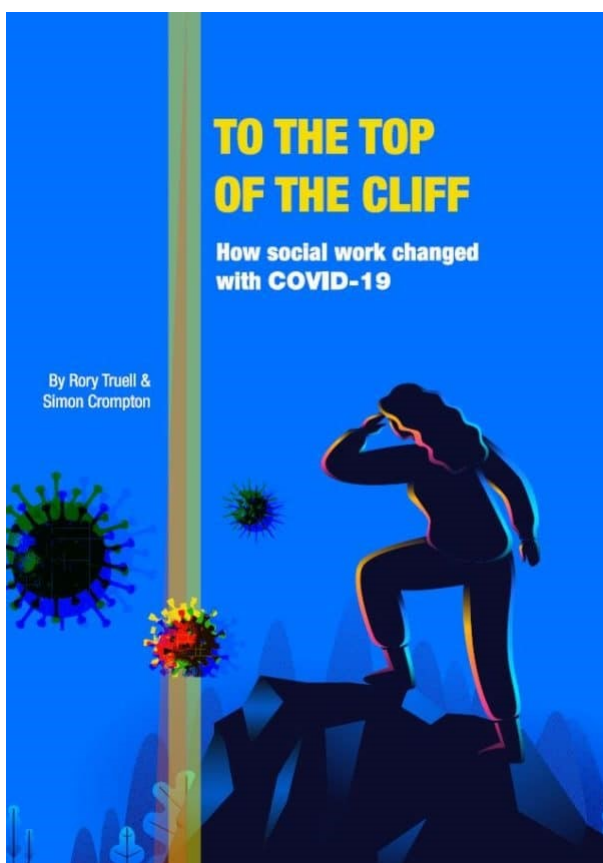
[Download your free copy here.](#)

The Social Work in Action Series

IFSW has created a publishing space for social workers to report and reflect on their practice contexts. Practitioner perspectives are often overlooked by academic publishers that require a particular writing style and a requirement that the contribution relates to other academic writings. This at times can be different from the daily realities of social work which brings together the unique aspirations and challenges in people's lives, with the profession's research, theory, principles and also social worker's own practice wisdom.

The Social Work in Action Series enables practitioners to publish accounts of their work and their realities, adding further shared learning opportunities as globally we collaborate to advance the social work profession and achieve social transformation.

To the top of the Cliff: How Social Work Changed With Covid-19



The rise of COVID-19 prompted social workers to be creative, to think of new ways of making their services and values effective. It sparked a culture of transformation in social services, which in turn helped transform lives under the most difficult of circumstances. The old structures could no longer function and this gave social workers a form of liberation. They got back to the roots of social work – going out into communities and supporting them to help themselves.

A powerful analogy was made during the IFSW Conference in July 2020, as social workers reflected on what had happened

during the past six months. The old structures had increasingly pushed social work into a crisis management role, picking up the pieces at the bottom of the cliff. Where they always should have been, it was pointed out, was at the top of the cliff, heading off disaster before it happened. This was to be achieved by working through and with communities. The pandemic had revived this kind of community based social work.

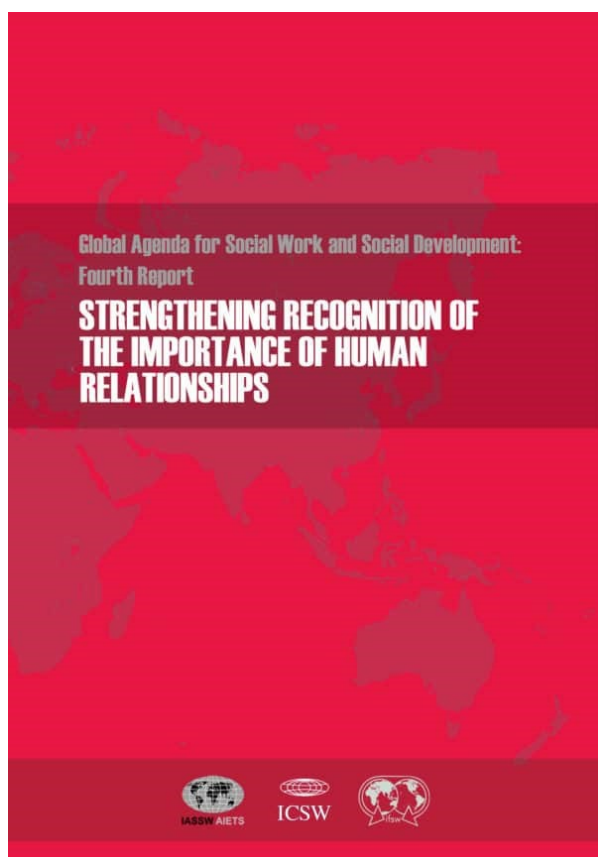
This booklet charts the continuing transformation of social work, from the first outbreaks of COVID-19 in China in January 2020 to the new global strategy for the profession agreed at the IFSW conference in July – a set of priorities which made manifest the new sense of purpose developing in social work as a result of COVID-19.

The publication serves partly as a historical archive of what has happened. We hope it will also provide inspiration, helping social workers move forward with the new global strategy in mind. It is a first outline of what the new global social work looks like, providing examples and ideas to develop further with the new goals in mind.

The social work profession will have many challenges in advancing this transformational strategy. If the profession acts together, and in partnership with the communities we serve, it will become a reality.

[Download your free copy here.](#)

Global Agenda for Social Work and Social Development: Fourth Report



Strengthening recognition of the importance of human relationships is the fourth pillar of The Global Agenda for Social Work and Social Development. The significance of human relationships is central to social work values and at the heart of practice, whether direct work with individuals, engagement with communities or macro-social work with politicians and policy makers. This theme is not a new concept for social work but many in prac-

tice and in the literature talk about 'rediscovering' relationship-based social work. This is in part a reaction to the impact of 'managerialism' on social work agencies, sometimes putting money before people, but also reflects a wish to rebuild human relationships after the pain of the pandemic lockdowns.

This is the fourth of a series of four connected reports on The Global Agenda for Social Work and Social Development from IASSW, ICSW and IFSW. It presents the findings of five Regional Observatories that have examined social work and social development practice around the world. These observations are set in the context of social, political and economic realities of 2018-2020 and were mainly collated before the full impact of the coronavirus pandemic.

This report is the last in the series covering 2010-2020 so it also includes reflection on the global impact of The Global Agenda on social work practice, research and organisation as well as on our associations, schools of social work and policy environments.

Editor:

David N Jones

[Download your free copy here.](#)

Publications

International Journal of Social Work

Journal

IASW, ICSW and IFSW jointly own the journal published by Sage: International Social Work. In 2019 the number of submissions increased for the fifth years running, from 159 in 2015 to more than 200 new original submissions. In 2019, the number of original submissions was 211 and the revised submissions was 165.

The rate of acceptance in 2019 was 36% (in 2018 it was 41%).

In 2019, there were 6 issues and there were 10,932 total circulation. 268,907 full-text downloads in 2019 and in 2018 there were 22,739 full-text downloads.

Geographical spread of papers is wide showing the journal has international reach. In 2019 we saw an increase in papers from Canada, China, Estonia, Hong Kong, Nigeria, Turkey, the UK and the US, but fewer submission from Korea, Norway, and Spain.

In 2019, the number of original choices from practice papers was 40% more than in 2018.

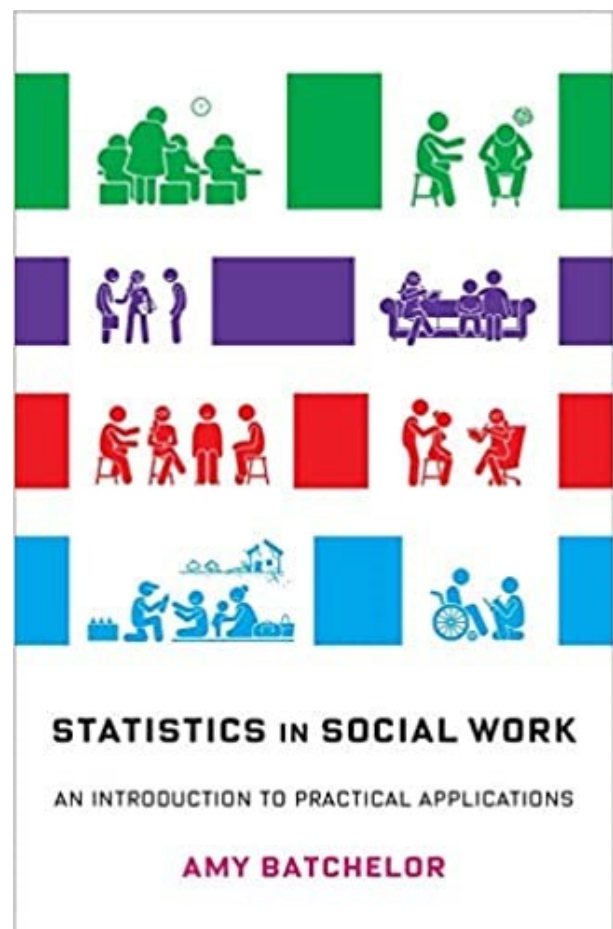
The International Social Work Prize Winner 2019 was "[Social work in East Africa: A mzungu perspective by Helmut Spitzer](#)".

[See more articles with open access.](#)

ISW Book Reviews

A new look book reviews page was launched on our website, people can also do peer reviews. You can find more information on how submit contributions to ISW book reviews [here](#).

Latest book review: [Statistics in Social Work: An Introduction to Practical Application](#)



Governance

Executive Committee

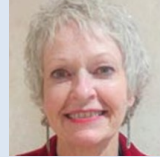
Global



Silvana Martinez
President



Rory Truell
Ex Officio Member



Rose Henderson
Vice President



Victor I. Garcia-Toro
Treasurer

Africa Region

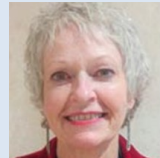


Noel Muridzo
Regional President



Joachim Mumba
Regional Vice President

Asia and Pacific Region



Rose Henderson
Regional President



Sriganesh MV
Regional Vice President

Europe Region



Ana Radulescu
Regional President

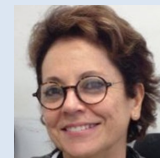


John Brennan
Regional Vice President

Latin America and the Caribbean Region



Larry Alicea Rodríguez
Regional President

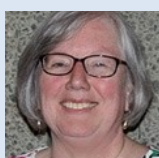


Tania Maria Ramos
Regional Vice President

North America Region



Mildred Joyner
Regional President



Joan Davis-Whelan
Regional Vice President

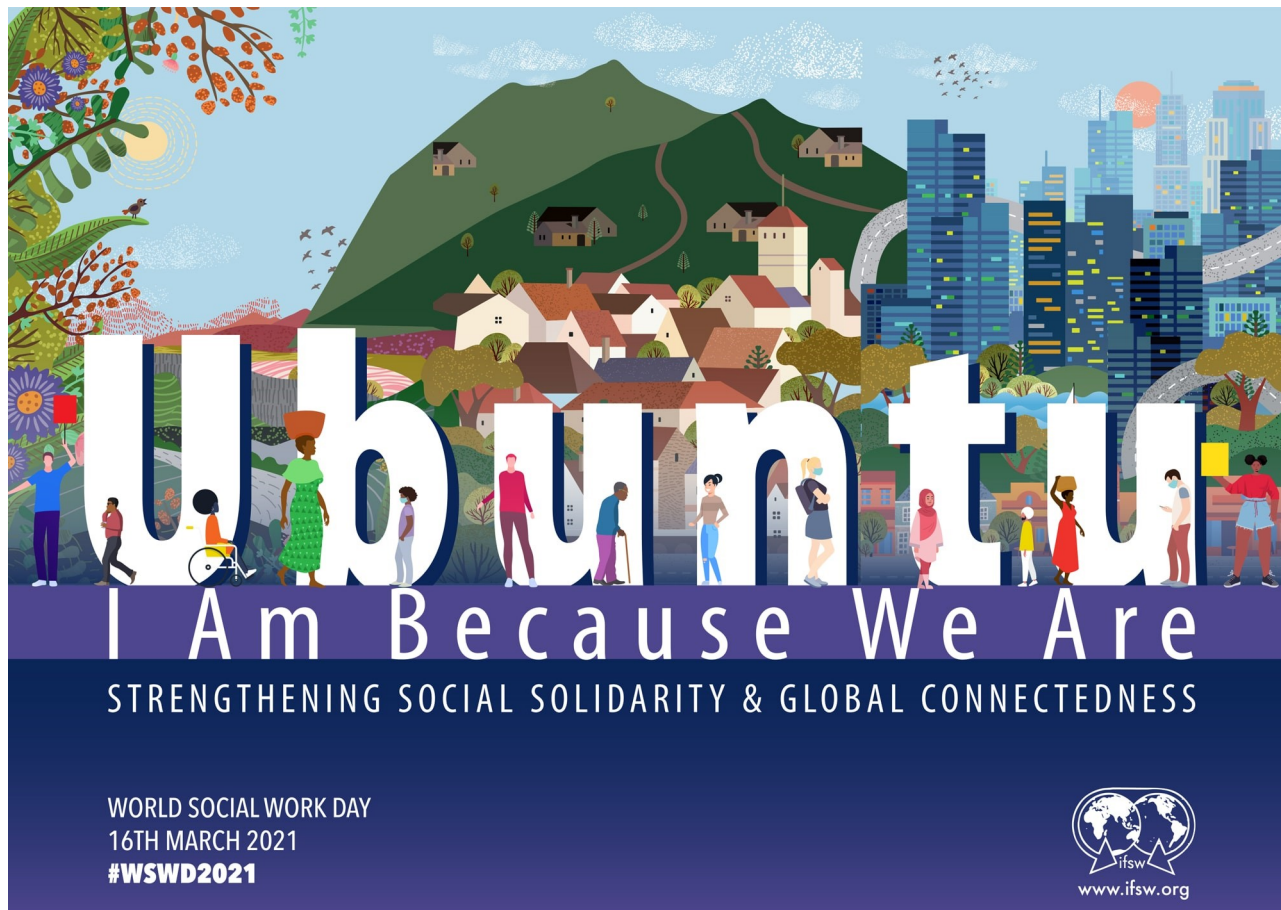
Read more about the strategic aims
and the regulations of IFSW:

Constitution: [English](#), [French](#), [Spanish](#)

By-Laws: [English](#), [French](#), [Spanish](#)

Events

Upcoming Events



IFSW's activities at the national, regional and global levels did not cease under the 2020 COVID-19 conditions. All events went online and meetings continued via video formats. The use of these electronic forums has assisted the Federation to increase equal participation from members and partners throughout the world. We are committed to maintaining this high and growing level of participation where all voices can be heard. Future events will therefore have the possibility to join online. We are currently developing capacity for future conferences to be organised as hybrid events, enabling people who can travel to meet face to face while others

who face the barriers of pandemics, visa restrictions and excessive cost to fully participate via the Internet.

In 2021 there will be conferences or gatherings in the African, Asia-Pacific, European, Latin American regions. The first to be confirmed is the hybrid event of the IFSW European Region that will be hosted by Croatian Association of Social Workers on the 8th to 10th October. Please watch the IFSW news for further announcements of conferences and gatherings.

Read more about upcoming events here:
<https://www.ifsw.org/events/>

Statistics

Communication

Social networks are an invaluable tool to spread news and advocate for IFSW's mission. IFSW has accounts on Facebook, Twitter, Youtube and Instagram.

Our social media audience is contributing to the wider reach and in profiling the

work of the Federation regionally and internationally and allows us to strengthen the bonds with our members organizations, IFSW friends, and our partners. It also offers the opportunity to interact with our most direct target audience, our future members.



1,845,832

Pagewiews

563,156

Visitors

240

New Posts/Pages



16,958

Followers

15,650

Likes

615

Posts



20,054

Profile visitors

9,611

Followers

677

Tweets



10,668

Likes

2,125

Followers

286

Posts



8,633

Visitors

1,200

Followers

314

Mentions



32,569

Views

1,210

Subscribers

56+

Videos



36,680

Subscribers

138

News Items

53

Issues



583

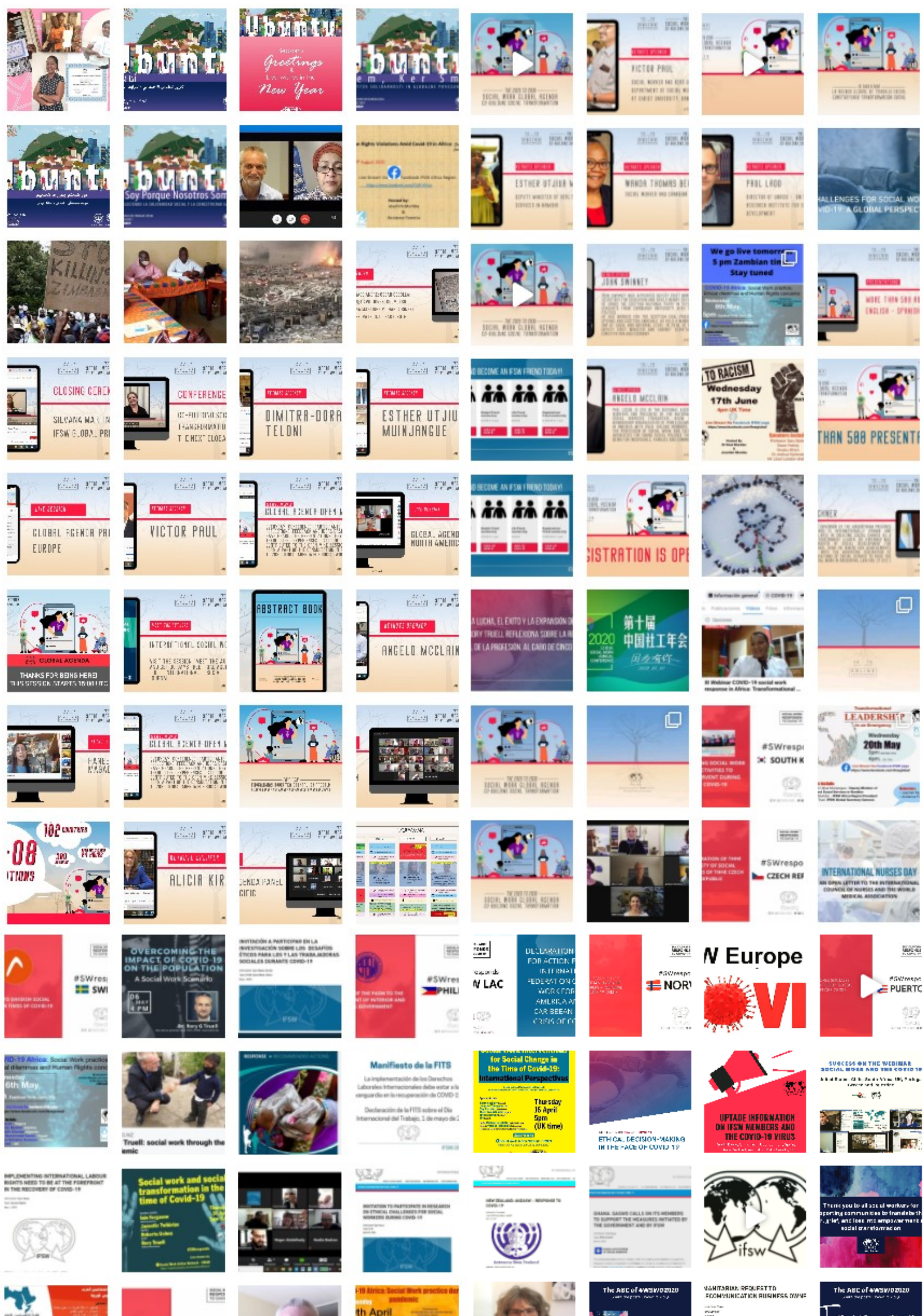
Total Friends

137

New Individual

106

New Student



Follow us!



Copyright © 2021 by IFSW

Thank you!

Please accept our appreciation of your continuing interest in and contribution to IFSW! Sign up to our newsletter and never miss any IFSW news!

SIGN UP

