



INTERNATIONAL FEDERATION OF SOCIAL WORKERS
FÉDÉRATION INTERNATIONALE DES ASSISTANTS SOCIAUX
FEDERACIÓN INTERNACIONAL DE TRABAJADORES SOCIALES

EASSW

European Association of Schools of Social Work

U.F.A.S.

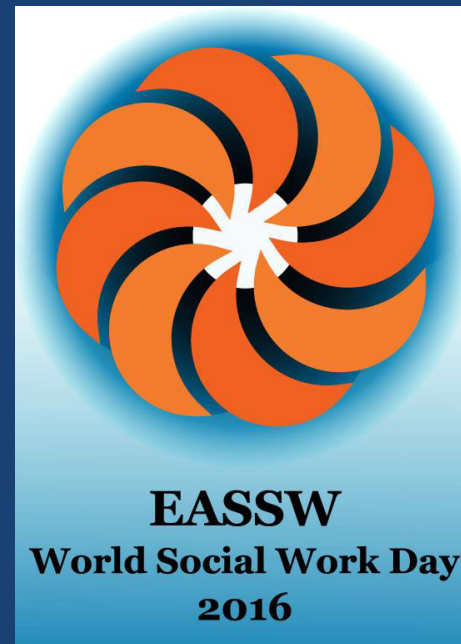
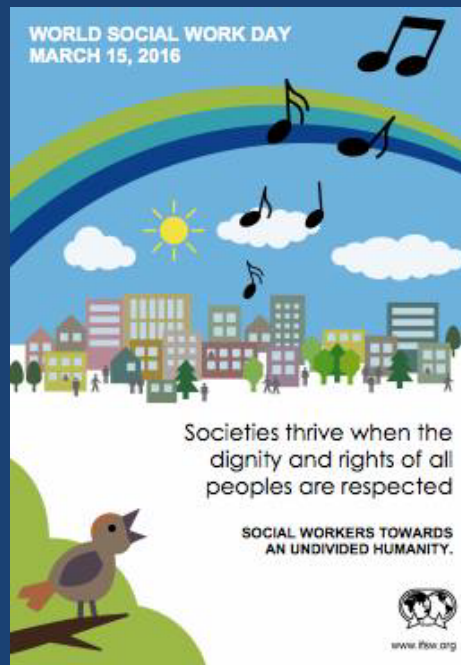
Working in Partnership to Promote the **Rights, Dignity and Worth** of Refugees in Europe

Celebrating World Social Work Day
in Belgium | **14th March 2016**
10:00 – 15:30

European Economic and Social Committee

EESC, Room:
VMA3, Rue Van Maerlant 2, 1040
Brussels, Belgium

This event was made possible with kind support from:



ORGANISED BY:

- > **The International Federation of Social Workers European Region (IFSW Europe)**
- > **The European Association of Schools of Social Work (EASSW)**
- > **Union Professionnelle Francophone des Assistants Sociaux (UFAS)**

Working language for the morning: **English**
(Simultaneous interpretation into **French**)

Working language for the afternoon: **French**

REGISTRATION*

Please fill the attached form and send an email to:

Janine Renier
renier.janine@gmail.com

* **Please get to the venue in good time** to clear security and start the event on time. Remember to bring your ID card, as this is required for entry to the EESC.



INTERNATIONAL FEDERATION OF SOCIAL WORKERS
FÉDÉRATION INTERNATIONALE DES ASSISTANTS SOCIAUX
FEDERACIÓN INTERNACIONAL DE TRABAJADORES SOCIALES

E A S S W

European Association of Schools of Social Work



Working in Partnership to Promote the **Rights,** **Dignity** and **Worth** of Refugees in Europe

Celebrating World Social Work Day
in Belgium | **14th March 2016**
10:00 – 15:30

European Economic and Social Committee

EESC, Room:
VMA3, Rue Van Maerlant 2, 1040
Brussels, Belgium

This event was made
possible with kind
support from:



PROGRAMME

Working language for the morning: **English**
(Simultaneous interpretation into **French**)

09:15 Registration*

10:00 Welcome and Introduction

> Mr Ian Johnston (Scotland)
IFSW Europe – Representative to the
European Social Platform
THE OBJECTIVES OF THE ORGANISATION
OF THE EVENT - THE CONTRIBUTORS AND
FORMAT

CHAIR FOR THE MORNING

> Mrs Liliane Coccozza (Belgium)
President of UFAS – Delegate of ESAN in
Brussels
THE ACTORS OF THE SOCIAL ACTION
TOWARDS THE RECEPTION AND
INTEGRATION OF REFUGEES

CHAIR FOR THE AFTERNOON

10:10 Mr Nino Zganec (Croatia)

President of the European Association of
Schools of Social Work
STUDENTS IN SOCIAL WORK EDUCATION:
IMPORTANCE OF TAKING ACCOUNT OF
THE DIFFERENCES BETWEEN PEOPLES
AND RESPECT FOR THE VALUE AND
DIGNITY OF EACH OF THEM

10:20 Mr Moreno Diaz (Spain) - EESC

Representative of the European Economic
and Social Committee

10:30 Ms. Jana Hainsworth (Belgium)

President of the European Social Platform
ROLE OF NGO'S CIVIL SOCIETY: THE

SOCIAL PLATFORM'S MESSAGE TO
REFUGEES AND RESPONSE TO THE
FACILITATION DIRECTIVE

10:40 Ms. Anna Metteri (Norway)

President of the Nordic Association of
Schools of Social Work

10:50 Ms. Josefine Johansson (Sweden)

IFSW Europe - Member of the Executive
Committee
ROLE OF SOCIAL WORKERS TO PROMOTE
THE DIGNITY AND WORTH OF REFUGEES
AND MIGRANTS

11:00 – 11:30 Coffee break

11:30 – 12:30 Broader debate with participants

WHAT MEASURES ARE NECESSARY TO ENSURE
THE SAFETY AND WELFARE OF REFUGEES IN
THE FUTURE?

12:30 – 14:00 Lunch

Working language for the afternoon: **French**

14:00 Workshops

Three groups - Three themes articulated

- 1> TO BE TRAINED TO BETTER
COOPERATE...
FROM TRANSFORMATION TO ACTION
- 2> MEDIA - STEREOTYPES - PREJUDICE
- 3> TO INNOVATE – «DEVELOPING THE
POWER TO ACT»

15:00 Plenary session - Reports of workshops

15.15 Message to the ECOSOC of the United Nations

15:30 Closing remarks

* **Please get to the venue in good time** to clear security and start the event on time. Remember to bring your ID card, as this is required for entry to the EESC.

CESE CdR **EESC CoR**

REM Rue du Remorqueur
Stoomsteperstraat

BVS Bertha von Suttner :
Rue Montoyer 92-102 Montoyerstraat

JDE Jacques Delors
Rue Belliard 99-101 Belliardstraat

VMA Rue Van Maerlant 2
Van Maerlantstraat 2

Maelbeek / Maalbeek

Schuman

Parc Léopold / Leopoldspark

Les données représentées sont telles que communiquées par le gestionnaire concerné.
The following data was made available by the issuer.

Légende / Legende

	Entrée du bâtiment Entrance of the building		Sortie de métro + numéro Exit metro + number
	Équipements cyclables Cycle facilities		CAMBIO - Voiture partagée CAMBIO - Carsharing
	Accessible aux PMR Accessible to PMR		Villoi! - Vélo partagé Villoi! - Cyclesharing
	Parking vélos Cycle park		Taxis
	Livraisons Delivery		Commissariat de Police Police station
	Entrée / Sortie parking Entrance / Exit car park		Maison communale Town Hall
	Parking public Public car park		Points de vente STIB Sales points STIB

Cartographie
STIB DOT
Cartography
MVB DNA

Realisé avec
Stravaux URSI/EG
Distribution & Copyright: CIB

Realisé avec
Stravaux URSI/EG
Distribution & Copyright: CIB

n° 117a
Edition / Edition
2011/02
Réseau / Network
14.03.2011

