



International Federation of Social Workers

Newsletter 2/98



What is Social Work?

A relevant question to the profession and IFSW

President's Message

In a few weeks our World Congress on Social Work and Social Work Education will be held in Jerusalem. The theme chosen is Peace and Social Justice. The theme is very relevant, still. Sadly relevant in many aspects.

Peace

More than fifty years after the end of World War II, conflicts and wars are abundant in almost all parts of the world. Some conflicts are lengthy and old, others have just started. The nuclear threat has recently tragically enough shown its ugly face again. Division, intolerance, and xenophobia are the root causes of many these conflicts. Fanaticism fuels the conflicts.

IFSW and the social work profession has always supported and striven for peace, disarmament and conflict resolution on micro, meso and macro levels.

There is still a long way to go for Peace.

Poverty

After 100 years or more of combating poverty and social injustice through social development work and professional social work, more than one-fifth of the world's population, over 1.1 billion people in the world, live in extreme poverty. Poverty is a gender issue because the majority of the world's poor are women, or children. It is thus also a childcare issue. Poverty is a major contributor to mental illness, stress, suicide, family disintegration and substance misuse.

Despite fine words and policy commitments from the World Summit on Social Development, the gap between the rich and the poor continues to grow. Heads of states and other leaders of the world's governments committed themselves in a declaration and a plan of action to create the necessary conditions to eradicate poverty, to develop sustainable employment and to stop social exclusion. Three years later we can see that they have forgotten. In reality, what we see is the contrary in many aspects. Poverty is growing, unemployment is increasing and staying at high levels in many countries; social exclusion is rapidly spreading in most parts of the world.

Instead of commitment we see - what is in many countries called neo-liberal (neo-conservative) policies - the attacks on the welfare systems, often backed up by demands of that kind from the World Bank and the IMF. We see changes

for the worse, reforms and cuts in social services that are creating more poverty and exclusion, which in itself directly and indirectly is resulting in deteriorating health and mental health for a growing number of people.

This demands of the social work profession to address, in all its branches or fields of action, these policies and processes and challenge the values that are creating exclusion and suffering. In doing this we, as social workers throughout the world, must cooperate and support each other and share experiences and methods. IFSW has started a work to formulate a basis for this important task.

Still, there is yet a long way to go for Social Justice.

Definition of Social Work

Our profession has come a long way since the first steps of organised charity, case work and settlement actions. The social work profession has over time broken new ground around the world in diverse ways. Where we are now, is the focus of an important work being carried out in IFSW on the Definition of Social Work. How can we describe and understand the profession today? What are its elements and aims today? What unites and what divides our profession? What are the links and the differences between continents?

After 100 years or more of professional social work we still have to ask the question: What is social work? The question is relevant to the profession and the federation. Perhaps because social work is not static, but reflects the changes in society and the changing needs of people. Perhaps because Social Work is change, it always changes and the question must always be asked and an answer found for each time and situation. An answer that encompasses both the changes needed as well as the constant, basic values of the profession.

And social work has most of the time through its history remained true to its root values. Social justice, human rights and participatory development or empowerment have always been the core of social work ideals.

Stockholm, June 1998

*Elis Envall
President*

In this issue

IFSW activities 1996-1998	3
Social Work Heroes	6
World Congress in Jerusalem	7
Regulation of Social Work in the UK	7
Conference information	8

IFSW Newsletter

is open for advertisements, including inserts
Deadline is **September 20, 1998**
for the October edition

For more information, please contact the Secretariat

IFSW activities 1996 – 1998

Membership

IFSW is as an organisation mainly based on membership dues income. The financial situation can be characterised as stable and healthy, but limited.

At the General Meeting in Hong Kong 1996, 59 national associations were in IFSW membership with a total of 435 000 individual members. Since then, four new member associations have been included: The Organisation of Social Workers in Bulgaria and the Bulgarian Association of Social Workers; The Union of Social Workers' Associations in Macedonia; and the Japanese Association of Certified Social Workers.

The social worker associations in Kenya and Niger will be proposed reinstated at the General Meeting, and applications from the Association of Social Workers in the Faroe Islands and the Japanese Association for Medical Social Work will be presented for approval.

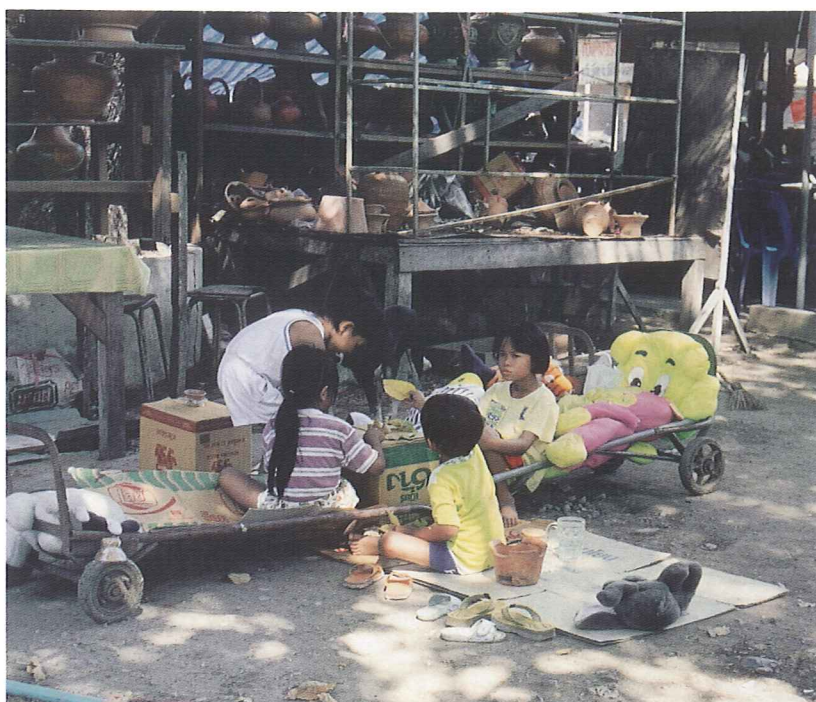
Representation

One of the main tasks of IFSW has for many years been to represent the profession towards international, intergovernmental organisations. One of the main activities of the IFSW UN Geneva Team is to link with the Human Rights Commission, which includes questions concerning the Convention on the Rights of the Child.

Implementation has been a key word in UN processes in New York during the two year period, the Commission on the Status of Women, the Committee on the Elimination of Discrimination against Women and the Commission on Social Development all put their energy into looking for solutions.

1999 is designated as the International Year of Older Persons and IFSW is actively taking part in preparations.

Ellen Mouravieff-Apostol ended her very successful term as President of the NGO Committee on UNICEF in June 1997. This position in itself and



even more the way it was handled enhanced IFSW's position in the international NGO community.

Social work definition

The General Meeting in 1996 set up a task force to elaborate a revised definition of the social work profession and minimum standards for the training.

The charge to the Task Force is to draft a contemporary definition of social work which will have global applicability in the 21st century.

The idea to draft a sequel to the 1992 UN training manual "Human Rights and Social Work" started in 1996.

The manual will attempt to help social workers and allied professionals to increase their theoretical knowledge in the field of children's rights and provide guidance to apply the knowledge in social work.

As a follow-up to the World Congress against Commercial Sexual Exploitation of Children in Stockholm 1996 IFSW in cooperation with International Catholic Child Bureau has taken on to carry out a project named *Lives at the Crossroads* to produce a manual for professionals on effective psycho-social strategies to

address sexual exploitation.

The aims of the project are to train social workers and other professionals in techniques and approaches that enhance prevention and psychosocial recovery of victims of sexual exploitation.

The General Meeting in Hong Kong decided to establish a working group to identify and record the damaging consequences for vulnerable people and for social work practice of structural adjustment and neo-liberal policies. The working group has not been able to commence its work due to lack of communication and time constraints in favour of other pressing activities. During the upcoming meetings in Jerusalem efforts to restart the process will be made.

Zimbabwe

IFSW has since 1997 been involved in an organisational development and educational project in Zimbabwe, in close cooperation with the National Association of Social Workers, Zimbabwe, and with financial support from Denmark.

The project, which so far is set to last until the end of 1999, consists of training courses for leaders and members of NASW-Z in a whole range



"Introducing IFSW at the Web has increased the number of requests significantly during the last year"

of association activities. An important aim is to expand membership.

The Christian Children's Fund is IFSW's partner in a social work training project in Belarus and Ukraine, conducting a series of workshops in the two countries. Trainers from several North American and Western European countries have contributed.

The leadership of the three sister organisations (IFSW/IASSW/ICSW) have during the period continued their usual cooperation, meeting on several occasions to discuss matters of common interest. One of the central issues for cooperation with the two sister organisations in the past years has been the preparation for the joint conferences in 1998 in Jerusalem.

Publications

The IFSW Newsletter is printed in increasing numbers. In addition to being sent to member associations, executives and representatives, the

Newsletter is distributed to IFSW Friends, other NGOs, inter-governmental organisations and also included as part of the introductory information material being mailed to the many social workers and others who every week request information about IFSW.

IFSW Update as the internal news medium is distributed in more than 200 copies.

Since the General Meeting in Hong

Kong, IFSW has established its Home page on the Internet. At this time the homepage contains general information, IFSW Newsletter and Update, the Ethical document, the IFSW global directory, conference information and introduction to the Friends program. A Human Rights section with actual cases and the Policy Paper on Human Rights will be introduced soon. Links to other home pages are included, and the aim is to expand this part.

Introducing IFSW at the Web and offering E-mail access has increased the number of requests significantly during the last year. A survey made this year shows that the Secretariat is receiving 6 000 requests per year.

European newsletter

The European newsletter *Euro Socialworker* is published three times a year. Project reports, a faxed news bulletin and the use of the IFSW Web site complete the picture of the communication initiatives undertaken in the European region.

International Social Work Journal is the official and scholarly journal of IFSW in cooperation with IASSW and ICSW. The journal is in very good hands, both in editorial and publishing terms, and the main challenge is to make ISW known to social workers globally.

The Human Rights Commission has participated in the production of the Manual for Schools of Social Work and the Social Work Profession on Human Rights and Social Work published by the UN Centre for Human Rights in 1992.

The document continues to be a human rights' best seller with translation

HUMAN RIGHTS AND SOCIAL WORK ON VIDEO

The traditional IFSW Social Work day at the United Nations in New York this year concentrated on "Human Rights: A Challenge for Social Work Practice". You can experience the complete day featuring four outstanding speakers (Susan Markham, Jane Connors, H.E. Sra. Julia Tavares de Alvarez and Janice Wood Wetzel) on video which is available from

Ms. G. Winifred Kagwa, 150 West End Avenue, Apt. 25 L, New York, NY 10023, USA.

The cost is US\$ 15.00 including mailing worldwide. Please indicate that you want the video and make cheques out to International Federation of Social Workers/UN

into several languages. The last two year period has seen four releases of detainees on whose behalf IFSW had been campaigning, three of them in Israel.

Since the General Meeting in Hong Kong the work of the Permanent Committee on Ethical Issues has developed a questionnaire which is designed to obtain from member associations a report of their work in the field of ethics and their feedback regarding the IFSW Ethical Instrument. The Committee has planned the first Consultation Day for members of IFSW on the subject of Ethics, which will take place in Jerusalem on June 30, 1998.

Policy papers

IFSW has published 13 International Policy Papers on a range of topics related to social work. Many of the present papers are somewhat outdated and under review.

IFSW has since the General Meeting 1996 arranged three major conferences, in Hong Kong 1996, in Dublin and in Bangkok 1997. All three were

"During the 1990's IFSW has increasingly been engaged in project development"

arranged in cooperation with the International Association of Schools of Social Work or its regional affiliates. In total, almost 1900 participants gathered for these events.

At an international, regional level the Social Work Action Day on November 12, 1997 was celebrated throughout Europe. The work around the project on Social Exclusion and Social Work formed the platform. There is a long tradition of celebrating a Social Work Day at the UN. The 14th Annual Day in 1997 concentrated on the "The Plights of the World's Children: Overcoming Poverty and Exploitation". (A video is available. Please see separate advertisement.)

The Friends of IFSW program was established in 1991 to offer individuals a link with IFSW, make the work of IFSW known to a broader audience, and raise non-dues revenue. Since 1996, the number of registered Friends

has grown from 483 to 691, with affiliates in 57 countries.

Development

Historically, IFSW was mostly an organisation intended as a tool for organising international social work conferences as a way of facilitating experience exchanges across borders. During the 1990's, IFSW has increasingly been engaged in project development, partly to assist in strengthening social worker associations, partly in specific areas of interest to professional social work.

The Executive Committee had a lengthy discussion at its meeting in 1997 on how we can develop IFSW to be in a position to deal with these tasks and expand to new areas. The Executive decided to establish a number of sub-committees with specific tasks to advance the operations of IFSW.

**Reduced Rates
for IFSW Friends**

International Social Work

An Official Journal of IFSW, IASSW & ICSW

Communicating Knowledge Across the Spectrum

International Social Work is a scholarly refereed journal designed to extend knowledge and promote communication in the fields of social development, social welfare and human services. Its major focus is on international themes in the delivery of services, the functions of social work professionals and the education of social workers. Social policy and social service provision provide the context for this focus.

Comparative Focus

The journal places particular emphasis on articles concerned with comparative analysis and cross-national research. In each issue you will find discussions and analyses of trends and issues in social welfare policy and social work practice, with a scope extending far beyond any single country. *International Social Work* will also provide you with timely thematic issues dedicated to specific international developments both in the developing and developed world.

Credit Card Subscriptions +44 (0)171 330 1266



SAGE Publications

6 Bonhill Street, London, EC2A 4PU, UK

Tel: +44 (0)171 374 0645 / Fax: +44 (0)171 374 8741

Email: subscription@sagepub.co.uk

US orders to: SAGE Publications, PO Box 5096, Thousand Oaks, CA 91359, USA

Social Work Heroes

Centennial celebration

The National Association of Social Workers, Council on Social Work Education, and other organizations continue to celebrate the centennial of professional social work in the United States.

Each month the NASW Web Site Centennial Calendar expands to include new events and activities scheduled across the nation, (www.socialworkers.org).

A common goal of all events is to bring positive attention to professional social workers. Active national and local media campaigns highlight historical social work leaders such as Jane Addams, Whitney M. Young and Jeannette Rankin and the impact of their actions on addressing needs of the poor and disenfranchised.

Letters to the editor, special articles, and public service announcements also features contemporary professional social workers who commit their lives to individuals, to families, to communities, for the betterment of the collective whole.

- In these 100 years, social work has impacted our nation's psyche, its health, its moral fiber, and worked to implant the concept of society's moral responsibility for the well-being of all, states Josephine Nieves, NASW Executive Director.

Jane Addams is universally recognized for clearly demonstrating the ethics and values that became the basis of the 100-year-old social work profession. She was called a "reformer (who) fought for the many causes of the forgotten" when recognized by Life magazine as one of the 100 Most Important Americans of the 20th Century.

The American Settlement House Movement gained momentum when in 1889 Jane Addams and Ellen Gates Starr opened the doors to Hull-House on Chicago's West Side.

The settlement house work begun in 1889 continues today in 1998. Nine hundred neighborhood centers provide a wide range of services to people in American neighborhoods from coast to coast.

At the end of last century, Jane Addams and other early social work leaders addressed issues related to industrialization. Today we struggle with issues related to globalization.

The world is now a community as intimate and intertwined as Chicago's East Side.

The porches of yesterday are becoming today's world wide web chat groups.

*Cheryl K. Simpson-Whitaker, MSW
NASW Centennial Coordinator*



1 9 9 8 THE LILLY SCHIZOPHRENIA REINTEGRATION AWARDS

For further information please contact:

Awards Secretariat,
Schizophrenia Reintegration Awards,
Third Floor,
Communications Building,
48 Leicester Square,
London, WC2H 7LJ, UK
Telephone: +44 171 331 5300
Facsimile: +44 171 331 9083

The Lilly Schizophrenia Reintegration Awards are designed to recognize and reward outstanding achievement by care givers in helping patients with schizophrenia reintegrate back into society.

Schizophrenia is a frightening disease; it instills fear and dread in the minds of most people.

The disease is equally frightening for the sufferers – it can affect anyone, particularly younger people. With the development of newer treatment options the symptoms of schizophrenia can be controlled, offering the chance for people who suffer to live more normal lives again.

The Awards Scheme is conducted in three regions: Eastern Mediterranean, Latin America and Europe. Entries are invited in the following categories:

- Professional/Public
(including clinical medicine, nursing, social work and community action)
- Journalism
(including print and broadcast)

The winners selected from each category in each region will be invited to one of this year's WPA meetings.

- Eastern Mediterranean – Kaslik, Lebanon
(14th - 17th April 1998)
- Europe – Geneva, Switzerland
(7th - 10th October 1998)
- Latin America – Guadalajara, Mexico
(28th - 30th October 1998)

Award winners will receive a certificate of excellence, a commemorative trophy and an educational grant to include travel, hotel and congress registration expenses for one person to attend the relevant WPA regional meeting to accept their award. Winners of the Clinical Medicine and Community Action category will also be awarded a donation to a charity or not-for-profit institution of the winner's choice.



Peace and Social Justice World Congress in Jerusalem

As we present this article, we are a few short weeks before the General Meeting and Joint World Congress in Jerusalem. The program committee has put together an outstanding program with "something for everyone". The plenary lectures include a wide range of subjects including Prof. Jonah Rosenfeld, the first social worker to be awarded the prestigious Israel prize for his contribution to the theory and practice of social work; Prof. Barbara Solomon of the University of Southern California and Prof. Harris Chaiklin.

The sixteen parallel plenary sessions will deal with the main themes of the congress, and with issues central to social work practice and education, among them: Multiculturalism in Social Work Practice and Education; Neo-Liberalism and the Attack on the Welfare State; Social Justice in Work Organizations.

Over 300 papers will be presented and discussed in paper sessions and round-table discussions. Among the topics of these sessions we find: The Emergence of Social Work Practice and Education in Eastern Europe; Long Term

Consequence of Child Placement; Working with Children of Substance Abusers.

Other sessions will be devoted to developments in different fields of practice, such as school social work, aging, migration. Workshops and poster sessions depicting practice innovations, research findings and special projects will provide an opportunity for small group and one-on-one contact and discussion. There will, also be continuous screening of films as well as theater performances relevant to the congress theme.

Prior to the opening of the congress there will be an all day symposium on community work and one on women's issues. Finally, 25 field visits have been planned. Some will visit services in specialized areas, such as child protection, services to the aged, urban community development and health care facilities. Others will provide visitors an opportunity to become acquainted with special communities such as a kibbutz, an

Arab village, an integrated Jewish-Arab community.

It is obvious that the program and organizing committees have been working tirelessly to make this World Congress an event to remember. July days in Jerusalem are sunny and warm while the nights are cool. Don't bother bringing an umbrella - it won't rain. After the Congress, there is much to see and do in Israel. You can explore the historical sights of Jerusalem, visit the more modern Tel Aviv or explore the coral in the Red Sea at Eilat.

We call on all social workers to come to Jerusalem and make the 15th IFSW World Congress a resounding success while participating in an outstanding professional experience. Your presence in Jerusalem will serve to strengthen the Israel Association of Social Workers and its members who support and work towards Peace and Social Justice on a daily basis.

*The Israel Association
of Social Workers*

Regulation of Social Work in the UK

The British Association of Social Workers has been arguing for the regulation of social work for more than 25 years. Unlike our colleagues in Europe, there has never been any control over who can or cannot practice nor any rules regarding the levels of qualification required.

The Government has now announced that there will be a new Regulatory Body for social work, "General Social Care Council". Or to put it more accurately, that there will be four Councils, one each for the four countries - England, Wales, Scotland and Northern Ireland.

The Government intends to introduce legislation that will require the new Council to produce codes of conduct and standards of practice to be written

into the contracts of employment and service contracts. Staff, managers, employers and providers of services will be obliged legally to adhere to these codes of conduct.

We know and agree with the Government that they wish to see protection of the public as a primary purpose of the regulatory council. Seeking active safeguards and better standards for service users has our full support.

This could provide a solid floor of national minimum standards which will enable staff, users of services and the public to know what is expected and to recognise when conduct or practice is

seriously deficient. This will also help to ensure an integrated approach to standards of practice in order to avoid giving staff conflicting messages from employers and regulatory bodies.

As far as individual registration is concerned the Government proposes to initially register all qualified social workers.

BASW will be actively contributing to the development of the Council, offering models of codes of conduct and standards of practice to ensure that the final shape and structure of the Council achieves everything we have so patiently argued for over many years.

*Dave Burchell
British Association of Social Workers*

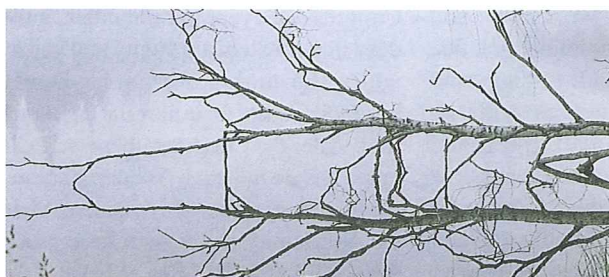
Social Work Conferences 1998 - 2000

Three scheduled regional and global conferences arranged by IFSW and partnership organizations in the years to come. We also include information on five other conferences.

Jerusalem, Israel, July 5-10, 1998

World Congress: **Peace and Social Justice - The Challenges Facing Social Work**

Kenes, P O Box 50006, Tel Aviv 61500, Israel
Tel (972) 3 514 0000, Fax (972) 3 514 0077
E-mail: ifsw@kenes.com



Helsinki, Finland/St. Petersburg, Russia,

June 13-17, 1999, A joint Finnish/ Russian venture
European Seminar: **Work, Economy and Welfare - Professional Social Work Promoting Human Society for All**
The Finnish Union of Professional Social Workers,
Rautatieäisenkatu 6, FIN-00520 Helsinki, Finland
Tel (358) 9 15021, Fax (358) 9 877 0270
E-mail: upsw@sostl.fi

Montréal, Canada, July 29 - August 2, 2000

World Conference: **Promoting Equitable Societies in the Global Economy: Social Work in the 21st Century**
Canadian Association of Social Workers, 383 Parkdale Avenue, Suite 402, Ottawa, Ontario K1Y 4R4, Canada
Tel (1) 613 729 6668, Fax (1) 613 729 9608
E-Mail: casw@casw-acts.ca



Building Networks – European Foster Care Conference 1998

August 21 - 23, 1998, Nyíregyháza, Hungary

Conference Secretariat: European IFCO Conf. 1998, Plantage Parklaan 12, NL-1018 ST Amsterdam, Holland
Tel (31) 20 626 9007, Fax (31) 20 626 9534, E-Mail: conference@ifco98.org

Protecting Children - Innovation and Inspiration

September 6-9, 1998, Auckland, New Zealand

Congress Secretariat, P.O.Box 90-040, Auckland, New Zealand
Tel(64)9 360 1240, Fax (64) 9 360 1242, E-mail: info@tcc.co.nz, Web: <http://www.nzhealth.co.nz.ispcan98>

Social Work - Making a Difference

March 22-25, 1999, Southport, England

Information: Lyn Nock, British Association of Social Workers, 16 Kent Street, Birmingham B5 6 RD, United Kingdom,
Tel (44) 121 622 3911, fax (44) 121 622 4860, E-mail: 106335.2656@compuserve.com

Peace in Every Classroom

April 21-24, 1999, Rosemont (Chicago), Illinois, USA

Information: School Social Work Association of America, P.O.Box 2072, Northlake, IL 60164, USA
Tel: (1) 847 289 46 42, E-mail: SSWAA@aol.com

School of Social Work Theory and Practice

May 31-June 25, 1999, Dubrovnik, Croatia

Information: Dr Dada M Maglajlic, Social Work Program, Bemidji State University,
1500 Birchmont Dr, NE, Bemidji, MN 56601, USA
Tel: (1) 218 755 2837, Fax (1) 218 755 2822, E-mail: maglajlicdam@vaxl.bemidji.msus.edu

IFSW-Newsletter is published by International Federation of Social Workers
Box 4649, Sofienberg, N-0506 OSLO, NORWAY
Tel (47) 23 06 11 52, Fax (47) 23 06 11 14
E-mail: secr.gen@ifsw.org Web: <http://www.ifsw.org>