



IFSW

EUROPE'S NEWSLETTER

EUROPEAN SOCIAL WORKER #1 | 11-2013



INTERNATIONAL FEDERATION OF SOCIAL WORKERS
FÉDÉRATION INTERNATIONALE DES ASSISTANTS SOCIAUX
FEDERACIÓN INTERNACIONAL DE TRABAJADORES SOCIALES

1.

PRESIDENT'S ADDRESS

Photo executive by Ana Belén- General Council of Social Work Spain

Design by Maria Mónica



DEAR COLLEAGUES, GREETINGS TO ALL SOCIAL WORKERS!

It has been a long time since our last European Social Worker...

However we are now very pleased to present you IFSW Europe's latest edition of our newsletter in a new format and introduce you to our professional designer, Maria Mónica, who is now working on the communication area together with me.

2013 has been a very busy and challenging year for the European Executive as a consequence of a number of internal changes and a backcloth of increasing workloads and diminishing resources in our daytime activities as Social Workers.

In Istanbul, in April 2013 at the Delegates Meeting, Siobhan Maclean departed from the position of Honorary Secretary after 6 years working for IFSW Europe.

Prior to Siobhan's departure applications for a new Honorary Secretary, were invited and Ana Martín, was appointed. However, regrettably following a handover period and 4 months of preparation Ana concluded the position was not right for her and decided to resign.

The executive is still evaluating this situation but having regard to the urgent need to progress work in the communication area in the meantime we have secured the services of a professional designer.

Since April 2013 the executive committee has been actively working on the actions contained in the work plan approved by the Delegates Meeting in Istanbul, mostly focusing on those items defined as priorities for the moment.

In Istanbul, after the Delegates Meeting, the executive met with the deputies for the first time in its history and they have been joining us in our web meetings as we are planning to involve them more in the future work of the federation.

Social Action in Europe, the title of the Enact Conference in Istanbul, surely defines what we have been seeing in Europe. I am sure that many of you will agree with me that looking back over the past year the activities of social workers have been much more visible and we have not been silent. On the contrary, we have been more and more prominent in local campaigns and demonstrations. It has been impressive to see how across Europe social workers are standing up for Human Rights and taking to the streets in demonstrations. IFSW Europe has been publicizing and supporting all these actions.

Here are some examples.





DECLARATION BY TURKISH ASSOCIATION OF SOCIAL WORKERS (TASW)

The right to participation to decision making process in metropolitan areas did not take account by Istanbul Greater Municipality regarding the Project implementing in Taksim Square / Istanbul. Anti-democratic strategies become dominant. There was no room to listen and understand the views of local people of Istanbul. In this process, people decided to use their constitutional / demo-

cratic rights by organizing democratic, peaceful gatherings in order to make their voices heard.

As social workers, we criticize all illegal practices including police brutality towards people who protest the demolition last green area called "Gezi Parkı" and consider these a clear violation of human rights.

As a practitioner of social work profession, a human rights profession, we support the efforts of our citizens in order to protect environment. Based our professional knowledge and ethical principles we support to people who advo-

cates their environmental rights. We inform that social workers are ready to provide psycho-social support to our citizens who involve protests. A group of social workers from Istanbul Branch of TASW will be with them in Taksim Square during protests.

We declare our worries as violence become a dominant element in this process. Local authorities should provide health services to people who involve protests.

With our regards
TASW Headquarters-Ankara.
31.05.2013

MALTA SILENT DEMONSTRATION AGAINST VIOLENCE ON SOCIAL WORKERS (AND OTHER HELPING PROFESSIONALS)



Following recent alleged violent aggression on two social workers of the Richmond Foundation, the Maltese Association of Social Workers (MASW) organized a silent demonstration in order to show solidarity towards its fellow colleagues whilst simultaneously raising awareness that violence towards social workers and other helping professionals is not tolerated.

For this purpose the MASW held a demonstration near Café Cordina, in Republic Street, on Monday 3rd June 2013 at 17:30.

The Minister for the Family and Social Solidarity (Hon. Dr. Marie Louise Coleiro Preca) and the

Shadow Minister for the Family and Social Solidarity (Hon. Dr. Chris Said) were informed of the activity and were present to listen to social workers concerns.

A number of Social Work professionals participated in this demonstration, especially since this was a crucial point for social workers and other helping professionals.

The MASW submitted also a formal report along with its recommendations to the Minister and Shadow Minister for the Family and Social Solidarity.

20.06.2013 GEORGIAN ASSOCIATION OF SOCIAL WORKERS' PROTEST AGAINST PARLIAMENT'S HANDLING OF ANTI LGBT VIOLENCE

Georgian Association of Social Workers joined the protest against parliament's handling of anti LGBT violence in front of Radisson Blue Iveria Hotel in Tbilisi on June 20th at 10:00 AM. The protest was held while parliament's human rights committee was holding a meeting inside.

A few days ago, the committee presented a draft statement about the events of May 17, when radical clerics and activists dispersed a peaceful gay rights rally. Following these events Georgian citizens appealed to the parliament's human rights committee with a joint petition with the demand to

investigate the acts of violence and abuse of rights of demonstrators.

Social workers joined the gathering to protest against the content of the statement and the fact that committee members have tried to cast doubt on the authenticity of the signatures of a petition that 12 000 people have signed, asking the speaker of parliament for a proper reaction to the violence on May 17.

According to social workers charter of rights and code of ethics, social workers have a professional responsibility to raise their voice and engage in civil action to stand up against human rights violations and social injustice.

SPAIN - SOCIAL WORK IN EMERGENCIES

After the recent tragic train accident in Santiago, Spain, many Social Workers across the country have contacted the General Council of Social Work in Spain offering to work as volunteers with the local emergency groups. Ana Isabel Lima, president of the Spanish Association of Social Workers felt even more proud to be a social worker and thanked all colleagues from Spain for their solidarity with the families' victims and for the great intervention colleagues from Galicia have managed to provide locally. Social Workers have been in the front line supporting families in grief during these days.



ALTER SUMMIT IN ATHENS, GREECE

www.youtube.com/watch?v=y5KY2PLfYaw



Παρασκευή 7 Ιουνίου, 9 μ.μ.

ΣΥΝΑΥΛΙΑ αλληλεγγύης των λαών

- Antena (Κροατία) • Revolutionary Choir (Πορτογαλία)
- Diether Dehm & Michael Letz (Γερμανία) • Penny and the Swingin' Cats
- Champagne & Revolver (Cast A Blast) • Balduša
- Superherank! & the Swinging Shoes • What the Fuck (Ελλάδα)

Σάββατο 8 Ιουνίου, 7 μ.μ. - Μουσείο
ΔΙΑΔΗΛΩΣΗ ενάντια στη λιτότητα
και το φασισμό

The General Council of Social Work Spain participated at the celebration of Alter Summit in Athens, Greece on 7 and 8 June 2013 and recorded this important video with messages of support to the Orange Tide, against social cuts and austerity measures.

The General Council of Social Work used its participation in the event to hand out orange shirts, to explain the Orange Tide movement and advance on most recent campaign of Up Here.



I HOPE YOU ENJOY READING THIS NEWSLETTER.

Best wishes to All,

Cristina Martins, Regional President, IFSW Europe e.V.

2. REPORTING ON ACTIONS: MAKING A LINK WITH THE EXECUTIVE MEMBERS WORK PORTFOLIO

This newsletter is developed on the basis of our key document "Executive Members Work Portfolio", recently revised and arranged by our professional designer so you will see that ESW's items are organised and appear in the coloured part that denotes the executive member responsible for this particular area of work.

IFSW Europe e.V. | EXECUTIVE MEMBERS WORK PORTFOLIO

IFSW Europe e.V., 20th September 2013



CRISTINA MARTINS

martinscristina25@hotmail.com

IFSW Regional
President for Europe

Communication and
European Social
Platform, Comms

Ensact

**GABRIELE
STARK- ANGERMEIER**

stark-angermeier@dbsh.de

Honorary Treasurer
IFSW Europe e.V.

Legal Body
Maintenance

Representative for the
Council of Europe

MARIA MORITZ

maria.moritz@chello.at

IFSW Regional Member
at Large for Europe

Global Agenda for
Social Work and Social
Development

World Conference on
Social Work and Social
Development
Melbourne 2014-
Programme Committee

Fundamental Rights
Agency (FRA) and
Fundamental Rights
Platform (FRP)

Professional
Qualifications Directive

HAKAN ACAR

bulahakan@gmail.com

Project: Economic
Crisis in Europe-
Challenge and
Response of Social
Work Profession

World Social Work Day
2014

IFSW European Confer-
ence 2015

IAN JOHSTON

i.johnston@talk21.com

EU Issues and Coordi-
nation of IFSW Europe
input to the European
Social Platform

European Anti-Poverty
Network (EAPN)

ICT Development
Project with European
Federation of Nurses
(EFN)

Timebank

**SALOME
NAMICHEISHVILI**

salome.n@gasw.org

The Social Work Role
and Identity Project

The Development of
Social Work in New
Social Work Countries

The Review of Mem-
bership in IFSW

Representative to the
Global Ethics
Committee

COMMUNICATION

Cristina Martins, IFSW Regional President for Europe is now the official contact person for the European region and will keep

emailing members with general information, asking members to send any feedback to the contact person of the executive responsi-

ble for the specific area according to the email subject.

Please email to:
martinscristina25@hotmail.com



MARIA MÓNICA

www.mariamonica.com

IFSW Europe has secured services of a professional designer, Maria Mónica, who will be working with Cristina on the area of communication. One of her responsibilities is to organize graphically all key documents and produce new standard material for IFSW Europe.

Maria Mónica is a Portuguese professional designer and musician who lives in Porto and works at Casa da Música, one of the best known music and arts institutions in Portugal.

In March 2013 Maria assisted us with the production of the video message for IFSW Europe for the occasion of World Social Work Day.

TRAINING

Graduated in Communication Design, Graphic Arts by the **School of Fine Arts, University of Oporto**, Portugal.

Through Project Socrates-Erasmus, studied at the **Department of Design at the University of Salford, Manchester**, UK,

in the 5th year of the course, from 2000 to 2001.

In 2011 attended to an intensive two month course of Karawitan (Gamelan theory and practice) at **ISI – School of Fine and Cultural Arts of Java**, Indonesia.

Continues to do various courses and training in distinct areas such as Music, Printmaking, Cultural Animation or even Computer Programming.

Worked as Graphic Designer and Creative Design in offices as **Oxido** and **Atelier Nunes e Pã**.

Worked at *Petit Patapon* as Graphic Designer and Creative. Even in this company: integrated global marketing team; determined to create the graphics department at Barcelos, Portugal; was responsible for creating all brand graphical materials nationally and internationally: Catalogs Collection, Illustrations for several materials, store openings materials, brochures, etc.; developed the image of the Campaigns of the trademark and all graphical materials involved; made up of the Production Process of the materials - Examinations, Process Printing, Graphics, Development of Brand Image - Advertising in all markets; created stands fairs for

international presentation of the brand.

CURRENTLY

Is 'freelancer' (through various artwork, illustration, image editing, design and regular collaborations with film producers) and develops its own projects for video, animation, illustration, music, among others.

Collaborates with the Education Department of **Casa da Música** at the creation, development and educative animation of interactive workshops and other activities such as Gamelan workshops. Works with communities with special needs. Belongs to the creative team from the same institution Factor E (creation, development and promotion of workshops and performances of the Education Service). Also, makes video / visual work for the Department of Educational Services.

Works as music tutor for children from twelve months to six years old in several pre-schools and vocational schools.

Belongs, as bass player, and coordinates **OGBE**, an orchestra of 12 electric guitars, 7 basses and 2 drum kits.



COMMS SOCIAL PLATFORM

Cristina Martins is the official contact person for the Comms (communication group) of the European Social Platform (SP). Ariela de Gennaro recently left her job at the SP and is now working for the European Parliament. We have formally recorded our appreciation of the significant contribu-

tion she has made to the Platform's activities and wished her every success in the future. Alison Coleman has been taking some of the communication work for the moment.

DELEGATES MEETING 2013 SOCIALIZING SESSION



The Delegates Meeting of IFSW Europe was held this year in Istanbul, Turkey, from 14 to 16 April 2013. Delegates from 21 countries were present: Armenia, Austria, Azerbaijan, Denmark, Croatia, Finland, France, Germany, Georgia, Ireland, Lithuania, Macedonia, Malta, Norway, Portugal, Russia, Spain, Sweden, Switzerland, Turkey and the United Kingdom.

The European President Cristina Martins welcomed delegates to the Delegates Meeting and gave a particular welcome to Azerbaijan who were represented for the first time at a Delegates Meeting. Hakan Acar welcomed the Delegates on behalf of the Turkish Association of Social Workers.

Gonca Polat gave a short presentation about social work in Turkey. Social services have a deep rooted past in the history of Turkey. Turkey is currently in a period of rapid social and economic development and there have been many changes to the structure of

social services in recent years. The UN supported the development of social work education. Until 2003 there was only one school of social work in Turkey, but the number of schools of social work is increasing and there are currently 21 active Universities providing social work education. The Turkish Association of Social Workers has 2,500 members in 19 branches. There are plans to establish a Council for Schools of Social Work in Turkey, but these are not yet finalised.

The IFSW work programme was presented. Cristina explained that the executive have developed a new way of presenting the programme using three key themes:

- > Visibility and voice
- > Membership development
- > Services for members

Cristina pointed out that each executive member has a specific area of work. Each executive member then gave a presentation on their area of work.

The Report on the work

programme was adopted and approved by the Meeting. Also formally approved were the annual accounts and the report of the auditors, the Ratification of the general and financial policies of IFSW Europe e.V. and the Work Programme for 2013-2014.

REPORT FROM THE IFSW SECRETARY GENERAL DR RORY TRUPELL

Rory said this is a new era for IFSW and that it is very important that at this time the unique contribution of social work is recognised. It is vital that when we are engaging with partners to address specific issues the unique perspective of social work is heard.

The Global agenda seeks to present IFSW's overarching activities under one banner. It is important that people do not feel they are being asked to do more work, but that they engage with the agenda. The regional observatories will be important in gathering regional information, stories and statistics about social work and



the struggles that people face. It is hoped that this will lead to more cohesion.

For the debate on the review of the **Global Definition of Social Work - developing a European position** Ian Johnston and Maria Moritz invited groups to discuss the proposed definition focusing on:

- > Does the proposed definition accurately describe the core elements of the work undertaken by the social work profession across Europe?
- > Is the proposed definition better than the present definition?
- > How might the proposed definition be improved?

Austria brought a motion as follows: "The discussion about a new international definition of social work needs to be postponed. Before resumption, an evaluation of the existing definition needs to be carried out covering the following areas: Implementation of the definition in national legislation of the

member countries. Implementation of the definition in the national training facilities for social work in all member countries. Changes in social work practice which are not in line with the existing definition of social work. The European executive committee shall advocate the demand for an evaluation in the global executive committee and prepare a corresponding motion for the Delegates Meeting in 2014 in Australia. Reason: The definition of social work is the key element for establishing the identity of an occupational group. A change in the definition should be initiated only after precise evaluation of the implementation process and the need for change."

The motion was approved by the Delegates Meeting.

ELECTIONS / NEW EXECUTIVE

Gabriele Stark-Angermeier and Hakan Acar were elected to the executive for two years. Salome Namitcheishvili and Ian Johnston were elected to the executive for one year. Mira Antonyan is first

deputy and Aytakin Huseynli second deputy.

REPRESENTATIVES

Gabriele Stark-Angermeier (Germany) was appointed as Representative of IFSW Europe to the Council of Europe.

Graça André (Portugal) was appointed as IFSW European contact person to the Global Human Rights Commission and Stephane Beuchat (Switzerland) and Gonca Polat appointed as deputies.

Salome Namitcheishvili (Georgia) was appointed IFSW European contact person to the Global expert group on ethics.

John Brennan (Ireland) was appointed to serve as IFSW Europe Election Officer.

The executive and all delegates thanked Siobhan Maclean for her contribution to IFSW's work in Europe as Honorary Secretary over the past 6 years and Siobhan thanked delegates for their support.



The Delegates Meeting recorded a big thanks to the hosts in Turkey. It was announced that the next Delegates Meeting will be in Madrid, Spain from 16th to 18th of May 2014.

The minutes of the 2013 Delegates Meeting are available to download on the website: ifsw.org/europe

The Session "Socializing in IFSW Europe" was held in Down Café in Istanbul. The café is run by young people with Down syndrome.

The main idea of the session was to socialise with each other during the coffee break in an informal setting and discuss the topics that really matter to delegates. The session was facilitated by Salome.

Cristina Martins welcomed delegates participating in this Session. The delegates were also welcomed by the owner of the Café who gave a short overview of the support offered to the young people participating in the project and highlighted the importance of integrating people with down syndrome in the society. Cristina Martins invited the three ex-presidents of IFSW Europe, Herbert Paulschin, David Jones, and Nicolai Paulsen to speak about their experience with IFSW Europe. She highlighted the importance of history for an organization that is making progress towards the future. Three of the ex-presidents spoke about

their experience. Salome Namicheishvili addressed the delegates highlighting the importance of such an informal meeting within the frames of IFSW Europe. She emphasized that, particularly for new members, it is of a great importance. She mentioned that in Georgia, also Armenia and Azerbaijan, where social work is just emerging, it is very tough for the social workers to establish social work practice as social work values often challenge existing cultural practices and social workers, who mainly are young women have to overcome a great deal of resistance. It is important for them to discuss these issues and share their stories with colleagues in Europe. These sentiments were echoed by the former presidents messages concerning the importance of welcoming new people in to the family of IFSW Europe. Salome asked participants if they wanted to share some thoughts with IFSW Europe. Aytakin Huseynli from Azerbaijan indicated that as it was her first delegates meeting many people were asking her about Azerbaijan during the breaks, so she therefore felt that it would be interesting to share some information with all the delegates about her country and social work in its early stage of development. The audience expressed the view that the informal socializing session had proved to be an important way to communicate with each other.



An unexpected encounter between 4 IFSW European Presidents and 3 Honorary Secretaries happened during the dinner offered by TASW for all delegates in Istanbul, April 2013:

Herbert Paulschin
Austria (1998-2002)

David Jones
UK (2002-2006)

Nicolai Paulsen
Denmark (2006-2012)

Cristina Martins
Portugal (July 2012)

Ana Radulescu
Romania (2002-2006)

Siobhan Maclean
UK (2007-2013)

Ana Martin Munoz
Spain (January - May 2013)

**ENSACT CONFERENCE
ISTANBUL 2013
IFSW EUROPE DAY- SYM-
POSIUM ON HUMAN
RIGHTS**



The Ensact Conference in Istanbul was a great success mostly due to the great work and commitment of our Turkish colleagues in making everything possible, catering for all participants and creating a wonderful atmosphere.

A special recognition goes to the great Ambassador of Turkey, Murat Altuggil. A warm thank also to all our other Turkish colleagues especially Hakan Acar.



IFSW Europe promotes human rights and social justice through meetings, symposiums and that has happened during this Conference with the IFSW Europe Symposium on "Human Rights-Theory and Practice for Social Workers. The Symposium offered an excellent opportunity to discuss the possibility of building a network in Human Rights in the European Region.

There were theoretical contributions about the framework and complaints mechanisms for human rights violations. Other contributions showed the several

realities in different countries practicing and projects in view of human rights realization.

I would like to highlight the experience from the Spanish Association of Social Workers defending the public and qualified system of social services in Spain. They showed in an impressive way, how the campaign "Orange Tide" is fighting for the social rights of all citizens.

IFSW Europe congratulates and thanks Graça André for organizing this symposium as well all participants for their great presentations.



ENSACT

In Istanbul the new president of Ensact was announced, Thea Meinema. A brief meeting with the presidents of all organizations occurred during the Istanbul Conference and later a meeting was agreed by the President for the 1st November 2013 in Utrecht, Netherlands. Despite the importance of maintaining strong links with our Ensact partners the Executive of IFSW Europe decided to concentrate on our other priorities and agreed that irrespective of the final accounts for Istanbul Ensact Conference 2013 the decision to hold our own event in 2015 had been made at the Delegates Meeting and will stand.

Our human and financial resources and actions planned for the coming period are not compatible with more activities for the moment like engaging with Ensact, so IFSW Europe didn't attend this meeting in Utrecht.

Cristina Martins
President of IFSW Europe e.V.

THE GLOBAL AGENDA - A JOINT EFFORT BY THE THREE GLOBAL ASSOCIATIONS: IFSW, IASSW AND ICSW

A call to all colleagues social workers in practice and education.

Five years ago working groups of the three organisations, IFSW, IASSW and ICSW embarked on a joint program which will last until 2016. In January 2012 the program was launched at the UN in New York and presented to the UN Department of Economic and Social Affairs.

The commitment of the organisations:

"As social workers, educators and social development practitioners, we witness the daily realities of personal, social and community challenges. We believe that now is our time to work together, at all levels, for change, for social justice, and for the universal implementation of human rights, building on the wealth of social initiatives and social movements. We, the International Federation of Social Workers (IFSW), the International Association of Schools of Social Work (IASSW), and the International Council on Social Welfare (ICSW), recognise that the past and present political, economic, cultural and social orders, shaped in specific contexts, have unequal consequences for global, national and local communities and have negative impacts on people.

Specifically, we recognise that:

> the full range of human rights are available to only a minority of the world's population;

> unjust and poorly regulated economic systems, driven by unaccountable market forces, together with non-compliance with international standards for labour conditions and a lack of corporate social responsibility, have damaged the health and wellbeing of peoples and communities, causing poverty and growing inequality¹;

> cultural diversity and the right to self-expression facilitate a more satisfactory intellectual, emotional, moral and spiritual existence², but these rights are in danger due to aspects of globalisation which standardise and marginalise peoples, with especially damaging consequences for indigenous and first nation peoples³;

> people live in communities and thrive in the context of supportive relationships, which are being eroded by dominant economic, political and social forces;

> people's health and wellbeing suffer as a result of inequalities and unsustainable environments related to climate change, pollutants, war, natural disasters and violence to which there are inadequate international responses."

Therefore the following statement was made:

"Consequently, we feel compelled to advocate for a new world order which makes a reality of respect for human rights and dignity and a different structure of human relationships.

We commit ourselves to supporting, influencing and enabling structures

and systems that positively address the root causes of oppression and inequality. We commit ourselves wholeheartedly and urgently to work together, with people who use services and with others who share our objectives and aspirations, to create a more socially-just and fair world that we will be proud to leave to future generations."

WHY WE ARE DOING IT NOW

All over the globe social workers are recognizing the changes people have to go through, people with whom they work every day, people they give support and guidance. Social work is related very closely to economic developments and changes in society. Neoliberalism, shortages of energy and resources, the increase of world population, climate change and the resulting catastrophes and tensions in their societies that lead to humanitarian emergencies, all this can be observed since many years. Social workers notice all this very closely. Especially in Europe it is very present and painful for millions.

Some may say there is hardly anything one can do about it and all have to live with this situation. What can be recognised is the behavioral challenge for people, the reactions of politics on this and people reacting on the political and financial measures. There is a very tight global network that influences peoples lives very local and in all regions.

SOCIAL WORK MAKES A DIFFERENCE

Social work wants to give an answer to these challenges, an answer that shows how it could be done differently, following the needs of people, providing basic needs through economic and political changes, changes of laws and rules in societal priorities.

Since there is the need for changes all over the globe the Agenda has a global sphere of activity. This means all over the globe examples and reports of activities of social workers are collected, work that shows the creativity and the spectrum of alternative, sustainable and humane solutions to the people's problems.

The international organisations work on the international and global level, the national associations on national level challenging their governments and shareholders, regional networks in their domain and each practitioner can provide examples from their work to complete the picture of how a more just and fair world can be established.

HOW CAN THESE AIMS BE REACHED?

We have to admit this is a very challenging program and follows high aspirations. How can these be met?

Social workers already follow high ethical principles and demanding guidelines in their daily work, guidelines that are based on human rights. This means social workers who want to contribute to the Global Agenda don't have to re-educate or revise their basic attitudes. What should be emphasized is the aspect of how social work makes a difference. What changes for people when a social worker meets people with dignity,

respect, tolerance, participation, acknowledgement and motivation? What kind of changes can be achieved in political initiatives if all these principles are taken into account on all levels and set into action? What kind of changes will there be in our societies if people are not discriminated against and excluded, if their potential is appreciated and promoted? What will be the difference for each individual person who is coping with a load of problems if they are supported, informed and taken seriously by neighbors, communities and administrative bodies?

The Global Agenda is being pursued on three important levels:

1 - Level of United nations and international organisations

"We will support the Millennium Development Goals. Our major focus is to prepare for the post-2015 development agenda¹, which includes, for example, the social protection floor initiative²; decent work and international labour standards³; the WHO initiative on the social determinants of health⁴; and education for all. We will strive with others for a people-focused global economy that is regulated to protect and promote social justice, human rights and sustainable development."

2 - Communities and other partners

"We will support and work in collaboration with others for the development of strong local communities that promote the sustainable social wellbeing of all their members. Our major focus is to strengthen the capacity of communities to interact with their governments to extend social and economic development."

3 - Our own organisations

We will work within our own organi-

sations to promote education and practice standards in social work and social development that enable workers to facilitate sustainable social development outcomes.

¹ UN General Assembly (2011) Accelerating Progress towards the Millennium Development Goals -Annual report of the Secretary General

² The term "social protection" is used to mean protection provided by social security systems in the case of social risks and needs. Social protection is often interpreted as having a broader character than social security (including, in particular, protection provided between members of the family or members of a local community).

www.social-protection.org

³ ILO (2008) Decent work agenda

'Decent work sums up the aspirations of people in their working lives. It involves opportunities for work that is productive and delivers a fair income, security in the workplace and social protection for families, better prospects for personal development and social integration, freedom for people to express their concerns, organise and participate in the decisions that affect their lives and equality of opportunity and treatment for all women and men.' (See ILO (2008) Declaration on Social Justice for a Fair Globalization above.)

⁴ World Health Organisation (WHO) (2008) Commission on Social Determinants of Health The social determinants of health are the conditions in which people are born, grow, live, work and age, including the health system. These circumstances are shaped by the distribution of money, power and resources at global, national and local levels, which are themselves influenced by policy choices. The social determinants of health are mostly responsible for health inequities - the unfair and avoidable differences in health status seen within and between countries.'

STEP BY STEP

Social workers are not miracle doctors but in critical situations very often they are appointed to take the role of emergency groups. This makes them experts of deficits and gaps in the social protection systems and they can make proposals for improvements.

Many of us are used to working on "construction sites" and the aim is to provide the overall view, like finishing a puzzle, piece after piece. Each year the Global Agenda is focussing on different aspects and examples of these will be collected and published. Therefore four main themes will be pursued between now and 2016:

- > Promoting social and economic equality (2013)
- > Promoting the dignity and worth of peoples (2014)
- > Working toward environmental sustainability (2015)
- > Strengthening recognition of the importance of human relationships (2016)

WHO, WHERE AND WHAT KIND OF CONTRIBUTIONS ARE BEING COLLECTED?

IFSW and IFSW-Europe asks you, colleagues of social work, to contribute to the observatory and annual report of the Global Agenda with examples from your working field, examples which highlight how and by which actions and measures social and economic equality can be secured.

This can be:

- > Short written reports
- > Posters, Photos
- > Video, DVD, CD, mp3 etc.

Deadline – by end of November

Please include:

Name, address, telephone number, email, and your organisation, network or platform, the theme of

your contribution, how it connects to the main theme (ie the promotion of social and economic equality), partners in cooperation, the participation of clients, the kind of methods and actions taken and , describe the results, what worked well or not so well. What were the obstacles?

Please add the date and sign your contribution. Thank You!

Where to send:

Coordinator for the european region is **Maria Moritz**, Executive member of IFSW-EUROPE and Member at Large for europe in IFSW Global

maria.moritz@chello.at

Esteemed colleagues, we are happy to give you further information, answer your questions, collect your contributions to send them to the editorial team, consisting of representatives of IFSW, IASSW and ICSW.

Your contributions will be published in a book for the next world conference in July 2014 in Melbourne, Australia. This book will constitute the annual report on the Global Agenda Process and will be presented to responsible leaders and organisations worldwide.

I very much welcome all kinds of contributions and I am very keen to learn more about the challenges both you and those you are supporting are currently facing in your daily work and the action you are taking to overcome these.

Further information can be found on the IFSW Website:

ifsw.org/news/launch-of-european-observatory-for-social-work--and-social-development-a-new-outlook-on-social-action-in-europe/

Maria Moritz

Member at Large for Europe

JOINT WORLD CONFERENCE ON SOCIAL WORK, EDUCATION AND SOCIAL DEVELOPMENT

09-12
JULY
2014

MELBOURNE
CONVENTION
AND EXHIBITION
CENTRE,
MELBOURNE
AUSTRALIA

JOINT WORLD CONFERENCE ON
SOCIAL WORK, EDUCATION AND SOCIAL DEVELOPMENT 2014

**PROMOTING SOCIAL AND ECONOMIC EQUALITY:
RESPONSES FROM SOCIAL WORK AND SOCIAL DEVELOPMENT**

www.swsd2014.org

09-12
JULY
2014

MELBOURNE
CONVENTION
AND EXHIBITION
CENTRE,
MELBOURNE
AUSTRALIA

JOINT WORLD CONFERENCE ON
SOCIAL WORK, EDUCATION AND SOCIAL DEVELOPMENT 2014

**PROMOTING SOCIAL AND ECONOMIC EQUALITY:
RESPONSES FROM SOCIAL WORK AND SOCIAL DEVELOPMENT**

KEY DATES

Call for Abstracts Opens	17 May 2013	Full Program Released	17 January 2014
Call for Abstracts Closes	18 October 2013	Early Bird Registration Closes	02 May 2014
Registration Opens	31 October 2013	Conference Dates	09-12 July 2014

AUSTRALIA

FIND OUT MORE AND
REGISTER YOUR INTEREST
www.swsd2014.org

CONFERENCE
OFFICE
WALDRON/INTECH Management
119 Buckhurst Street
South Melbourne VIC 3205 Australia
T +61 3 9645 6311
F +61 3 9645 6302
E swsd2014@wsm.com.au

THE UNIVERSITY OF
MELBOURNE
www.swsd2014.org | swsd2014@wsm.com.au

Please see the latest information on the Joint World Conference on Social Work, Education and Social Development 2014 from 9 to 12 July in Melbourne, Victoria, Australia.

The homepage is open for registration and submitting abstracts.

We encourage all social workers to register their interest via the website www.swsd2014.org

Please share this information with colleagues and help us to promote this important Conference as widely as possible.

Maria Moritz, Executive Member and Member at Large of IFSW Europe is on the programme committee of the Conference and you can contact her for more information to maria.moritz@chello.at

EUROPEAN SOCIAL PLATFORM GENERAL ASSEMBLY 25 APRIL 2013



Ian Johnston and Cristina Martins expressed their appreciation to the European Social Platform's 2013 General Assembly of the strong message conveyed by the Platform to the European Commission and Council about the importance of social services and the impact that cuts in these is having on those citizens who were already most disadvantaged and excluded.

IFSW Europe is a very active member of the Social Platform and is represented at meetings of its Steering Group and Fundamental Rights, Social Policy and Services of General Interest Working Groups by Ian Johnston, Dalė Kabašinskaitė and Liliane Cocozza. The Platform's 2012 Annual Report highlighted efforts to secure the inclusion of a Social Pact in EU economic policies support the creation of quality employment and the development of social services and social enterprises. The Platform also called for greater priority to be accorded

to social justice, active inclusion, poverty eradication, fundamental rights and anti-discrimination in EU policies.

As well as making representations to the European Council, Heads of Member states and other key decision makers about major social policy and legislative developments the Platform has recently published important position papers on Care, Bias Violence, Migration and the Right to Access Banking Facilities.

The Social Platform is a founding member of the Spring Alliance which also includes trade unions (ETUC), environmental NGO's (EEB) and development NGO's (CONCORD). The first Spring Alliance manifesto was published in 2009 and is visually represented as a flower with a core (economy and governance) and five petals: "establish inclusive societies", "promote quality jobs", "assume global responsibility", "preserve and restore ecosystems"

and "improve democracy". The Platform and the other partners are currently updating the manifesto with a view to re-launching it early in 2014.

Full details of the Social Platform's activities are available on their website:
www.socialplatform.org

IFSW Europe is represented by Maria Moritz on the EU Fundamental Rights Platform (FRP). Up to date information about the activities of the Fundamental Rights Agency (FRA) is available at:
<http://fra.europa.eu>

Members wishing regular updates on the activities of the European Social Platform or the Fundamental Rights Agency should visit their websites and sign up for electronic news bulletins.

Ian Johnston is responsible for EU Issues and Coordination of IFSW Europe input to the European Social Platform.



← Ian Johnston and EAPN colleagues from Poland and Malta at the Solidaarsus stone in Tallin.

Participants in EAPN's Workshop in Estonia sculpt the relationship between rich people and those living in poverty. >



COLLABORATING WITH EUROPEAN CIVIL SOCIETY NETWORKS THAT SHARE OUR OVER-RIDING CONCERN TO SECURE THE SAFETY AND WELL-BEING OF OTHERS

Ian Johnston, Executive Member of IFSW Europe reports on the Federation's developing alliances with other campaigning organisations.

IFSW Europe has actively participated in a number of important events focussing on the impact of and alleviation of poverty at European and global level since being admitted to organisational membership of the European Anti-Poverty Network (EAPN) in June 2012.

In May this year I attended a stimulating and provocative joint event in Estonia with representatives from Dignity International and EAPN which prompted IFSW to pledge its support for the global campaign to secure ratification of the Optional Protocol to the International Covenant on Economic, Social and Cultural

Rights (OP-ICESCR).and to launch its own Real Rights Campaign. In June I was able to combine attendance at EAPN's General Assembly in Belgrade with a constructive meeting with Serbia's two Social Work organisations who it is hoped will soon form a coordinating Committee, in conformity with IFSW's constitutional requirement for countries where more than one organisation wishes to be in membership. I was also able to visit the Serbian Parliament and gain a better understanding of the turbulent history this country has faced and the residual challenges that local people and those supporting them continue to grapple with.

My article in the last edition of ESW encouraged IFSW Europe's member organisations to establish links with local EAPN networks in their own countries, where these don't already exist.

I'm pleased to be able to report that Graca Andre from Portugal participated in an EAPN event in Lisbon earlier this year and readers will find detailed feedback from her about her participation in EAPN's Annual Conference in Brussels last month, elsewhere in this edition.

A useful report compiled by EAPN on the EU Country Specific Recommendations (CSR's) and the National Reform Programs (NRP's) can be accessed at the following web link:

www.eapn.eu/en/news-and-publications/publications/eapn-position-papers-and-reports/eapn-publishes-widening-the-gap-2013-marked-the-3rd-round-of-national-reform-programmes-since-the-launch-of-europe-2020-in-2010-eapn-has-engaged-in-this-process-every-year-

MEAN STREETS: A EUROPEAN REPORT ON THE CRIMINALISATION OF HOMELESSNESS IN EUROPE

IFSW Europe Executive Member Ian Johnston reports on a Hearing that took place on 18th September in the European Parliament to launch this important report.

This report focuses on a growing trend across Europe in cities, regions and entire countries such as Hungary to criminalise and penalise homeless people for carrying out life-sustaining activities in public because there is simply nowhere else for them to go.

Some such policies stem from the understandable fears of business owners, residents and politicians that homeless people may pose a threat to the safety and security of other citizens. However for the most part they are founded on ignorance and prejudice, are inhumane and counterproductive and breach fundamental rights.

The report which was compiled by the European Federation of National Organisations working with the Homeless (FEANTSA) and

Housing Rights Watch states that criminalisation strategies often:

- > Make it illegal to sleep, sit or store personal possessions in public places
- > Ban or limit food distribution in public places to curb the congregation of homeless individuals
- > Harass homeless people to force them to move on
- > Selectively enforce public nuisance laws such as loitering and consuming alcohol in public places against homeless people
- > Prohibit the removal of items from rubbish or recycling bins
- > Enforce public health ordinances related to health and hygiene such as those prohibiting urination in public places regardless of the availability of public toilet and bathing facilities

I suggested to the Parliamentary Hearing which was hosted by Sylvie Guillaume MEP that the widespread failure of local authorities to provide toilet and bathing facilities even in wealthier countries like the UK

not only breaches the fundamental rights of homeless people but paradoxically also effectively imprisons older people and other citizens, who may have an urgent requirement for a toilet, in their own homes.

I was also able to express our concern as social workers about the link between poverty and other social disadvantage and homelessness and the proportion of homeless persons who have significant underlying health or other problems and the number who are extremely vulnerable. I would urge all colleagues to support FEANTSA and other campaigning organisations to successfully reverse this potentially very damaging trend which adversely affects the well-being of some of the members of society most in need of unconditional support.

An executive summary of the report can be found at the following web link:

www.feantsa.org/spip.php?article1990&lang=en

TRAINING FOR SOCIAL SERVICE PROVIDERS WORKING WITH THE SUFFERERS OF RARE DISEASES



IFSW Europe were represented by Ian Johnston, Executive Member at a workshop to develop this important guidance held in Copenhagen on 10th & 11th October 2013.

The workshop was organised by **EUORDIS**, a non-governmental patient-driven alliance of patient organisations and individuals active in the field of rare diseases, dedicated to improving the quality of life of all people living with rare diseases in Europe and EUCERD, the EU Committee of Experts on Rare Diseases.

A disease is defined as rare in the European Union (EU) when it affects no more than 5 in 10,000 people. It is estimated that between 5,000 and 8,000 distinct rare diseases exist today, affecting between 6 % and 8 % of the population in the course of their lives. Although each rare disease is individually characterised by low prevalence, the total number of people in the EU who are or will at some point be affected by a

rare disease is between 27 and 36 million. Social services and social policies represent important resources to improve the quality of life of these millions of people. Entirely appropriately the workshop was held at what is probably the world's most accessible office building, the House of Disabled People's Organisations, where users are encouraged to think differently across professional competency and come together naturally, cutting across organisational and other divisions. It was attended by 20 experts, from 11 different countries, representing the various stakeholder groups: EUCERD, Training Services Providers, Specialised Social Services, National Authorities, National Alliances, Help Lines for RD, field social workers and academia.

The workshop started from a more generalised contextual approach before narrowing down to the specifics of the 'Training Principles for Social Services Providers'. A draft document, com-

pleted and circulated to workshop participants for comment in advance, formed the basis of group discussions. Participants examined the contents in depth, suggested amendments to the training proposed and considered how the final version of the document can best be distributed to ensure it achieves its purpose.

The main contribution I made was to suggest that, even more so than when dealing with more common illnesses, the sufferer will be the expert and should be regarded as such and if they wish this, should own and control all treatment and other processes. A user perspective must inform training and information requirements and these should actively promote the concepts of self-directed care and empowerment.

Readers wishing additional information on this project can access it at the following link to the EUORDIS web site:

www.eurordis.org/who-we-are

IFSW EUROPE JOINS FORCES WITH THE EUROPEAN FEDERATION OF NURSES

IFSW Europe Executive Member, Ian Johnston, reports on an exciting new project aimed at unleashing the potential of Information Communication Technology (ICT) to more effectively support people with complex requirements to live as independently as possible.

Representatives of IFSW Europe's member organisations present at the 2013 Delegates Meeting in Istanbul will already be aware of this new collaborative project led by the European Federation of Nurses (EFN) which unites 25 European organisations, representing civil society, academia, health and social care professionals, researchers, regulators, trade unions and industry in a bid for funding to collaboratively address societal challenges.

Of particular concern is the ageing population and accompanying increase in the numbers of people living with long-term conditions and non-communicable and chronic diseases in many parts of Europe. If funding is secured the project will unite health and social care practitioners in a common endeavour to promote healthy lifestyles and well-being and make Europe's health and social care systems more sustainable and of better quality.

Whilst some concerns were expressed over the possibly dominance of a medical rather than a social model of care most social workers acknowledge the urgent need to develop more effective joint social and healthcare

services and to replace institutional service models with those that prevent illness and disability occurring in the first place and when they do promote self-directed care and interdependence, realising the benefits of telecare, Ehealth and other technological developments.

EFN served on the Steering Committee of the European Innovation Partnership on Active and Healthy Ageing and laid the political foundations and priorities for a Strategic Implementation Plan to assist Member States to strengthen the necessary links between health and social care and is therefore well placed to lead this new consortium. The right of all European citizens to freedom of movement and equitable access to integrated health and social care systems of a consistent quality is an important element of the project.

However the main objective is the development of evidence based guidelines for eHealth services in nursing and social care, building on existing good practices amongst project partners and sharing knowledge across European regions. The ultimate goal is the establishment of a sustainable mechanism to support nursing and social care research in the field of ICT enabled integrated care through evaluation and consensus building. An initial set of guidelines with a focus on healthy lifestyles and prevention, early intervention and clinical practice in integrated care will be developed.

Such guidance will facilitate skills development for advanced roles such as those concerned with the protection of children and vulnerable adults and care management and ePrescribing in nursing and social care and ensure their

dissemination to end users and public policy designers, based on evidence collected by the European Nursing Research Foundation (ENRF) and the European Social Work Observatory (ESWO) that IFSW is developing in conjunction with the Global agenda for Social Work.

If funding is secured the project will initially run for 2 years and will commence in January.

TIMEBANK

At the IFSW Europe Delegates Meeting in April 2013 it was decided to collaborate with members of the British Association of Social Workers (BASW) International Committee to take forward their proposal to set up a Time Bank for members of IFSW Europe.

Time Banking is an innovative form of reciprocal exchange based on mutual support which has proved highly effective in promoting active citizenship, the growth of social capital and community empowerment. Time Banks build on strengths, both individual and organisational, and recognise that everyone belonging to an identifiable community, in our case the international social work community, has something to offer.

Time Banks value all kinds of reciprocal help and skills people can offer each other. There is no exchange of money – the fundamental concept is that everyone's *time* is valued equally: one hour = 1 time credit. Members 'deposit' their time by giving their skills and expertise to others and can 'withdraw' their time credit when they need something for themselves.

Time Banking recognises people and organisations as assets, promotes reciprocity and builds trust and mutual respect between members.

IFSW member organisations with

skills and knowledge to offer can choose to join the Time Bank and indicate what resources (a knowledge and skills exchange rather than a financial exchange) they can offer to other members.

If a scheme is set up it may be necessary to appoint a co-ordinator to manage the database of membership and reciprocal exchange activity.

BASW has undertaken to try and identify resources to:

- > recruit a co-ordinator, or include the co-ordination role within an existing or proposed administrative post
- > set up administrative systems to broker and record exchanges between members
- > monitor and evaluate activity with a view to potentially extending the scheme to members world-wide

BASW has also offered to do some of the development work which may include:

- > Advice on setting up member organisations
- > Organisational development and capacity-building
- > Workforce development - Training packages / courses
- > Video-conferenced joint seminars on specific interest areas
- > Password protected access to the BASW Knowledge Hub
- > Mentorship for newly emerging member organisations.

A very short questionnaire was sent to members as the first step to gathering information to be used to set up the Time Bank and to find out:

- > The level of interest from each European member association,
- > Ideas about what each association could put in to the Time Bank (bank credits) which will be in units of one hour e.g. translation and interpretation (in proper social work language) might be useful to help with IFSW Europe's own infrastructure needs and also in terms of individual professional requirements.
- > Ideas about what each country would like to use the Time Bank for (bank debits).
- > Views on a system to broker exchanges and how each would see it working

If you have not already done so please complete the questionnaire and send it back to **Fran McDonnell** at f.mcdonnell@basw.co.uk as soon as possible.

Looking forward to receiving your responses.

Ian Johnston is the link person of the executive in this area.

**PROJECT:
"ECONOMIC CRISIS
IN EUROPE
-CHALLENGE AND
RESPONSE OF SOCIAL
WORK PROFESSION"**

IFSW Europe is working on the Project "Economic Crisis in Europe- Challenge and Response of Social Work Profession"

The main aims of the project are:

- a) To gather data about the "response" of social workers/social work to the crisis at national levels;
- b) To discuss the possible role of European and international social work networks - advocacy, empowerment and lobbying;
- c) To discuss and develop a working plan to tackle the effects of the crisis on social work services and those requiring our support

In the first part of the Project, a questionnaire has been distributed by IFSW Europe in order to collect data from our member organisations.

For the second part of the Project there will be a workshop in Lisbon.

Venue and dates for the workshop

The Portuguese Association of Social Workers (APSS) will host the workshop on December, 6-7 in Lisbon at Universidade Católica Portuguesa (Portuguese Catholic University of Lisbon)- Faculdade de Ciências Humanas / Departamento de Serviço Social (Human Sciences Faculty / Social Work School), LISBON, Portugal
www.ucp.pt



**DRAFT AGENDA FOR DECEMBER
WORKSHOP IN LISBON/PORTUGAL**

**Friday, 6 December
10.00- 17.00**

- 1) Welcome and formalities by the Portuguese Association of Social Workers and IFSW Europe e.V.
- 2) Formalities- Roll call of participants- name, national organisation and professional role
- 3) Introduction to the project idea - trends and themes that identified the project "Economic Crisis in Europe- Challenge and Response of Social Work Profession"

Coffee Break: 11.00-11.30

- 4) Highlights from each country present (Brief introduction – 10 minutes from each country focusing on the existing national situation regarding socio-economic effects on crisis)

Lunch: 12.30-14.00

- 5) Horizontal thematic trends and recommendations (The following themes are discussed, involving all participants and national perspectives. Approximately 35 minutes for each theme. Evidence presented on each theme should be summarised and recommended action highlighted)

- a) Have you experienced cuts in health and social care funding

and social protection benefits as a result of economic crisis? (Increasing poverty and unemployment, cuts in social services budgets etc...)

- b) Has your government implemented special programs and are social workers engaged in these? Please give examples from your country.

- c) Have you recognized any negative effects of economic crisis on human rights situation in your countries?

- d) Please describe the responses of social work to the crisis in your country and the stance and any action your association has taken.

Saturday, 7 December

10.00 – 13:00

- e) Combating the effects of the crisis – work plan for IFSW-Europe. What are the roles of IFSW Europe in order to combat the effects of economic crisis?

Coffee Break: 11.00-11.30

- f) What could / should IFSW-Europe do additionally to support your national situation?

Closing session

IFSW Europe is looking forward to promote an intense debate with our members in Lisbon, Portugal.

Hakan Acar

Executive member of IFSW Europe e.V.



ANNOUNCEMENT OF IFSW EUROPEAN CONFERENCE 2015

IFSW Europe e.V. has sent out a call for expressions of interest from member organisations willing to host the 2015 IFSW European Conference and we are very pleased to announce **The British Association of Social Workers, United Kingdom**, submitted a proposal to host the Conference 2015 in **Edinburgh, Capital City of Scotland** and this has been very well received by Executive Members of IFSW Europe.

The aim of the Conference is to bring together the fields of social work intervention and professional practice, policy making and research and to provide an opportunity for social workers to share their experiences, common problems and focus on strategies at European level.

Organising committees for the Conference are being formed and a joint planning meeting will take place in Edinburgh to visit the venue and progress matters. The executive is planning to combine this meeting with the annual executive meeting prior to the Delegates Meeting, in the beginning of 2014.

We congratulate BASW for their successful application and express our appreciation of their greatly valued contribution to IFSW Europe's work.

We will send information on the theme, venue and exact dates as soon as possible.

Looking forward to welcoming all social workers in Edinburgh in 2015.

ROLE AND IDENTITY PROJECT – WORK IN PROGRESS

Dear Members,

I welcome this opportunity to share this update on IFSW Europe's Role and Identity Project with readers of ESW. Membership of the Working Group on this issue was extended at the Delegates Meeting held in Istanbul, Turkey, 2013 and the group now comprises of representatives from Georgia, Germany, UK, Portugal, Denmark, Armenia, Lithuania and Azerbaijan. The group is facilitated by the Executive Member, Salome Namicheishvili.

The group has agreed to develop new questions around the following areas: a) working conditions of social workers and b) scope of social work practice. The plan is to collect a snapshot of data around these areas from all member organisations, analyse the response and build up a profile of our membership that can be presented to the next delegates meeting. These new questionnaires are in process of development and will be distributed soon. Meanwhile the IFSW Europe Executive reminds those countries who have yet to complete the initial round of questionnaires (core questionnaire and thematic questionnaires on social work education and social work law regulation and standards) that these are urgently required to enable this important task to be progressed. Completed questionnaires and any questions related to these should be addressed to me at the following email address: salome.n@gasw.org

Thank you in advance for your cooperation!

Salome Namicheishvili
IFSW Europe
Executive Committee Member

THE REVIEW OF MEMBERSHIP IN IFSW

In accordance with the work programme for 2013-2014, approved at the Delegates Meeting in Istanbul, IFSW Europe is carrying out this review of membership with a view to presenting clear proposals for membership development to member organisations for discussion at next Delegates Meeting in Madrid Spain 2014 and the IFSW General Meeting in Melbourne.

Salome Namicheishvili is taking the lead in this area with the support of Cristina Martins, who is also working on the review of the questionnaire for members at the global level with Morel Caissie from the North America Region.

IFSW Europe has been very active in networking with countries with no members and re-establishing relations with former members (including Greece, Albania, Serbia, Poland and the Netherlands)

We hope to be able to update you soon with more news on these important developments.

IFSW Europe e.V. | CONNECTING MEMBERS PROJECT

IFSW Europe e.V., 21st October 2012

This project aims to:

- > Help to improve communication with members
- > Encourage member organisations to become more involved in the work of IFSW
- > Support exchange between members
- > Encourage new members

COUNTRIES OF EUROPE / EXECUTIVE LINK PERSON

CRISTINA MARTINS	MARIA MORITZ	IAN JOHSTON
Andorra	Austria	Bulgaria
Belgium	Bosnia and Herzgovina	Estonia
France	Czech Republic	Finland
Italy	Hungary	Iceland
Malta	Kosovo	Ireland
Monaco	Romania	Norway
Portugal	Slovakia	Poland
Spain	Slovenia	Serbia
		UK

GABRIELE STARK- ANGERMEIER	HAKAN ACAR	SALOME NAMICHEISHVILI
Denmark	Albania	Armenia
Faeroe Islands	Croatia	Azerbaijan
Germany	Cyprus	Belarus
Luxembourg	Greece	Georgia
Moldova	Israel	Latvia
Montenegro	Macedonia	Lithuania
Netherlands	San Marino	Russia
Sweden	Turkey	Ukraine
Switzerland		

3.

PARTICIPATIONS IN CONFERENCES



**SOCIAL WORKERS FROM
POST-SOVIET COUNTRIES
MET IN TURKEY**

Social workers from post-soviet countries located in Europe and Asia, met at the conference "Bridge of Social Work: From East to West" which took place in Antalya, Turkey. The conference was organized by Azerbaijan Social Work Public Union, Antalya Metropolitan Municipality and Antalya Branch of Turkish Association of Social Workers in August 22-23, 2013.



Eight post-Soviet countries such as Tajikistan, Kyrgyzstan, Uzbekistan, Russia, Ukraine, Moldova, Georgia and Azerbaijan came together at the conference in Turkey which is the bridge from Asia to Europe. The conference was an avenue for all Post-Soviet countries to meet and know each other. Some post-Soviet countries which are members of IFSW but belong either to IFSW Europe or IFSW Asia and they could not meet each other during the meetings IFSW. In addition, there are some post-soviet countries which are not members of IFSW and they never participate at IFSW related events. Therefore, the conference in Antalya was a chance for all these countries to come together. It provided an opportunity for

them to meet, share experiences, discuss their models of social work practice as well as their achievements, challenges and issues in establishment of social work after the collapse of the Soviet Union.

The conference was opened with welcoming speeches of Mr. Mustafa Akaydin, the Head of Antalya Metropolitan Municipality and by Mr. Murat Altuggil, Head of Turkish Association of Social Workers. Key note speeches were delivered to conference participants by Ms. Aytakin Husyenli, Executive Director of Azerbaijan Social Work Public Union and Deputy of Executive Committee of IFSW Europe and by Mr. Riza Elitok, Head of Antalya Branch of

Turkish Association of Social Workers.

During the conference participants representing professional social work associations, universities, government agencies and non-government agencies made presentations about the history, current trends, challenges and future plans of social work in their countries. Mrs. Salome Namicheishvili, Chair of Georgian Association of Social Workers and Executive Committee Member of IFSW Europe conducted a session on "Social Work Ethics" where she highlighted the importance of this kind of meeting and carried on with ethics in practice of social work in these countries.

At the end of official part, Ms. Huseynli and Mr. Elitok, carried out a session on the outcomes of the conference. The participants mentioned that this kind of meeting of Post-Soviet countries needs to be continued in the next years since there are a lot of the common in development of social work of these countries. Meanwhile, participants expressed that since all participant countries come from the same background, Soviet background and also having almost the same speed of development of social work, there are many things to learn from each other at these kinds of meetings.

At the end of the conference, participants were given certificates of participation and gifts by Antalya Metropolitan Municipality. The conference expenses such as accommodation, food and all expenses for social activities were financed by Antalya Metropolitan Municipality.

Aytakin Huseynli,
Executive Director of Azerbaijan
Social Work Public Union

Deputy of Executive Committee of
IFSW Europe



BUILDING BRIDGES

IFSW Europe's President Cristina Martins reports on a highly successful conference in Uruguay

At the invitation of the Association of Social Workers of Uruguay I was privileged to participate in the Latin America & Caribe Conference / III Encuentro de la Región América Latina y Caribe, y de la XXXI Reunión del Comité Mercosur de Organizaciones Profesionales de Trabajo Social, in Montevideo, Uruguay from 28th May to 1st June 2013.

I had an opportunity to contribute to the opening session and in my speech I was very pleased to highlight the strong influence social workers from Europe get from our Latin American colleagues regarding the ethical political approach in dealing with social problems and congratulated them for their great activism in engaging with Human Rights campaigns.

I also delivered a keynote address to a session on the Definition of Social Work / *Definición Mundial del Trabajo Social: aportes y perspectivas desde América Latina y Caribe*. My presentation on the work of IFSW Europe was delivered to all participants and had a special focus on the Definition, including recent decisions taken by the Delegates Meeting concerning this subject.

Following a detailed update of the history of the Definition of Social Work and the rationale for the recent proposal to review its terms, a very intense debate led to a commitment to an ongoing exchange of views between our



Regions, Europe and Latin America & Caribe, on the action necessary to secure a definition that adequately reflects the values, practice and aspirations of social workers in all parts of the world.

I was delighted to be able to attend the General Assembly of delegates from the region. This was a great and diverse experience very different from European delegates meetings.

The fact that I understand and speak spanish ensured that this was a thoroughly rewarding experience that contributed to a grow-

ing understanding of our diverse cultures and social work models and a desire to build bridges between our respective Regions.

My sincere thanks to the Association of Social Workers of Uruguay and to all Colleagues from Latin America & Caribe for an unforgettable experience.

Special thanks too to Rodolfo Martinez and Laura Acotto for their warm welcome.

Cristina Martins
President of IFSW Europe e. V.

4.

INTERVIEW

Aytakin Huseynli



INTERVIEW WITH THE NEW MEMBER, AYTAKIN HUSEYNLI, PRESIDENT OF AZERBAIJAN PUBLIC UNION OF SOCIAL WORKERS-TURKEY, DELEGATES MEETING, 2013

What is your first experience like with IFSW, Europe delegates meeting?

My impression for the first time being at the IFSW Europe delegates meeting is positive. I liked the warm welcoming by the president, Executive Committee members and participants as well. The second reason for me to be positive about it is that it gave me an opportunity to share my experience about Azerbaijan as well. I found it very useful in a way that I had a chance to have deep discussions about social work with social workers from different countries during the formal and informal gatherings. Being for the

first time at the delegates meeting, it was hard in the beginning to follow the discussions and the way discussions are held but later on I found my way around them. It is a very positive and encouraging feeling to be part of this kind of a huge social work community. It personally empowers me a lot to do more contributions for development of social work in my country and other parts of the world.

How do you think that IFSW Europe will support social work development in your own country?

I think IFSW Europe can help development of social work in our country by giving us technical support such as providing documents, specialists and by conducting events in Azerbaijan. Due to natural energy resources, most fields including social protection and social development field do

not get much attention and proper intervention, which affects negatively vulnerable people. Therefore, having many international activities on social work and social protection in Azerbaijan can play a big role that these fields would get more attention for development.

In addition, another big support of IFSW Europe could be that I can help us to raise awareness about social work and social protection issues in Azerbaijan among global social work community. In Azerbaijan we do not have much chance to do it due to current social-political context. In this regard the IFSW Europe can help us to raise issues and get support on international level.

Salome Namicheishvili
Georgian Association of Social Workers (GASW), Chairperson
IFSW Europe, e.V. Executive

5. NEWS

HISTORY OF SOCIAL WORK INITIATIVE

Jan Steyaert (www.steyaert.org/jan) has shared with us this important information.

For some time now, people have

been developing a website on the history of social work.

It can be seen at www.historyofsocialwork.org

Gradually, it becomes known and visitor numbers increase. See the flyer to further promote

the history of social work initiative.

Please share this flyer within your network, with your colleagues, your students and your social work friends.

Help to promote this free information resource.



History of social work

www.historyofsocialwork.org



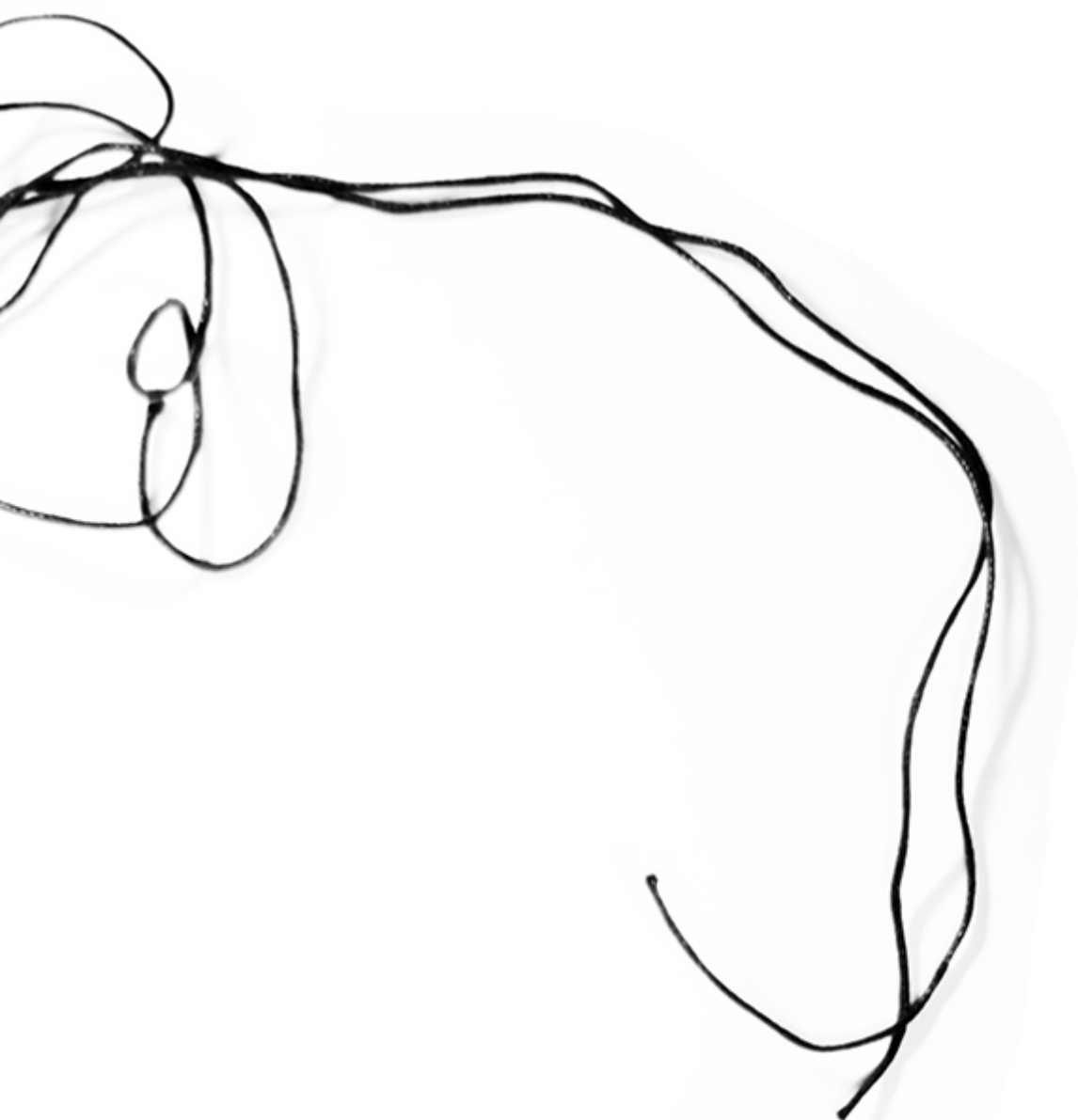
**Everything you ever
wanted to know about
the history of social work,
but were afraid to ask!**

What has the current 5€ note to do with social work history?
Who was Mary Richmond again?
What does George Orwell have to do with social work?
What's the historical link between chocolate and social work?
What was Saul Alinsky's contribution to social work?
.... and much more ...

@ www.historyofsocialwork.org

**And like facebook, this is free,
and always will be free.**

6. HUMAN RIGHTS REPRESENTATIVE REPORTS



VISIT TO INTERNATIONAL CRIMINAL COURT - DEN HAAG

This information was supported also on documentation provided by ICC secretariat.

Last September Graça André as lecturer of Catholic University of Lisbon has participated in a Erasmus Teachers Agreement in Saxion University (Enschede – Netherlands) to develop some lectures under the topic Social Work and Human Rights. Since this topic was a common interest, Cornelia Niehoff lecturer at Saxion University at Social Work Bachelor, supported by Hans Walz from Weingarten Hochschule – Ravensburg (Germany) has organized a visit on 19 Set, to the International Criminal Court (Den Haag). This visit was understood as a “must” after our IFSW EU workshop in Istanbul Conference “Human Rights Theory and Practice for Social Workers”, considering its findings and messages. Also to Cornelia Niehoff and Hans Walz that had developed at that conference a collective WS with students, under the title “Human Rights in Social Work Education: Student and Educator perspectives” such visit would be an opportune contribution to their professional researches as Academic Educators of Social Workers.

At International Criminal Court it was possible to participate at a session in the court of law. It was the trial of William Samoei Ruto (Current Vice-President of the Republic of Kenya) and Joshua Arap Sang (the head of operations at Kass FM in Nairobi, the Republic of Kenya). Mr. Ruto was accused

of being criminally responsible as an indirect co-perpetrator pursuant to article 25 (3) 8a) of the Rome Statute for the crimes against humanity of: murder; deportation or forcible transfer of population and persecution. Mr. Sang was accused of having otherwise contributed (within the meaning of article 25 (3) (d) of the Rome Statute to the Commission of the following crimes against humanity: murder; deportation or forcible transfer of population; persecution. Those alleged crimes happened immediately after the announcement of the results of the presidential election and specifically from 30 Dec. 2007 until Jan. 2008, and an attack was carried out- following a unified, concerted and pre- determined strategy – by different groups of Kalenjin people.

The International Criminal court (ICC) is an independent permanent court based in Den Haag that tries persons accused of the most serious crimes of international concern namely genocide, crimes against humanity, war crimes and the crime of aggression. The ICC was founded and is governed by the Rome Statute and is the 1st permanent treaty- based, international criminal court supported by 122 State Parties. In all of its activities, the ICC observes the highest standards of fairness and due process and is designed to help end impunity for the perpetrators of the most serious crimes of concern to the international community.

For the trial session we could understand the complexity of the case and the high competences asked to the Trial Chamber; Office of the Prosecutor and Defense Counsels. The confirmation of the

charges hearing was held from 1 to 8 September 2011 and ICC trial Chamber was scheduled to start on 10 Sept.2013. In this case there are 628 victims that were participating in the proceedings which are represented at the court by a legal representative.

We have been informed it was the 1st time that a current government goes in the trial, what means the importance of ICC statute. Also recently we have been informed by the media that there are international movements led by certain countries that does not respect human rights and are interested to influence other countries to Roma Statute disaffiliation.

Our participation at this visit was a way to realize the importance of some international institutions as ICC in view Human Rights realization and less powerful people's protection. Also how much such organizations must be known, divulged in their tasks specifically at educational institutions (new generations) and supported on a wider and well informed public opinion.

Graça Maria André

IFSW Europe e.V.

European contact person for the Global Human Rights Commission
gandre@net.sapo.pt

FIGHTING FOR A SOCIAL EUROPE FREE OF POVERTY

EUROPEAN ANTIPOVERTY NETWORK (EAPN)
ANNUAL MEETING
BRUSSELS 30/09 - 01/10/2013

On 30th September and 1st October, Graça André, represented IFSW Europe at the annual meeting of EAPN. IFSW-Europe is an organisational member of EAPN. The meeting took place over two days and addressed specific topics under the above general theme.

An internal EAPN meeting took place on the first morning to plan an Election Campaign for the European Parliament Elections 2014, (22-25 May) under the theme: "Electing Champions for a Social Europe, free of poverty, social exclusion and inequalities". According to EAPN every vote counts. As a consequence of growing levels of poverty, inequality and xenophobia fuelled by the dominance in the EU and Member States of policies of competitiveness and austerity, instead of cohesion and redistribution, democracy is already in a fragile state. EAPN asserts that democratically elected representatives are an important part of the solution and calls on people to make their vote count in the European Parliament Elections. Convinced that poverty is not inevitable and can be eradicated in the EU and globally EAPN and its partner organisations have put forward 3 proposals for a more Social Europe with greater participation (i) a Social Pact (ii) an effective EU Strategy to fight Poverty, Social Exclusion and discrimination; and (iii) strength-

ened democracy and civil society participation. EAPN's Manifesto and Pledge were presented to a plenary discussion which encouraged participants to develop new strategies at their national organizations as citizens and agents in the social field of poverty experience. EAPN's new Director, Barbara Helfferich has introduced proposals for an EAPN Election Campaign and follow up at National level.

The sessions were led by the EAPN President Sergio Aires and the Vice - President Letizia Sforza.

A seminar under the theme "What a progress on poverty and participation?" was held on the afternoon of the first day. This seminar was aimed primarily at EAPN members to update and engage them in EAPN policy work and included a panel where it was possible to have an exchange of views with representatives of EU institutions. In the first part 4 parallel workshops with EAPN Bulgaria, Poland, Cyprus and AGE Platform as presenters took place. The specific aims of these sessions were: (i) to promote mutual learning and help build capacity for people with direct experience of poverty and their NGOs, and other stakeholders, emphasizing their role in stakeholder processes linked to the European Semester and Europe 2020; (ii) to present EAPN's New 2013 Assessment of

National Reform Programms (NRPs) and key messages, based on national and European Organization member's contributions and (iii) to promote an active dialogue between EU decision makers and key stakeholders on the way forward: to ensure that Europe 2020 makes concrete progress on poverty and participation.

In the second part the main findings, including messages from workshops built from a larger debate with each WS group and from several organization / national experiences of poverty were presented. A Plenary debate in a round table with Decision Makers and Stakeholders was then held with representatives from: Social Exclusion Strategy Unit, Director General Employment, Social Affairs and Inclusion (Head of Social Protection); Social Protection Committee (Chair); European Parliament (The Green); European Trade Union Confederation (Confederation Secretary); Social Platform (President). The speakers explained their main tasks at those organizations and how these relate to EU policies and (more or less) expressed support for EAPN's proposals to secure a Social Europe free of Poverty.

The sessions were led by EAPN Vice- President Peter Kelly and EAPN Director Barbara Helfferich.

The conference entitled :“Electing Champions for a Social Europe-European Parliament Elections 2014” commenced on the second morning. From between 22 and 25 of May 2014 European citizens will vote to elect the representatives of the European Parliament, EAPN aims to: (i) ensure that election debates are addressing the impact of current EU policies and actions on access to social rights; (ii) ensure that social issues, including the fight against poverty, inequality and discrimination are part of the debates at European and national levels in the context of the European Parliament Elections 2014; (iii) influence the content of the election manifestos of the political parties and the commitments they will make as part of their election campaigns; (iv) strengthen alliances with other stakeholders; (v) generate momentum for an EAPN campaign on the European Elections.

The first conference session was themed “Civil Society and the European Parliament Elections 2014” with the presentation of actions and demands in relation to European Elections from: CONCORD (European NGO Confederation for relief and development (President); AGE Platform Europe (Managing Director); Social Platform (Vice-President); European Women’s Lobby (Policy Officer).

The 2nd part was under the theme “For a more Social and Democratic Europe driven by participation – Election commitments of Political Parties ”EAPN has presented concrete proposals for European Elections. EAPN Norway was invited to share with the plenary the messages from the 12th European Congress of People Experiencing Poverty. The following invited representatives

European Political Parties have introduced their election commitments: European People’s Party; Party of European Socialists; European Green Party and European Left.

The session was closed with conclusions from an EAPN perspective and a commitment to spell out the next steps in a further publication.

These sessions were led by EAPN’s President and Vice – President.

This annual EAPN meeting attracted about 150 participants the speakers and their agents, chairs, guests, EAPN national network members; European Organizations in membership of EAPN (including IFSW – Europe). The debates were highly participatory with many pertinent questions. The questions put to the speakers demonstrated just how much participants in the plenary are engaged with their organizations aims as well as informed about users basic needs. They are demanding urgent changes to European policies and intervention to halt the current increase in the rates of people living in poverty. Also they demonstrated in depth knowledge of the various contexts poverty arises in. They have been very assertive to the European Political Parties representatives about their political role, pressing them to be more effective in their engagement with the European 2020 poverty targets and other commitments. Participants acknowledged the importance of wider citizen participation and the necessity to develop a better information system about users rights and how to access them, e.g. to support them to vote.

At this meeting it was possible to share information about the IFSW

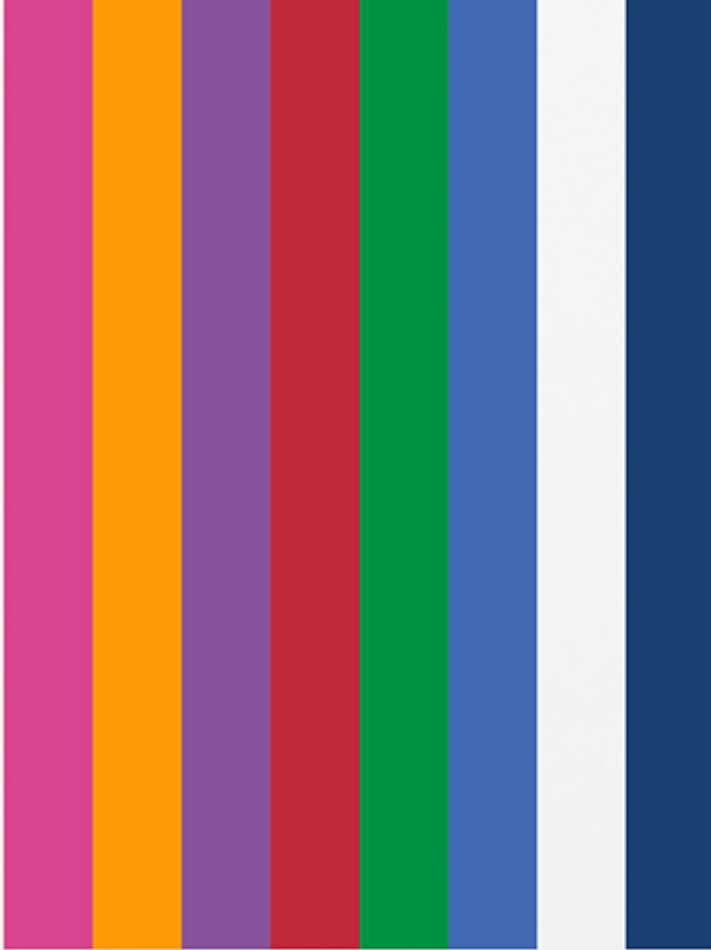
– Europe work programme with other participants in plenary. I was also able to mention the aims of our project on the “Challenges arising from the Economic Crisis in Europe: the Response of the Social Work Profession” as well as the workshop, in December in Lisbon, to plan and debate new strategies to enable Social Workers to contribute more effectively to the campaign opposing the austerity measures introduced in response to the Economic Crisis in Europe, which are the main cause of the current increase in poverty in Europe.

Having established close links at European level IFSW – Europe and EAPN now need to develop alliances and closer working relationships between our respective members in their own member states in a coordinated European strategy.

Graça Maria André

IFSW Europe e.V.

European contact person for the Global Human Rights Commission
gandre@net.sapo.pt



EDITOR'S NOTE

It has been very exciting to work for this newsletter with the help of Maria Mónica, our professional designer. The IFSW Europe Executive Committee is very happy with the work she has been developing so far enhancing our key documents with a design that inspires and motivates us a lot.

I hope you share these sentiments when reading or just looking at the new European Social Worker newsletter. Please send contributions for the next issue which is planned for next year and keep us up to date with all your news stories and events so we can post them immediately on IFSW Europe's facebook pages and blog for wider dissemination.

Please send your news or comments to IFSW Europe at:
martinscristina25@hotmail.com

Thanks!

Cristina Martins
President of IFSW Europe e.V.



INTERNATIONAL FEDERATION OF SOCIAL WORKERS
FÉDÉRATION INTERNATIONALE DES ASSISTANTS SOCIAUX
FEDERACIÓN INTERNACIONAL DE TRABAJADORES SOCIALES